

Guide to Retirement Villages in the UK

April 2020



A guide to 150 housing developments designed for older people and described by their developers / managers as Retirement Villages.



Researched, compiled and produced by the charity Elderly Accommodation Counsel (EAC).

Aberdeenshire

Aberdeenshire

BANCHORY

INCHMARLO RETIREMENT VILLAGE

Inchmarlo House, Inchmarlo, Banchory, Aberdeenshire, AB31 4AL



190 flats, bungalows, cottages. Built in 1986. Sizes 1 bedroom, 2 bedroom, 3 bedroom. Includes mobility and wheelchair standard properties.

Facilities..... Lounge, Dining room, Restaurant open to the public, Garden, Hobby room, Activities room

Services..... Independent Living scheme with on-site care staff (24 hours / 7 days), Visiting management staff (Based at Inchmarlo House Care Home but available on call for homeowners on the estate), Non-resident management staff and Careline alarm service

Accessibility.... Access to site easy, but less so for less mobile people. Distances: bus stop 20 yards; shop 2 mile(s); post office 2 mile(s); town centre 2 mile(s); GP 2 mile(s).

Lifestyle..... Regular social activities include: exercise, arts & crafts, cards, games, trips, dinners, concerts, coffee mornings. Meal(s) available (Meals may be ordered in the bar / restaurant or delivered). New residents accepted from 55 years of age. Both cats &

Tenure(s)..... Tenure(s): Freehold

Manager..... Inchmarlo Retirement Village, Tel: 01330 824 981

Manager's notes: Inchmarlo Retirement Village was established in 1986 near Banchory on Royal Deeside in Aberdeenshire. At the heart of the 100 estate is Inchmarlo House, a Georgian listed mansion house, which is now a 52 bed luxury care home. There are also around 200 hom

Aberdeenshire

Aberdeenshire

CHAPELTON

BRIO LANDALE COURT

Chapelton, Stonehaven, Aberdeenshire, AB39 8BF



94 flats, cottages. Built in 2019. Sizes 1 bedroom, 2 bedroom.

Facilities..... Lift, Lounge, Restaurant open to the public, Guest facilities, Garden, Community centre, Hobby room, fitness suite, parking facilities

Services..... Retirement Housing scheme with on-site care staff (24 hours / 7 days), Non-resident management staff (24 hours, 7 days) and Careline alarm service

Accessibility....

Lifestyle..... Meal(s) available. New residents accepted from 55 years of age. Both cats & dogs generally accepted.

Tenure(s)..... Tenure(s): Ownership and Rent (market) and Shared Ownership (OPSO)

Manager..... Brio Retirement Living, Tel: 01224 042 647

Manager's notes: A unique, age-exclusive community in Chapelton, situated on a beautiful stretch of the Aberdeenshire coastline.

Landale Court homeowners have access to a host of luxury living community facilities and communal areas, all set in beautifully landscaped

Bedfordshire

Bedford

WIXAMS

WIXAMS RETIREMENT VILLAGE
Bedford Road, Wixams, Bedford,
Bedfordshire, MK42 6EA



230 flats. Built in 2019. Sizes 1 bedroom, 2 bedroom.

Facilities..... Lift, Lounge, Restaurant open to the public, Laundry, Guest facilities, Garden, Hobby room, Activities room

Services..... Extra Care scheme with on-site care staff (24 hours / 7 days), Non-resident management staff (7 days) and Careline alarm service

Accessibility....

Lifestyle..... Meal(s) available. New residents accepted from 55 years of age.

Tenure(s)..... Tenure(s): Shared Ownership and Leasehold and Rent (social landlord)

Manager..... The ExtraCare Charitable Trust, Tel: 02476 506 011

Manager's notes: Located just three miles from Bedford Town Centre, Wixams Retirement Village provides community living for over 55's in a beautiful parkland setting. This superb development of 230 spacious one and two bedroom apartments with a full range of communal, soc

Berkshire

West Berkshire

KINTBURY

AUDLEY INGLEWOOD
Templeton Road, Kintbury,
Hungerford, Berkshire, RG17
9SW



91 flats, cottages. Built in 2011. Sizes 1 bedroom, 2 bedroom.

Facilities..... Lift, Lounge, Dining room, Restaurant open to the public, Guest facilities, Garden, Hobby room, Activities room, Cafe, Hairdressing salon, Swimming pool, Bar/pub, Library, Assisted bathing facility

Services..... Retirement Living scheme with on-site care staff (24 hours / 7 days), Non-resident management staff (24 hours, 7 days) and Careline alarm service

Accessibility.... Whole site accessible by wheelchair. Access to site easy. Distances: bus stop 1 mile(s); shop 1 mile(s); post office 1 mile(s); town centre 3 mile(s); GP 1 mile(s); social centre 3 mile(s).

Lifestyle..... Regular social activities include: Dinners, film night, and quiz night, organised by Village Manager. Meal(s) available. New residents accepted from 55 years of age. Both cats & dogs generally accepted (Pets must be well-behaved).

Tenure(s)..... Tenure(s): Leasehold

Manager..... Audley Villages, Tel: 01488 208 008

Manager's notes: Inglewood is surrounded by its own 39-acre estate in the friendly village of Kintbury. This former luxury health spa with landscaped gardens is home to 9 cottages and 82 apartments, offering a rural idyll that also has convenient motorway and mainline rail

Windsor and Maidenhead

SUNNINGDALE

AUDLEY SUNNINGDALE PARK
Silwood Road, Sunningdale,
Ascot, Berkshire, SL5 0QD



125 flats. Built in 2022. Sizes studio.

Facilities..... Lounge, Restaurant open to the public, Garden

Services..... Retirement Village scheme with on-site care staff (24 hours / 7 days), Non-resident management staff

Accessibility....

Lifestyle.....

Tenure(s)..... Tenure(s): Leasehold

Manager..... Audley Villages, Tel: 0800 093 8181

Berkshire

Windsor and Maidenhead

SUNNINGHILL

LYNWOOD VILLAGE

Rise Road, Sunninghill, Ascot,
Berkshire, SL5 0AJ



150 flats, cottages. Built in 2015. Sizes 1 bedroom, 2 bedroom, 3 bedroom.

Facilities..... Lift, Lounge, Dining room, Laundry, Guest facilities, Garden, Conservatory, Hobby room, Activities room, Cafe, Shop, Hairdressing salon, Jacuzzi, Swimming pool, Bar/pub, Library, Full physiotherapy and hydrotherapy practice, fitness & balance classes, opt

Services..... Independent Living scheme with on-site care staff (24 hours / 7 days), Non-resident management staff

Accessibility.... Whole site accessible by wheelchair. Access to site easy. Distances: bus stop 25 yards; shop 0.5 mile(s); post office 0.5 mile(s); town centre 1 mile(s); GP 0.25 mile(s).

Lifestyle..... social activities include: Residents receive a weekly activities schedule with regular exercise classes, social gatherings, interest groups, themed evenings in the restaurant, arts and crafts sessions in the Handy Room, choir, visiting musicians and speak

Tenure(s)..... Tenure(s): Leasehold

Manager..... BEN - Motor & Allied Trades Benevolent Fund,
Tel: 01344 876770

Manager's notes: Enjoy life at Lynwood Village

•Independent living made easy. Lynwood Village residents can choose from a range of activities, events and excursions in a vibrant, friendly community where it's easy to keep busy and find company, when you choose.

Linked care home

- **LYNWOOD CARE CENTRE** Lynwood Village, Rise Road, Sunninghill, Ascot, Berkshire SL5 0AJ

Home type . . Care home with nursing

Care for Older people generally / People with dementia

Description . . This home accommodates 102 residents in 102 single rooms (102 en suite). It was purpose built and has a garden. Facilities are available for family or friends to stay overnight.

Contact BEN - Motor & Allied Trades Benevolent Fund. Tel. 01344 298 100

Berkshire

Wokingham

TWYFORD

BRIDGE PARK

64 High Street, Twyford,
Reading, Berkshire, RG10 9AQ



11 flats, cottages. Built in 2017. Sizes 1 bedroom, 2 bedroom.

Facilities..... Lounge, Dining room, Garden

Services..... Assisted Living scheme with 24 hours / 7 days), Non-resident management staff and Careline alarm service

Accessibility....

Lifestyle..... Meal(s) available. New residents accepted from 55 years of age.

Tenure(s)..... Tenure(s): Leasehold

Manager..... Berkeley Health Care Ltd, Tel:

Manager's notes: Bridge House itself was built 200 years ago and was used as a residential dwelling until 1979 at which time it became a Nursing Home and continues to be so up to the present day.

The development will comprise of 54 nursing home bed spaces including a 2

Linked care home

- **BRIDGE HOUSE NURSING HOME** 64 High Street, Twyford, Reading, Berkshire RG10 9AQ

Home type . . Care home with nursing

Care for Older people generally / People with physical difficulties / People with sensory impairments / People with dementia / People with a terminal illness

Description . . This home accommodates 32 residents in 32 single rooms (27 en suite). It is a converted building with a garden. Overnight visitors can usually be accommodated.

Contact Bridge House Holdings Limited. Tel. 01189 340777

Buckinghamshire

Chiltern

CHALFONT ST PETER

AUDLEY CHALFONT DENE
Rickmansworth Lane, Chalfont
St. Peter, Gerrards Cross,
Buckinghamshire, SL9 0LX



142 flats, cottages. Built in 2013. Sizes 1 bedroom, 2 bedroom, 3 bedroom.

Facilities..... Lift, Lounge, Restaurant open to the public, Guest facilities, Garden, Hobby room, Cafe, Hairdressing salon, Swimming pool, Bar/pub, Library, sauna

Services..... Luxury Retirement Village scheme with on-site care staff (24 hours / 7 days), Resident management staff, Visiting management staff (24 hours, 7 days) and Careline alarm service

Accessibility.... Whole site accessible by wheelchair. Access to site easy, but less so for less mobile people. Distances: bus stop 0.5 mile(s); shop 0.5 mile(s); post office 0.5 mile(s); town centre 1 mile(s); GP 1 mile(s); social centre 1 mile(s).

Lifesytle..... social activities include: Regular social dinners, quiz nights., film club, and bridge clubs, organised by Village Manager. Meal(s) available. New residents accepted from 65 years of age. Both cats & dogs generally accepted.

Tenure(s)..... Tenure(s): Leasehold

Manager..... Audley Villages, Tel: 0800 093 8181

Manager's notes: Set alongside Buckinghamshire's rolling Chiltern Hills is Audley Chalfont Dene, a luxury development designed by award winning architects. At its heart is the magnificent Chalfont House, home to the Audley Club with its health club, library and restaurant

Buckinghamshire

Milton Keynes

SHENLEY WOOD

SHENLEY WOOD VILLAGE
Chalkdell Drive, Shenley Wood,
Milton Keynes,
Buckinghamshire, MK5 6LB



300 flats. Built in 2012. Sizes 1 bedroom, 2 bedroom.

Facilities..... Lift, Lounge, Dining room, Restaurant open to the public, Laundry, Guest facilities, Garden, Hobby room, Activities room, Hairdressing salon, Beauty Salon

Services..... Extra Care scheme with on-site care staff (24 hours / 7 days), Non-resident management staff (24 hours, 7 days) and Careline alarm service

Accessibility....

Lifesytle..... Meal(s) available. New residents accepted from 55 years of age.

Tenure(s)..... Tenure(s): Rent (social landlord) and Leasehold and Shared Ownership

Manager..... The ExtraCare Charitable Trust, Tel: 01908 413 000

Manager's notes: If you are over 60 (or 55 in special circumstances), live in Milton Keynes or have a local connection, and would like to apply for a home at Shenley Wood Village, please call the Village Team on 01908 413000.

There are 300 apartments at Shenley Wood

Buckinghamshire

Milton Keynes

WILLEN

LOVAT FIELDS VILLAGE
Japonica Lane, Willen, Milton
Keynes, Buckinghamshire,
MK15 9ED



258 flats, bungalows. Built in 2007. Sizes 1 bedroom, 2 bedroom.

Facilities..... Lift, Lounge, Dining room, Laundry, Guest facilities, Garden, Hobby room, Activities room, Cafe, Shop, Hairdressing salon, Bar/pub, Library, Computer/IT room, Village Hall, Bowling Greens - indoor and outdoor

Services..... Extra Care scheme with on-site care staff (24 hours / 7 days), Non-resident management staff (24 hours, 7 days) and Careline alarm service

Accessibility.... Whole site accessible by wheelchair. Access to site easy. Distances: bus stop 0.5 mile(s); shop 1 mile(s); post office 1 mile(s); town centre 3 mile(s); GP 1 mile(s).

Lifestyle..... Regular social activities include: Numerous. Meal(s) available (restaurant on site). New residents accepted from 60 years of age. Both cats & dogs generally accepted (with permission).

Tenure(s)..... Tenure(s): Rent (social landlord) and Shared Ownership and Leasehold

Manager..... The ExtraCare Charitable Trust, Tel: 01908 351 300

Manager's notes: The Village offers an independent lifestyle to over 300 local older people and is the result of a partnership between Milton Keynes Council, Midland Heart Ltd and The ExtraCare Charitable Trust. Up to 24 hour support is available for those who require it

Buckinghamshire

South Bucks

DENHAM

DENHAM GARDEN VILLAGE
Denham Green Lane, Denham,
Buckinghamshire, UB9 5LB



326 flats, bungalows, cottages. Built in 1955 and renovated in 2006. Sizes 1 bedroom, 2 bedroom, 3 bedroom. Includes wheelchair standard properties.

Facilities..... Restaurant open to the public, Garden, Conservatory, Community centre, Hobby room, Cafe, Shop, Hairdressing salon, Jacuzzi, Swimming pool, Bar/pub, Library

Services..... Extra Care scheme with on-site care staff (24 hours / 7 days), Resident management staff and Careline alarm service

Accessibility.... Whole site accessible by wheelchair. Access to site easy, but less so for less mobile people. Distances: bus stop 0.5 mile(s); shop 10 yards; town centre 800 yards; town centre 2 mile(s); GP 10 yards; social centre 10 yards.

Lifestyle..... Weekly social activities, organised by residents association. Meal(s) available. New residents accepted from 55 years of age. Both cats & dogs generally accepted (subject to conditions).

Tenure(s)..... Tenure(s): Leasehold and Rent (social landlord)

Manager..... Anchor Hanover, Tel: 0370 218 6622

Manager's notes: Denham Garden Village is Anchor's award-winning development of retirement apartments, houses and bungalows. Our location in the Buckinghamshire countryside offers the perfect balance of rural tranquillity with good road and rail access to London and the s

Buckinghamshire

Wycombe

HIGH WYCOMBE

HUGHENDEN GARDENS VILLAGE

Hughenden Boulevard, High Wycombe, Buckinghamshire, HP13 5GA



260 flats. Built in 2018. Sizes 1 bedroom, 2 bedroom.

Facilities..... Lift, Lounge, Restaurant open to the public, Laundry, Guest facilities, Garden, Conservatory, Hobby room, Activities room, Cafe, Shop, Hairdressing salon, Bar/pub, Library, reception and main street with communal seating areas, IT suite, well-being suite,

Services..... Independent Living scheme with on-site care staff (24 hours / 7 days), Non-resident management staff and Careline alarm service

Accessibility.... Whole site accessible by wheelchair.

Lifestyle..... social activities. Meal(s) available.

Tenure(s)..... Tenure(s): Shared Ownership and Leasehold and Rent (social landlord)

Manager..... The ExtraCare Charitable Trust, Tel: 01494 928 000

Manager's notes: Located on Hughenden Boulevard, just to the north of High Wycombe town centre, the Village provides 260 one and two bed apartments, carefully designed to encourage and support an independent and enriching lifestyle. The Village opened in May 2018.

The

Cheshire

Chester

CHESTER

BOUGHTON HALL

Filkins Lane, Chester, Cheshire, CH3 5EJ



80 flats. Built in 2011. Sizes 1 bedroom, 2 bedroom.

Facilities..... Lift, Lounge, Dining room, Laundry, Guest facilities, Garden, Conservatory, Hobby room, Activities room, Bar/pub, Library, Beauty & Hair Salon

Services..... Extra Care Retirement scheme with Non-resident management staff (24 hours, 7 days) and Careline alarm service

Accessibility.... Access to site easy.

Lifestyle..... social activities. Meal(s) available (in Garden Room Restaurant). New residents accepted from 55 years of age. Both cats & dogs generally accepted.

Tenure(s)..... Tenure(s): Leasehold

Manager..... Enterprise Retirement Living, Tel: 01223 835 995

Manager's notes: Boughton Hall is a luxury development in a private village setting, but with easy access to the beautiful city of Chester and all its amenities. There are excellent social opportunities for those who wish it whilst remaining independent by nature. Fine

Cheshire

Chester

TATTENHALL

GIFFORD LEA

Frog Lane, Gatesheath,
Tattenhall, Chester, CH3 9DN



151 flats. Built in 2016. Sizes 1 bedroom, 2 bedroom.

Facilities..... Lift, Lounge, Dining room, Laundry, Guest facilities, Garden, Community centre, Hobby room, Activities room, Cafe, Shop, Hairdressing salon, Jacuzzi, Swimming pool, Bar/pub, Library, Assisted bathing facility, Restaurant, Deli, Café

Services..... Retirement Village scheme with on-site care staff (24 hours / 7 days), Resident management staff (24 hours, 7 days) and Careline alarm service

Accessibility.... Whole site accessible by wheelchair. Access to site easy. Distances: shop 500 yards; post office 500 yards.

Lifestyle..... social activities include: as per residents' requirements or wishes, organised by our events organisers. Meal(s) available (Restaurant, Bar, Café, room service). New residents accepted from 65 years of age. Both cats & dogs generally accepted.

Tenure(s)..... Tenure(s): Leasehold and Rent (market)

Manager..... Inspired Villages, Tel: 0800 138 0235

Manager's notes: Welcome to Inspired Villages. You deserve a little luxury in later life. And it shouldn't cost the earth either. With a choice of beautiful homes, your very own wellness spa, bistro-cafe, landscaped gardens, village concierge and maintenance team, this is

Cheshire

Crewe and Nantwich

NANTWICH

RICHMOND NANTWICH

St. Josephs Way, London Road,
Nantwich, Cheshire, CW5 6LZ



72 flats. Built in 1995. Sizes 1 bedroom, 2 bedroom.

Facilities..... Lift, Stair lift(s), Lounge, Dining room, Laundry, Guest facilities, Garden, Conservatory, Activities room, Hairdressing salon, Bar/pub, Assisted bathing facility, bowling green, IT facility

Services..... Retirement Village scheme with on-site care staff (24 hours / 7 days), Non-resident management staff (24 hours, 7 days) and Careline alarm service

Accessibility.... Whole site accessible by wheelchair. Access to site easy. Distances: bus stop 200 yards; shop 0.5 mile(s); post office 0.5 mile(s); town centre 0.5 mile(s); GP 0.5 mile(s); social centre 0.5 mile(s).

Lifestyle..... Regular social activities include: Regular social activities designed around our residents requests and organised by the dedicated activities team, organised by Activities Team. Meal(s) available (full restaurant facilities). New residents accepted from

Tenure(s)..... Tenure(s): Leasehold

Manager..... Richmond Villages, Tel: 01270 629080

Manager's notes: Our luxury retirement community is situated at the edge of the delightful market town of Nantwich in South Cheshire. Built around its own pristine bowling green, the architecture reflects the historic, timbered buildings of Nantwich itself. Residents her

Linked care home

- **RICHMOND VILLAGE NANTWICH St Joseph's Way, London Road, Nantwich, Cheshire CW5 6LZ**

Home type . . . Care home

Care for Older people generally / People with a terminal illness

Description . . This home accommodates 41 residents in 41 single rooms (41 en suite). It was purpose built and has a garden. Facilities are available for family or friends to stay overnight.

Contact Richmond Villages. Tel. 01270 629 080

Cheshire

Macclesfield

MOBBERLEY

WARFORD PARK

Faulkners Lane, Mobberley,
Knutsford, Cheshire, WA16 7RW



84 flats, bungalows, cottages. Built in 1994. Sizes 1 bedroom, 2 bedroom, 3 bedroom.

Facilities..... Lounge, Laundry, Garden, Conservatory, Swimming pool, Library, kitchen

Services..... Resident management staff and Careline alarm service

Accessibility.... Whole site accessible by wheelchair. Access to site fairly easy. Distances: bus stop 2 mile(s); shop 4 mile(s); post office 4 mile(s); town centre 6 mile(s); GP 4 mile(s).

Lifestyle..... Regular social activities include: coffee mornings. New residents accepted from 60 years of age. Both cats & dogs generally accepted (subject to terms of lease and landlord permission).

Tenure(s)..... Tenure(s): Leasehold

Manager..... HML Guthrie, Tel: 01565 755 390

Manager's notes: Warford Park consists of retirement and non-retirement properties in a village atmosphere. Retirement properties are within The Maples, The Firs, The Beeches, Chestnut Mews, and The Elms. The development has an on site leisure club which boasts a pool, sa

Linked care home

- **THE WILLOWS Warford Park, Faulkners Lane, Mobberley, Cheshire WA16 7AR**

Home type . . Care home with nursing

Care for Older people generally / People with dementia

Description . . This home accommodates 61 residents in 61 single rooms (49 en suite). It was purpose built and has a garden. Overnight visitors can usually be accommodated.

Contact Methodist Homes. Tel. 01565 880180

Cheshire

Vale Royal

WINSFORD

HAZELMERE

Hambleton Way, Winsford,
Cheshire, CW7 1TL



106 flats. Built in 2009. Sizes 1 bedroom, 2 bedroom.

Facilities..... Lift, Lounge, Restaurant open to the public, Laundry, Guest facilities, Garden, Conservatory, Community centre, Hobby room, Activities room, Cafe, Shop, Hairdressing salon, Library, Assisted bathing facility, winter garden, sensory room village hall, gree

Services..... Extra Care scheme with on-site care staff (24 hours / 7 days), Visiting management staff, Non-resident management staff and Careline alarm service

Accessibility.... Whole site accessible by wheelchair. Access to site fairly easy. Distances: bus stop 67 yards; shop 0.2 mile(s); post office 0.5 mile(s); town centre 1 mile(s); GP 0.3 mile(s); social centre 1 mile(s).

Lifestyle..... Regular social activities include: There is a monthly calendar of events produced which is designed and reviewed in conjunction with residents each quarter, organised by Facilities & Events Manager - Avantage. Meal(s) available. New residents accepted f

Tenure(s)..... Tenure(s): Rent (social landlord) and Shared Ownership and Leasehold

Manager..... Avantage, Tel: 07458 062 839

Cheshire

Warrington

ORFORD

RYFIELD RETIREMENT VILLAGE

Arena Gardens, Norris Street,
Orford, Warrington, Cheshire,
WA2 7GB



243 flats, bungalows. Built in 2002. Sizes 1 bedroom, 2 bedroom.
Includes mobility and wheelchair standard properties.

Facilities..... Lift, Lounge, Dining room, Laundry, Guest facilities, Garden, Hobby room, Cafe, Shop, Hairdressing salon, Jacuzzi, Bar/pub, Library, Assisted bathing facility, greenhouse

Services..... Retirement Village scheme with on-site care staff (24 hours / 7 days), Non-resident management staff (24 hours, 7 days) and Careline alarm service

Accessibility.... Whole site accessible by wheelchair. Access to site easy, but less so for less mobile people. Distances: bus stop 200 yards; shop 100 yards; post office 250 yards; town centre 1.5 mile(s); GP 125 yards; social centre 1 mile(s).

Lifestyle..... Regular social activities include: indoor bowls, health & fitness, jacuzzi, video production, pottery, woodwork, internet, library, theatre workshops, gardening, trips, bingo etc. Meal(s) available. New residents accepted from 55 years of age. Both cats

Tenure(s)..... Tenure(s): Rent (social landlord) and Shared Ownership and Leasehold

Manager..... Your Housing Limited, Tel: 0345 345 0272

Manager's notes: For further information you can contact Nicola Croft, Village Services Coordinator on 01925 582 088

All our Retirement living developments provide fabulous communal accommodation with bistro, hobby/craft room, library/IT suite, residents lounge, pamper

Cornwall

Carrick

ROSELAND PENINSULAR

ROSELAND PARC

Tregony, Truro, Cornwall, TR2
5PD



59 flats, cottages. Built in 2007. Sizes 1 bedroom, 2 bedroom.

Facilities..... Lift, Lounge, Dining room, Guest facilities, Garden, Conservatory, Hobby room, Activities room, Cafe, Shop, Hairdressing salon, Jacuzzi, Swimming pool, Bar/pub, Library, Assisted bathing facility

Services..... on-site care staff, Non-resident management staff (24 hours, 7 days) and Careline alarm service

Accessibility.... Whole site accessible by wheelchair. Access to site easy. Distances: bus stop 250 yards; shop 200 yards; post office 200 yards; town centre 8 mile(s); GP 10 yards.

Lifestyle..... Regular social activities include: Social Calendar each month, organised by Reception Manager. Meal(s) available. New residents accepted from 55 years of age. Both cats & dogs generally accepted (on request from Village Manager).

Tenure(s)..... Tenure(s): Leasehold

Manager..... Retirement Villages Group Ltd, Tel: 01372 383 950

Manager's notes: Set in one of the country's most picturesque areas, Roseland Parc provides a stunning backdrop. And the extensive living options mean residents can enjoy the level of support they require, now and in the future.

There are a range of one and two bedroom

Linked care home

● ROSELAND COURT CARE HOME 23 Fore Street, Tregony, Truro, Cornwall TR2 5PD

Home type . . . Care home with nursing

Care for Older people generally / People with physical difficulties / People with dementia

Description . . This home accommodates 55 residents in 25 single and 3 shared rooms (16 en suite). It is a converted building with a garden.

Contact Retirement Villages Group Ltd. Tel. 0333 999 8755

Derbyshire

Chesterfield

OLD WHITTINGTON

LIFESTYLE VILLAGE

High Street, Old Whittington, Nr.
Chesterfield, Derbyshire, S41
9LQ



72 flats, bungalows. Built in 1982 and renovated in 2008. Sizes 1 bedroom, 2 bedroom.

Facilities..... Lounge, Laundry, Guest facilities, Garden, Community centre, Activities room

Services..... Resident management staff (24 hours, 7 days) and Careline alarm service

Accessibility....

Lifestyle.....

Tenure(s)..... Tenure(s): Leasehold and Rent (market)

Manager..... Lifestyle Gold Limited, Tel: 01246 456 702

Manager's notes: Lifestyle Village, in the heart of old Whittington, has fully landscaped gardens, beautiful lawns and patios, surrounded by tranquil, mature woodland. Set back from the main road, it is impressively situated in the grounds of what once was Whittington Hous

Derby

DERBY

WAR MEMORIAL VILLAGE

Walton Av, Sinfin Av, Darwin Av,
Edinburgh Cr, Spencer Av,
Merrill Wk, Chellaston Rd,
Mountbatten Cl, Derby, DE24 9JB



53 flats, bungalows, cottages. Sizes 1 bedroom, 2 bedroom, 3 bedroom. Includes mobility and wheelchair standard properties.

Facilities.....

Services..... Careline alarm service

Accessibility.... Access to site fairly easy.

Lifestyle..... Scheme for, or of particular interest to: disabled Derby resident ex-servicemen or women, in receipt of industrial injuries pension/war disability/registered disabled with ex-service background. Both cats & dogs generally accepted.

Tenure(s)..... Tenure(s): Rent (social landlord)

Manager..... Derby Homes, Tel: 01332 888777

Manager's notes: The War Memorial Village consists of a mixture of 53 flats, bungalows and houses. These properties will be of interest to resident ex-servicemen or women and disabled of Derby in receipt of industrial injuries, pension/war disability/registered disabled o

Derbyshire

Derbyshire Dales

DARLEY DALE

AUDLEY ST ELPHIN'S PARK

Dale Road South, Darley Dale,
Matlock, Derbyshire, DE4 2RH



127 flats, cottages. Built in 2006. Sizes 1 bedroom, 2 bedroom, 3 bedroom.

Facilities..... Lift, Lounge, Restaurant open to the public, Guest facilities, Garden, Cafe, Hairdressing salon, Swimming pool, Bar/pub, Library

Services..... Luxury Retirement Village scheme with on-site care staff (24 hours / 7 days), Non-resident management staff (24 hours, 7 days) and Careline alarm service

Accessibility.... Whole site accessible by wheelchair. Access to site easy. Distances: bus stop 0.01 mile(s); shop 0.8 mile(s); post office 1.7 mile(s); town centre 1 mile(s); GP 0.7 mile(s).

Lifestyle..... Regular social activities include: Social dinners, quiz nights, film club, and fashion shows, organised by Village Manager. New residents accepted from 55 years of age. Both cats & dogs generally accepted (Pets must be well-behaved).

Tenure(s)..... Tenure(s): Leasehold

Manager..... Audley Villages, Tel: 01629 258001

Manager's notes: A former school, and Victorian health spa, St Elphin's enjoys spectacular views of the Dales and the open countryside of the Peak District national park.

Nearby Matlock is a bustling market town sitting alongside the River Derwent. Retaining much of its

Derbyshire

South Derbyshire

ASTON-ON-TRENT

RICHMOND ASTON-ON-TRENT

Richmond Drive, Aston-on-Trent, Derby, Derbyshire, DE72 2EA



75 flats. Built in 2016. Sizes 1 bedroom, 2 bedroom.

Facilities..... Lift, Lounge, Restaurant open to the public, Laundry, Garden, Activities room, Cafe, Swimming pool, Bar/pub, Library, Wellness spa, rooftop terrace, woodland walks, fleet of vehicles and full-time driver for outings and shopping trips

Services..... Assisted Living scheme with 24 hours / 7 days), Non-resident management staff and Careline alarm service

Accessibility....

Lifestyle..... social activities. Meal(s) available. New residents accepted from 60 years of age.

Tenure(s)..... Tenure(s): Leasehold

Manager..... Richmond Villages, Tel: 01332 794305

Manager's notes: Redefining retirement living, Richmond Aston-on-Trent is a new luxury retirement village located in the quintessential village of Aston-on-Trent, in South Derbyshire. Richmond Aston-on-Trent opened in 2016 and offers a choice of exemplary accommodation wi

Linked care home

- **RICHMOND ASTON-ON-TRENT CARE HOME Willow Park Way, Aston-on-Trent, Derbyshire DE72 2DF**

Home type . . . Care home, Care home with nursing

Care for Older people generally / People with dementia / People with a terminal illness

Description . . . This home accommodates 60 residents in 60 single rooms (60 en suite). It was purpose built in 2017 and has a garden.

Contact Richmond Villages. Tel. 0113 495 0740

Derbyshire

South Derbyshire

SWADLINCOTE

OAKLAND VILLAGE

Hall Farm Road, Swadlincote, Derbyshire, DE11 8LH



88 flats. Built in 2012. Sizes 1 bedroom, 2 bedroom.

Facilities..... Lift, Lounge, Restaurant open to the public, Garden, Activities room, Shop, Jacuzzi, Bar/pub, IT suite

Services..... Extra Care scheme with on-site care staff (24 hours / 7 days), Non-resident management staff and Careline alarm service

Accessibility....

Lifestyle..... Meal(s) available. New residents accepted from 55 years of age.

Tenure(s)..... Tenure(s): Rent (social landlord) and Shared Ownership and Leasehold

Manager..... Trident Housing Association, Tel: 0800 111 4944

Manager's notes: This purpose-built extra care scheme aims to help you live life to the full, offering the opportunity for you to enjoy a host of different activities, stay fit and feel young. It boasts a comprehensive array of facilities, so you can get involved with fel

Devon

Exeter

EXETER

MILLBROOK VILLAGE

Topsham Road, Exeter, Devon,
EX2 6FD



206 flats, cottages. Built in 2014. Sizes 1 bedroom, 2 bedroom, 3 bedroom.

Facilities..... Lift, Lounge, Dining room, Guest facilities, Garden, Activities room, Bar/pub, Library, medical centre, indoor swimming pool, fitness suite, on-site parking, and a medical centre

Services..... Non-resident management staff and Careline alarm service

Accessibility....

Lifestytle..... New residents accepted from 55 years of age.

Tenure(s)..... Tenure(s): Leasehold and Rent (market)

Manager..... Inspired Villages, Tel: 0800 138 0235

Manager's notes: Nestled in a peaceful setting close to the river in the heart of the historic cathedral city of Exeter, Millbrook Village embodies the perfect blend of luxurious, independent retirement living combined with the comfort and security of an exclusive village

South Hams

SOUTH HAMS

AUDLEY FLETE HOUSE

Flete, Ermington, Ivybridge,
Devon, PL21 9NZ



30 flats. Renovated in 2005. Sizes 1 bedroom, 2 bedroom.

Facilities..... Lift, Stair lift(s), Lounge, Dining room, Laundry, Guest facilities, Garden, Library, snooker table, croquet lawn, and tennis court

Services..... Retirement Living scheme with on-site care staff, Non-resident management staff (24 hours) and Careline alarm service

Accessibility.... Access to site fairly easy, but less so for less mobile people. Distances: bus stop 0.5 mile(s); shop 4 mile(s); post office 4 mile(s); town centre 15 mile(s); GP 4 mile(s).

Lifestytle..... Meal(s) available. New residents accepted from 55 years of age.

Tenure(s)..... Tenure(s): Leasehold

Manager..... Audley Villages, Tel: 0800 093 8181

Manager's notes: With its stunning views of Dartmoor National Park, Flete House retirement village near Modbury, is proving to be a popular destination. The Grade 1-listed mansion, in the South Hams region of Devon, sits in 12 acres of landscaped grounds, including an lta

Devon

Teignbridge

ABBOTSKERSWELL

THE PRIORY

Priory Road, Abbotskerswell,
Newton Abbot, Devon, TQ12 5PP



43 flats, cottages. Built in 1994. Sizes 1 bedroom, 2 bedroom.

Facilities..... Lounge, Restaurant open to the public, Laundry, Guest facilities, Garden, Activities room

Services..... Non-resident management staff and Careline alarm service

Accessibility....

Lifestytle..... Regular social activities include: morning coffee, lunches, concerts, talks. Meal(s) available.

Tenure(s)..... Tenure(s): Leasehold

Manager..... Retirement Villages Group Ltd, Tel: 01372 383 950

Manager's notes: As its name suggests, The Priory was formerly home to an order of nuns. There are now 43 apartments and cottages along with facilities including a multi-function room - originally the chapel, a games room with snooker table, indoor swimming pool, library,

Torbay

TORQUAY

LINCOMBE MANOR VILLAGE

Middle Lincombe Road,
Torquay, Devon, TQ1 2NE



48 flats. Built in 2010. Sizes 1 bedroom, 2 bedroom.

Facilities..... Lift, Dining room, Garden, computer centre, allotment plots

Services..... Non-resident management staff

Accessibility....

Lifestytle..... New residents accepted from 55 years of age.

Tenure(s)..... Tenure(s): Leasehold and Rent (market)

Manager..... Manor House Senior Living, Tel: 01803 389 859

Linked care home

- **LINCOMBE MANOR CARE HOME** Middle Lincombe Road, Torquay, Devon TQ1 2AF

Home type . . . Care home with nursing

Care for Older people generally / People with physical difficulties / People with a terminal illness

Description . . This home accommodates 40 residents in 40 single rooms (40 en suite). It was purpose built in 2011 and has a garden. Overnight visitors can usually be accommodated.

Contact RMH (Manor House) Care LLP t/a Manolife. Tel. 01803 389 800

Dorset

West Dorset

DORCHESTER

SOMERLEIGH COURT
Somersleigh Road, Dorchester,
Dorset, DT1 1AQ



68 flats. Built in 2007. Sizes 1 bedroom, 2 bedroom.

Facilities..... Lift, Lounge, Dining room, Guest facilities, Garden, Hobby room, Activities room, Library
Services..... Close Care scheme with on-site care staff (24 hours / 7 days), Non-resident management staff and Careline alarm service
Accessibility.... Whole site accessible by wheelchair. Access to site easy. Distances: bus stop 300 yards; shop 300 yards; post office 300 yards; town centre 300 yards; GP 300 yards; social centre 300 yards.
Lifestyle..... social activities include: Sit-fit, coffee mornings, knit & natter, & outings etc, organised by staff and residents. New residents accepted from 65 years of age. Cats only generally accepted, but not to be replaced.
Tenure(s)..... Tenure(s): Leasehold

Manager..... LifeCare Residences Limited, Tel: 020 8939 9600

Manager's notes: Somersleigh Court offers independent living in the centre of Dorchester: our apartments are set in a delightful setting and residents have access to exceptional standards of care, 24-hours/7 days a week, as required.

Linked care home

- **SOMERLEIGH COURT Somersleigh Road, Dorchester, Dorset DT1 1AQ**

Home type . . . Care home with nursing

Care for Older people generally / People with dementia

Description . . This home accommodates 40 residents in 40 single rooms (40 en suite). It was purpose built.

Contact LifeCare Residences Limited. Tel. 01305 259 882

Dorset

Weymouth & Portland

WEYMOUTH

PINNACLE CARE & RETIREMENT VILLAGE
Barrack Road, Weymouth,
Dorset, DT4 8XF



195 flats. Built in 2019. Sizes 1 bedroom, 2 bedroom.

Facilities..... Lift, Lounge, Dining room, Restaurant open to the public, Garden, Hobby room, Activities room, Cafe, Shop, Hairdressing salon, Library, GP, Optician and dental surgery suite, bowling green
Services..... Extra Care scheme with on-site care staff, Visiting management staff, Non-resident management staff (24 hours) and Careline alarm service
Accessibility....
Lifestyle..... New residents accepted from 55 years of age.
Tenure(s)..... Tenure(s): Leasehold
Manager..... New Care Horizons Ltd, Tel:

Manager's notes: The care village will provide 195 supported living units – 34 one bed and 161 two bed – a 60-bed care home and 34 respite hotel suites, as well as medical support facilities, function rooms, health and wellbeing Spa retreat, leisure facilities and offices

Durham

Darlington

MIDDLETON ST. GEORGE

MIDDLETON HALL RETIREMENT VILLAGE

Middleton St. George,
Darlington, County Durham, DL2
1HA



70 flats, bungalows. Built in 2007. Sizes 1 bedroom, 2 bedroom, 3 bedroom.

Facilities..... Restaurant open to the public, Cafe, Shop, Hairdressing salon, Jacuzzi, Swimming pool, Bar/pub, allotments

Services..... on-site care staff, Non-resident management staff and Careline alarm service

Accessibility....

Lifestyle.....

Tenure(s)..... Tenure(s): Leasehold and Rent (market)

Manager..... Middleton Hall Limited, Tel: 01325 332 207

Manager's notes: Middleton Hall is a multi-award winning retirement village. Our estate, facilities and services offer residents the opportunity to live a rich and fulfilling retirement. A wide range of accommodation is available, with the ability to move to a different p

Linked care home

- **MIDDLETON HALL LTD Middleton St George, Darlington, Co Durham DL2 1HA**

Home type . . . Care home with nursing

Care for Older people generally / People with physical difficulties

Description . . This home accommodates 77 residents. It was purpose built and has a garden. Facilities are available for family or friends to stay overnight.

Contact Middleton Hall Ltd. Tel. 01325 332207

Durham

Hartlepool

HARTLEPOOL

HARTFIELDS RETIREMENT VILLAGE

Bishop Cuthbert, Middle Warren,
Hartlepool, TS26 0US



242 flats, bungalows. Built in 2008. Sizes 1 bedroom, 2 bedroom.

Facilities..... Lift, Lounge, Restaurant open to the public, Laundry, Guest facilities, Garden, Community centre, Hobby room, Activities room, Cafe, Shop, Hairdressing salon, Swimming pool, Bar/pub, Library, Assisted bathing facility, glass roofed atrium, spa pool, It fa

Services..... Extra Care Village scheme with on-site care staff (24 hours / 7 days), Non-resident management staff and Careline alarm service

Accessibility.... Whole site accessible by wheelchair. Access to site easy. Distances: bus stop 500 yards; shop 0.5 mile(s); post office 2 mile(s); town centre 2 mile(s); GP 20 yards; social centre 20 yards.

Lifestyle..... Regular social activities include: Tai-chi, chair-obics, tea dances, coffee mornings, bridge club, indoor bowls, social evenings etc, organised by Some by residents and some by staff. Meal(s) available. New residents accepted from 55 years of age. Both

Tenure(s)..... Tenure(s): Rent (social landlord) and Leasehold and Shared Ownership

Manager..... The Joseph Rowntree Housing Trust, Tel: 0800 587 0211

Manager's notes: Hartfields retirement village is aimed at promoting independence and choice for older people. It provides modern homes (built to national standard 'Lifetime Home'), with the availability of support and wellbeing services. The neighbourhood offers an extens

East Riding of Yorkshire

East Riding of Yorkshire

HEDON

HOLDERNESS GRANGE

Drapers Lane, Hedon, Hull,
North Humberside, HU12 8BG



143 flats, bungalows, cottages. Built in 2006. Sizes 1 bedroom, 2 bedroom.

Facilities..... Lounge, Restaurant open to the public, Garden, Hobby room

Services..... Non-resident management staff

Accessibility....

Lifestyle..... New residents accepted from 55 years of age.

Tenure(s)..... Tenure(s): Leasehold and Rent (market)

Manager..... HICA Group, Tel: 01482 581000

Manager's notes: Holderness Grange Lifestyle Village in the market town of Hedon, to the east of Hull, is the first of its kind in the area. The homes are sited within private and secure grounds providing a village environment. On-site facilities include a Country Club wi

East Sussex

Eastbourne

EASTBOURNE

THE HAWTHORNS EASTBOURNE

4 Carew Road, Eastbourne, East
Sussex, BN21 2BF



120 flats, bungalows. Built in 1999 and renovated in 2016. Sizes studio, 1 bedroom, 2 bedroom.

Facilities..... Lift, Lounge, Dining room, Laundry, Guest facilities, Garden, Conservatory, Activities room, Hairdressing salon, Library, gym equipment, private coach, laundry on each floor

Services..... Non-resident management staff (7 days) and Careline alarm service

Accessibility.... Whole site accessible by wheelchair. Access to site easy. Distances: bus stop 25 yards; shop 1 mile(s); post office 1 mile(s); town centre 1 mile(s); GP 500 yards; social centre 1 mile(s).

Lifestyle..... Monthly social activities include: Daily activities arranged to exercise the body & mind, entertainment & excursions, and regular local trips in private mini coach, organised by The Activities Co-ordinator. Meal(s) available (3 meals provided daily, serve

Tenure(s)..... Tenure(s): Rent (market)

Manager..... Hawthorns Retirement Group UK Ltd, Tel: 01323 640 088

Manager's notes: At The Hawthorns Eastbourne we offer an excellent choice of fully serviced rental apartments for the retired. Dining and activities can be shared with like-minded neighbours, in comfortable surrounds that support independent living. Ideal for couples or s

East Sussex

Lewes

DITCHLING COMMON

ST GEORGE'S PARK
Ditchling Common, Burgess Hill,
East Sussex, RH15 0SF



240 flats. Built in 2006. Sizes 1 bedroom, 2 bedroom. Includes mobility and wheelchair standard properties.

Facilities..... Lift, Lounge, Restaurant open to the public, Laundry, Guest facilities, Garden, Hobby room, Activities room, Shop, Hairdressing salon, Bar/pub, Library, bowling green, concert hall, fishing lake

Services..... Independent Living scheme with on-site care staff, Non-resident management staff and Careline alarm service

Accessibility.... Whole site accessible by wheelchair. Access to site fairly easy. Distances: bus stop 100 yards; shop 2 mile(s); post office 2 mile(s); town centre 3 mile(s); GP 2 mile(s); social centre 2 mile(s).

Lifesytyle..... Regular social activities include: art club, scrabble club, walking club, allotments, themed evenings., organised by residents and hospitality staff. Meal(s) available (in restaurant). New residents accepted from 60 years of age. Both cats & dogs genera

Tenure(s)..... Tenure(s): Leasehold

Manager..... Augustinian Care, Tel: 01444 259 732

Manager's notes: Set in 250 acres of outstanding natural beauty, St. George's Park is possibly the most exquisite and visionary development, for the over 60's, available on the market.

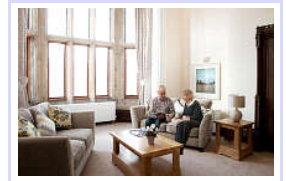
This innovative concept will enable you to enjoy the freedom to concentrate on plea

East Sussex

Wealden

CROSS-IN-HAND

**HOLY CROSS PRIORY
APARTMENTS**
Lewes Road, Cross-in-Hand,
Heathfield, East Sussex, TN21
0DZ



37 flats. Built in 2012. Sizes 1 bedroom, 2 bedroom.

Facilities..... Lift, Lounge, Restaurant open to the public, Guest facilities, Garden, Activities room, Cafe, Shop, Hairdressing salon, Bar/pub, Library, function room where activities will take place

Services..... Close Care scheme with on-site care staff (24 hours / 7 days), Resident management staff (24 hours, 7 days) and Careline alarm service

Accessibility.... Whole site accessible by wheelchair. Access to site fairly easy. Distances: bus stop 50 yards; shop 1 mile(s); post office 3 mile(s); town centre 3 mile(s); GP 1 mile(s); social centre 2 mile(s).

Lifesytyle..... social activities include: art club, scrabble, and entertainment, organised by residents and hospitality staff. Meal(s) available. New residents accepted from 55 years of age. Both cats & dogs generally accepted, but not to be replaced (residents can b

Tenure(s)..... Tenure(s): Leasehold and Rent (social landlord)

Manager..... The Grace & Compassion Benedictines, Tel: 01273 502129

Linked care home

- **HOLY CROSS CARE HOME Lewes Road, Cross-in-Hand, Heathfield, East Sussex TN21 0DZ**

Home type . . . Care home with nursing

Care for Older people generally

Description . . This home accommodates 45 residents in 45 single rooms (45 en suite). It was purpose built in 2012 and has a garden. Facilities are available for family or friends to stay overnight.

Contact The Grace & Compassion Benedictines. Tel. 01435 863764

Essex

Braintree

BRAINTREE

MEADOW PARK VILLAGE
Tortoiseshell Way, Braintree,
Essex, CM7 1TD



101 flats, bungalows, cottages. Built in 2007. Sizes 1 bedroom, 2 bedroom, 3 bedroom.

Facilities..... Lounge, Dining room, Guest facilities, Garden, Activities room, Shop, Hairdressing salon, Library, clubhouse

Services..... Visiting management staff, Non-resident management staff (part time) and Careline alarm service

Accessibility....

Lifestyle..... New residents accepted from 55 years of age. Both cats & dogs generally accepted (subject to terms of lease and landlord permission).

Tenure(s)..... Tenure(s): Leasehold

Manager..... FirstPort, Tel: 0333 321 4041 (management) or 0333 321 4072 (sales)

Manager's notes: Meadow Park, Tortoiseshell Way, Braintree, is a £20 million development on a 12 acre site. Plans include 49 one and two-bedroom apartments, 21 two-bedroom cottages and 31 bungalows in landscaped grounds. Infrastructure work and construction of the first p

Essex

Braintree

MEADOW PARK

THE HAWTHORNS BRAINTREE
Meadow Park, Tortoiseshell
Way, Braintree, Essex, CM7 1TD



104 flats. Built in 2009 and renovated in 2017. Sizes studio, 1 bedroom, 2 bedroom.

Facilities..... Lift, Lounge, Dining room, Restaurant open to the public, Laundry, Guest facilities, Garden, Hobby room, Activities room, Cafe, Hairdressing salon, Library, gym equipment, laundry on each floor, cinema room, carpet bowls dance floor, private dining room

Services..... Extra Care scheme with Resident management staff (24 hours) and Careline alarm service

Accessibility.... Whole site accessible by wheelchair. Access to site easy. Distances: bus stop 100 yards; shop 0.5 mile(s); post office 2 mile(s); town centre 2 mile(s); GP 2 mile(s); social centre 2 mile(s).

Lifestyle..... social activities include: Daily activities arranged to exercise the body & mind, entertainment, excursions, and regular local trips in private minicoach, organised by Well-being and Activities Co-ordinator. Meal(s) available (3 meals a day served in dini

Tenure(s)..... Tenure(s): Rent (market)

Manager..... Hawthorns Retirement Group UK Ltd, Tel: 01376 335 500

Manager's notes: We like to think we are one big happy family here with a very strong community feel to the building. Our staff are the key to our success and continually go that extra mile for our residents displaying an understanding, compassion and superb level of cus

Essex

Colchester

ABBERTON

ABBERTON GRANGE

Layer Road, Abberton,
Colchester, Essex, CO5 7NL



31 flats. Built in 2007. Sizes 1 bedroom, 2 bedroom.

Facilities..... Lift, Lounge, Guest facilities, Garden

Services..... Non-resident management staff (part time) and
Careline alarm service

Accessibility....

Lifestyle..... Both cats & dogs generally accepted, but not to
be replaced.

Tenure(s)..... Tenure(s): Leasehold and Rent (market)

Manager..... Heritage Manor Ltd, Tel: 0870 471 8557

Manager's notes: Abberton Manor is a magnificent listed Queen Ann Manor, situated 3 miles south of Colchester in attractively lawned gardens and woodland, with beautiful views over the Roman River Valley. The manor house is a registered care home, with an excellent local

Linked care home

- **ABBERTON MANOR NURSING HOME** Abberton, Colchester, Essex CO5 7NL

Home type . . Care home with nursing

Care for People with physical difficulties

Description . . This home accommodates 26 residents. It is a converted building with a garden. Facilities are available for family or friends to stay overnight.

Contact Heritage Manor Ltd. Tel. 01206 735 590

Essex

Uttlesford

GREAT EASTON

MOAT PARK RETIREMENT VILLAGE

Dunmow Road, Great Easton,
Dunmow, Essex, CM6 2DL



35 flats, cottages. Built in 2014. Sizes 1 bedroom, 2 bedroom.

Facilities..... Lounge, Dining room, Garden

Services..... Non-resident management staff and Careline
alarm service

Accessibility....

Lifestyle..... New residents accepted from 55 years of age.

Tenure(s)..... Tenure(s): Leasehold

Manager..... Retirement Villages Group Ltd, Tel: 01372 383
950

Manager's notes: Within the grounds of Moat Park, Maynard House, our exclusive apartment scheme is now taking shape for completion late spring 2014. A total of 26 apartments are being built in the grounds and once complete they will provide some of the area's premium priv

Linked care home

- **THE MOAT HOUSE** Dunmow Road, Great Easton, Great Dunmow, Essex CM6 2DL

Home type . . Care home, Care home with nursing

Care for Older people generally / People with dementia

Description . . This home accommodates 72 residents in 72 single rooms (72 en suite). It was purpose built in 2011 and has a garden.

Contact HC-One. Tel. 0333 999 8745

Essex

Uttlesford

SAFFRON WALDEN

DEBDEN GRANGE RETIREMENT VILLAGE
off Burywater Lane &
Whitechurch Lane, Newport,
Saffron Walden, Essex, CB11 3TZ



81 flats, cottages. Built in 2020. Sizes 1 bedroom, 2 bedroom.

Facilities..... Lift, Lounge, Dining room, Guest facilities, Garden, Shop, Bar/pub

Services..... Extra Care scheme with Non-resident management staff

Accessibility....

Lifestyle..... Meal(s) available. New residents accepted from 60 years of age.

Tenure(s)..... Tenure(s): Leasehold and Shared Ownership and Rent (market)

Manager..... Retirement Villages Group Ltd, Tel: 01372 383 950

Manager's notes: The retirement village, located near the M11 in Newport, will consist of 17 two-bedroom cottages, 64 one and two-bedroom apartments with an optional domiciliary care service if required and a dedicated 40-bed care home, for those that require extra support

Gloucestershire

Cheltenham

CHELTENHAM

RICHMOND CHELTENHAM
Hatherley Lane, Cheltenham,
Gloucestershire, GL51 6PN



55 flats. Built in 2019. Sizes 1 bedroom, 2 bedroom.

Facilities..... Lift, Lounge, Dining room, Garden, Bar/pub, Wellness Spa

Services..... Extra Care scheme with Careline alarm service

Accessibility....

Lifestyle..... New residents accepted from 60 years of age.

Tenure(s)..... Tenure(s): Leasehold and Rent (market)

Manager..... Richmond Villages, Tel: 01242 474333

Manager's notes: Redefining retirement living, Richmond Cheltenham is a new luxury retirement village located in a peaceful woodland setting in the affluent spa town, Cheltenham. Richmond Cheltenham offers a choice of exemplary accommodation with a wealth of state-of-the-art

Linked care home

- **RICHMOND CHELTENHAM CARE HOME Hatherley Lane, Cheltenham, Gloucestershire GL51 6PN**

Home type . . . Care home, Care home with nursing

Care for Older people generally / People with dementia

Description . . . This home accommodates 60 residents in 60 single rooms (60 en suite). It was purpose built in 2020 and has a garden.

Contact Richmond Villages. Tel. 0113 495 0741

Cotswold

SIDDINGTON PARK

**SIDDINGTON PARK
RETIREMENT VILLAGE**
, Siddington, Cirencester,
Gloucestershire, GL7 6ET



123 flats. Built in 2022. Sizes 1 bedroom, 2 bedroom, 3 bedroom.

Facilities..... Lounge, Restaurant open to the public, Garden, Swimming pool

Services..... Extra Care scheme with on-site care staff (24 hours / 7 days), Non-resident management staff

Accessibility....

Lifestyle.....

Tenure(s)..... Tenure(s): Leasehold

Manager..... Rangeford Villages Ltd, Tel: 0800 135 7420

Gloucestershire

Gloucester

GLOUCESTER

ST OSWALD'S RETIREMENT VILLAGE

Gavel Way, Gloucester,
Gloucestershire, GL1 2UF



166 flats, bungalows. Built in 2010. Sizes 1 bedroom, 2 bedroom.

Facilities..... Lift, Lounge, Dining room, Restaurant open to the public, Laundry, Guest facilities, Garden, Hobby room, Activities room, Cafe, Hairdressing salon, Bar/pub

Services..... Extra Care scheme with on-site care staff (24 hours / 7 days), Non-resident management staff (24 hours, 7 days) and Careline alarm service

Accessibility....

Lifestyle..... Meal(s) available.

Tenure(s)..... Tenure(s): Rent (social landlord) and Shared Ownership and Leasehold

Manager..... The ExtraCare Charitable Trust, Tel: 01452 875 000

Manager's notes: St Oswald's Village provides 166 affordable homes in the form of one and two bedroom self-contained apartments and eight bungalows, located around an extensive village centre providing social, learning and leisure opportunities for both residents and the

Gloucestershire

South Gloucestershire

BRISTOL

STOKE GIFFORD RETIREMENT VILLAGE

Edward Parker Road, Bristol,
Avon, BS16 1YG



261 flats. Built in 2018. Sizes 1 bedroom, 2 bedroom.

Facilities..... Lift, Lounge, Restaurant open to the public, Laundry, Guest facilities, Garden, Hobby room, Activities room, Shop, Hairdressing salon, Library, Village Hall, fitness suite, IT suite, reception

Services..... Extra Care scheme with on-site care staff (24 hours / 7 days), Non-resident management staff and Careline alarm service

Accessibility.... Whole site accessible by wheelchair.

Lifestyle..... social activities. Meal(s) available. New residents accepted from 55 years of age. Both cats & dogs generally accepted (with permission).

Tenure(s)..... Tenure(s): Shared Ownership and Rent (social landlord) and Leasehold

Manager..... The ExtraCare Charitable Trust, Tel: 02476 506 011

Manager's notes: Stoke Gifford Retirement Village provides a new lease of life for over 55s in South Gloucestershire and Bristol when it opened in late 2018. This exciting retirement village lets you lead an active and fulfilling life as part of a vibrant local community.

Gloucestershire

Stroud

COTSWOLDS

RICHMOND PAINSWICK
Stroud Road, Painswick, Stroud,
Gloucestershire, GL6 6UL



59 flats. Built in 2007. Sizes 1 bedroom, 2 bedroom, 3 bedroom.

Facilities..... Lift, Stair lift(s), Lounge, Dining room, Restaurant open to the public, Laundry, Guest facilities, Garden, Hobby room, Activities room, Cafe, Shop, Hairdressing salon, Jacuzzi, Swimming pool, Bar/pub, Library, Assisted bathing facility, IT suite

Services..... Assisted Living scheme with on-site care staff (24 hours / 7 days), Non-resident management staff (24 hours, 7 days) and Careline alarm service

Accessibility.... Whole site accessible by wheelchair. Access to site fairly easy, but less so for less mobile people. Distances: bus stop 500 yards; shop 0.25 mile(s); post office 0.25 mile(s); town centre 0.25 mile(s); GP 0.25 mile(s); social centre 10 yards.

Lifestyle..... Regular social activities include: varied daily social activities schedule designed around residents, organised by Activities team. Meal(s) available (full restaurant & café facilities). New residents accepted from 55 years of age. Both cats & dogs gene

Tenure(s)..... Tenure(s): Leasehold

Manager..... Richmond Villages, Tel: 01926 675 825

Manager's notes: Richmond Painswick is an award winning retirement village situated on the southern slopes of the Cotswold village of Painswick. The village provides independent living apartments, assisted living apartments, and 24 hour nursing care in our care home. The

Linked care home

- **RICHMOND VILLAGE PAINSWICK** Stroud Road, Painswick, Stroud, Gloucestershire GL6 6UL

Home type . . . Care home with nursing

Care for Older people generally / People with a terminal illness

Description . . This home accommodates 24 residents in 24 single rooms (24 en suite). It was purpose built in 2007 and has a garden. Facilities are available for family or friends to stay overnight.

Contact Richmond Villages. Tel. 01452 813 902

Gloucestershire

Stroud

INCHBROOK

WOODCHESTER VALLEY VILLAGE
Inchbrook Way, Inchbrook,
Stroud, Gloucestershire, GL5 5HY



72 flats, cottages. Built in 2002. Sizes 1 bedroom, 2 bedroom, 3 bedroom. Includes mobility and wheelchair standard properties.

Facilities..... Lift, Lounge, Restaurant open to the public, Laundry, Guest facilities, Garden, Shop, minibus

Services..... Extra Care scheme with on-site care staff, Non-resident management staff (24 hours, 7 days) and Careline alarm service

Accessibility.... Access to site fairly easy. Distances: bus stop 400 yards; shop 1 mile(s); post office 1 mile(s); town centre 1 mile(s); GP 1 mile(s); social centre 1 mile(s).

Lifestyle..... Weekly social activities, organised by management. Meal(s) available (all meals daily). New residents accepted from 55 years of age. Both cats & dogs generally accepted.

Tenure(s)..... Tenure(s): Leasehold and Rent (market)

Manager..... Woodchester Valley Village, Tel: 01453 837 700

Manager's notes: Woodchester Valley Retirement Village is a mutually owned village, run on behalf of the residents, for the residents. Nestled in a verdant Cotswold valley, it is laid out like a typical Gloucestershire village, with a real community feel. Our residents n

Greater London

Wandsworth

BATTERSEA

BATTERSEA PLACE
73 Albert Bridge Road,
Battersea, London, SW11 4DS



103 flats. Built in 2015. Sizes 1 bedroom, 2 bedroom, 3 bedroom.

Facilities..... Lift, Lounge, Dining room, Guest facilities, Garden, Hobby room, Activities room, Hairdressing salon, Jacuzzi, Swimming pool, Bar/pub, Library, cinema room

Services..... Extra Care scheme with on-site care staff (24 hours / 7 days), Non-resident management staff and Careline alarm service

Accessibility.... Whole site accessible by wheelchair. Access to site fairly easy. Distances: bus stop 400 yards; shop 300 yards; post office 400 yards; town centre 1 mile(s); GP 1 mile(s).

Lifesytle..... social activities include: exercise, hobbies, tea and coffee, outings, and events, organised by staff, guided by residents committee. Meal(s) available (meals in the restaurant or can be delivered). New residents accepted from 60 years of age. Both cat

Tenure(s)..... Tenure(s): Leasehold

Manager..... LifeCare Residences Limited, Tel: 020 8939 9600

Manager's notes: London's first luxury retirement community is a truly exceptional place to live. It is a place to enjoy an enriched, independent lifestyle but with security, and opportunities for companionship and new friends. A safe and secure environment, with access t

Gwynedd

Gwynedd

PENRHOS

POLISH HOUSING SOCIETY LTD
Penrhos Home, Penrhos,
Pwllheli, Gwynedd, LL53 7HN



105 flats. Built in 1982. Sizes studio, 1 bedroom, 2 bedroom.

Facilities..... Lift, Lounge, Dining room, Laundry, Guest facilities, Garden, Community centre, Shop, Hairdressing salon, Library, Assisted bathing facility, Church

Services..... Extra Care scheme with on-site care staff, Non-resident management staff (24 hours) and Careline alarm service

Accessibility.... Access to site easy, but less so for less mobile people. Distances: bus stop 200 yards; shop 2 mile(s); post office 2 mile(s); town centre 2 mile(s); GP 2 mile(s); social centre 2 mile(s).

Lifesytle..... Scheme for, or of particular interest to: Polish residents. social activities include: Outings, bingo, keep fit, concerts, choirs, dance, orcheatsra, café, car boot sales etc, organised by Staff and friends of Penrhos Home. New residents accepted from 6

Tenure(s)..... Tenure(s): Rent (social landlord)

Manager..... Polish Housing Society, Tel: 01758 612 731

Manager's notes: Residents pay a weekly charge which covers rent, three meals per day in the central dining room, heating and electricity.

When a residents health deteriorates and care needs increase they can move to the care home on the site where residential or nursi

Hampshire

East Hampshire

BRAMSHOTT

BRAMSHOTT PLACE

Hewshott Lane, Liphook,
Hampshire, GU30 7GN



147 flats, cottages. Built in 2009. Sizes 1 bedroom, 2 bedroom, 3 bedroom.

Facilities..... Lift, Lounge, Dining room, Guest facilities, Activities room, Shop, Swimming pool, Bar/pub, Library, on-site GP surgery, residents atrium/coffee area, snooker/card room, club room

Services..... Non-resident management staff and Careline alarm service

Accessibility.... Access to site easy, but less so for less mobile people. Distances: bus stop 20 yards; shop 20 yards; post office 0.5 mile(s); town centre 1 mile(s); GP 20 yards; social centre 1.5 mile(s).

Lifestyle..... social activities, organised by residents. New residents accepted from 55 years of age. Both cats & dogs generally accepted.

Tenure(s)..... Tenure(s): Leasehold

Manager..... Inspired Villages, Tel: 0800 138 0235

Manager's notes: Situated amongst beautiful natural parkland near the village of Liphook on the border of Hampshire, West Sussex and Surrey, Bramshott Place is a luxurious village community for the active, independent over 55s. Developed by multi award-winning Renaissance

Hampshire

Eastleigh

EASTLEIGH

BISHOPSTOKE PARK

Church Road, Bishopstoke,
Eastleigh, Hampshire, SO50 6DN



170 flats. Built in 2014. Sizes 1 bedroom, 2 bedroom.

Facilities..... Lounge, Dining room, Garden, Activities room, Shop, Hairdressing salon, Jacuzzi, Swimming pool

Services..... Retirement Living scheme with on-site care staff (24 hours / 7 days), Non-resident management staff and Careline alarm service

Accessibility....

Lifestyle..... Meal(s) available.

Tenure(s)..... Tenure(s): Leasehold

Manager..... Anchor Hanover, Tel: 0370 218 6622

Manager's notes: Bishopstoke Park offers a range of beautiful homes, like-minded neighbours, a vibrant community and plenty of the finer things to discover and savour. It is a retirement village that's quite unlike anywhere else, where every inch is designed around you.

Linked care home

- **ORCHARD GARDENS Bishopstoke Park, Church Road, Bishopstoke, Eastleigh, Hampshire SO50 6HE**

Home type . . . Care home

Care for Older people generally / People with physical difficulties / People with sensory impairments / People with dementia

Description . . This home accommodates 48 residents in 48 single rooms (48 en suite). It was purpose built in 2016.

Contact Anchor. Tel. 0333 220 4881

Hampshire

Hart

YATELEY

HAMPSHIRE LAKES

Oakleigh Square, Hammond Way, Yateley, Hampshire, GU46 7UT



119 flats. Built in 2015. Sizes 1 bedroom, 2 bedroom.

Facilities..... Lift, Restaurant open to the public, Laundry, Guest facilities, Garden, Hobby room, Activities room, Cafe, Shop, Hairdressing salon, Swimming pool, Library, Juice bar, indoor swimming pool, thermal & hydrotherapy facilities, car parking facilities, allotm

Services..... Assisted Living scheme with on-site care staff (24 hours / 7 days), Non-resident management staff and Careline alarm service

Accessibility....

Lifesytle..... Meal(s) available.

Tenure(s)..... Tenure(s): Leasehold

Manager..... Anchor Hanover, Tel: 0370 218 6622

Manager's notes: Hampshire Lakes retirement village offers a unique experience; beautiful apartments with lakeside scenery, state-of-the-art facilities and a community of like-minded people. At Hampshire Lakes you can enjoy the best of luxury retirement living while maint

Linked care home

- **WILLOW GARDENS Hampshire Lakes Village, Sandhurst Road, Yateley, Hampshire GU46 7AG**

Home type . . . Care home

Care for Older people generally / People with dementia

Description . . This home accommodates 36 residents in 36 single rooms (36 en suite). It was purpose built and has a garden.

Contact Anchor. Tel. 0333 220 4881

Hampshire

Rushmoor

ALDERSHOT

BEAUMONT VILLAGE

Alexandra Road, Aldershot, Hampshire, GU11 1BB



62 flats, bungalows. Built in 2003. Sizes 1 bedroom, 2 bedroom. Includes mobility and wheelchair standard properties.

Facilities..... Lift, Stair lift(s), Lounge, Dining room, Restaurant open to the public, Laundry, Guest facilities, Garden, Conservatory, Community centre, Hobby room, Activities room, Cafe, Shop, Hairdressing salon, Library, Assisted bathing facility

Services..... Extra Care & Support scheme with on-site care staff (24 hours / 7 days), Resident management staff (24 hours) and Careline alarm service

Accessibility.... Whole site accessible by wheelchair. Access to site easy. Distances: bus stop 25 yards; shop 25 yards; post office 100 yards; town centre 200 yards; GP 150 yards; social centre 150 yards.

Lifesytle..... Regular social activities include: outings, parties etc, organised by residents and staff. Meal(s) available (3 meals per day). New residents accepted from 55 years of age. Both cats & dogs generally accepted, but not to be replaced (with permission fro

Tenure(s)..... Tenure(s): Leasehold and Rent (market)

Manager..... Karis Homes Ltd, Tel: 01252 346700

Manager's notes: Beaumont have trained staff that can provide additional packages of care and support directly to your home. A large street area provides excellent opportunities for fun and activities. On-site is a hair salon and chiropody together with a mini-bus for o

Hampshire

Test Valley

NURSLING

GROVE PLACE

Upton Lane, Nursling,
Southampton, Hampshire, SO16
0XY



115 flats, bungalows. Built in 2009. Sizes 1 bedroom, 2 bedroom, 3 bedroom.

Facilities..... Lift, Lounge, Dining room, Guest facilities, Garden, Hobby room, Activities room, Shop, Hairdressing salon, Jacuzzi, Swimming pool, Bar/pub, Library, billiards room

Services..... Extra Care scheme with on-site care staff (24 hours / 7 days), Non-resident management staff

Accessibility.... Whole site accessible by wheelchair. Access to site fairly easy. Distances: bus stop 3 mile(s); shop 10 yards; post office 1 mile(s); town centre 2 mile(s); GP 2 mile(s); social centre 2 mile(s).

Lifestyle..... social activities include: exercise, social occasions, hobbies, and trips, organised by village staff - guided by the Residents Committee. Meal(s) available (lunch daily & dinner Wed/Fri in restaurant). New residents accepted from 65 years of age. Bot

Tenure(s)..... Tenure(s): Leasehold

Manager..... LifeCare Residences Limited, Tel: 020 8939 9600

Manager's notes: The Manor House provides the perfect setting for social life and relaxation, with a fine oak panelled restaurant, bar, library, and billiards room. You can enjoy a swim at our health and fitness centre... Grove Place - for the lifestyle you deserve.

Gr

Hampshire

Test Valley

ROMSEY

AUDLEY STANBRIDGE EARLS

Stanbridge Lane, Stanbridge
Earls, Romsey, Hampshire, SO51
0ZS



155 flats, cottages. Built in 2020. Sizes 1 bedroom, 2 bedroom.

Facilities..... Lift, Dining room, Restaurant open to the public, Guest facilities, Garden, Cafe, Hairdressing salon, Swimming pool, Bar/pub, Library, Health Club, parking facilities

Services..... Extra Care scheme with on-site care staff (24 hours / 7 days), Visiting management staff, Non-resident management staff (24 hours, 7 days) and Careline alarm service

Accessibility....

Lifestyle..... Meal(s) available. New residents accepted from 60 years of age.

Tenure(s)..... Tenure(s): Leasehold

Manager..... Audley Villages, Tel: 0800 093 8181

Manager's notes: Sitting in 32 acres of grounds, close to Romsey, in Hampshire is Audley Stanbridge Earls retirement village. Planned to open early 2020 the village will have 155 cottages and apartments designed to complement the Grade II* Tudor Manor house at its centre.

Herefordshire

Herefordshire

HEREFORD

THE ROSE GARDEN

Ledbury Road, Hereford,
Herefordshire, HR1 2TR



91 flats, bungalows. Built in 2008. Sizes 1 bedroom, 2 bedroom.

Facilities..... Lift, Lounge, Dining room, Laundry, Guest facilities, Garden, Conservatory, Hobby room, Activities room, Cafe, Shop, Hairdressing salon, Jacuzzi, Bar/pub, Library, Assisted bathing facility, woodwork room

Services..... Extra Care scheme with on-site care staff (24 hours / 7 days), Non-resident management staff (24 hours, 7 days) and Careline alarm service

Accessibility.... Whole site accessible by wheelchair. Access to site easy. Distances: bus stop 200 yards; shop 250 yards; post office 1 mile(s); town centre 1 mile(s); GP 1 mile(s).

Lifestyle..... Regular social activities include: Up to 10 activities per day lead by own team, organised by Village Activity Facilitator. Meal(s) available (restaurant on site). New residents accepted from 55 years of age. Both cats & dogs generally accepted, but not

Tenure(s)..... Tenure(s): Rent (social landlord) and Shared Ownership and Leasehold

Manager..... Fortis Living, Tel: 01684 579627

Manager's notes: The scheme is a partnership between Herefordshire Council, Primary Care Trust and Fortis Living. It aims to promote a way of life that gives choice and opportunity for all those who live there, with planned on-site facilities to include a restaurant and

Hertfordshire

Dacorum

BERKHAMSTED

CASTLE VILLAGE

Berkhamsted, Hertfordshire, HP4
2GS



150 flats, bungalows, cottages. Built in 2000. Sizes 2 bedroom, 3 bedroom. Includes mobility and wheelchair standard properties.

Facilities..... Lift, Stair lift(s), Lounge, Dining room, Laundry, Guest facilities, Garden, Conservatory, Hobby room, Activities room, Shop, Bar/pub, Library, snooker room, tennis court, croquet & putting green

Services..... Non-resident management staff and Careline alarm service

Accessibility.... Whole site accessible by wheelchair. Access to site easy, but less so for less mobile people. Distances: post office 1.5 mile(s); town centre 1 mile(s).

Lifestyle..... Regular social activities include: many on-site and off-site events, organised by Castle Village Residence Association. Meal(s) available (lunch 3 or 4 times a week). New residents accepted from 55 years of age. Both cats & dogs generally accepted (depe

Tenure(s)..... Tenure(s): Leasehold

Manager..... Retirement Villages Group Ltd, Tel: 01372 383 950

Manager's notes: atle Village is an established community for the over 55's. The 28-acre site is set within an Area of Outstanding Natural Beauty managed by the National Trust.

The village comprises of 150 privately owned properties including cottages, bungalows and

BERKHAMSTED

AUDLEY BERKHAMSTED

Bank Mill Lane, Berkhamsted,
Hertfordshire, HP4 2NT

111 flats, cottages. Built in 2022.

Facilities..... Lounge, Restaurant open to the public, Garden

Services..... Retirement Village scheme with on-site care staff (24 hours / 7 days), Non-resident management staff

Accessibility....

Lifestyle.....

Tenure(s)..... Tenure(s): Leasehold

Manager..... Audley Villages, Tel: 0800 093 8181

Hertfordshire

East Hertfordshire

SAWBRIDGEWORTH

ORCHARD LEA RETIREMENT VILLAGE

High Wych Road,
Sawbridgeworth, Herts, CM21
0AB



22 flats, bungalows. Built in 1992. Sizes 1 bedroom, 2 bedroom. Includes mobility and wheelchair standard properties.

Facilities..... Lift, Lounge, Restaurant open to the public, Garden

Services..... Non-resident management staff (7 days) and Careline alarm service

Accessibility.... Access to site easy. Distances: bus stop 200 yards; shop 1 mile(s); post office 1 mile(s); town centre 1 mile(s); GP 1 mile(s); social centre 1 mile(s).

Lifestyle..... Regular social activities include: coffee evenings, exercise classes, occasional social events. Meal(s) available (lunch daily). New residents accepted from 55 years of age. Both cats & dogs generally accepted.

Tenure(s)..... Tenure(s): Leasehold

Manager..... Ramsay Health Care UK, Tel: 01279 602 600

Manager's notes: Village designed for independent people but with support available; managed on a hotel type basis. 20 acre site, with further development planned.

Linked care home

- **THE GARDENS NURSING HOME High Wych Road, Sawbridgeworth, Hertfordshire CM21 0HH**

Home type . . . Care home with nursing

Care for Older people generally / People with physical difficulties

Description . . This home accommodates 54 residents in 42 single and 5 shared rooms (47 en suite). It was purpose built and has a garden.

Contact Capio Healthcare Ltd. Tel. 01279 600201

Hertfordshire

Three Rivers

CHORLEYWOOD

CEDARS VILLAGE

Chorleywood, Finch Green,
Chorleywood, Herts, WD3 5GL



153 flats, bungalows, cottages. Built in 1995. Sizes 1 bedroom, 2 bedroom, 3 bedroom. Includes mobility and wheelchair standard properties.

Facilities..... Lift, Lounge, Dining room, Laundry, Guest facilities, Garden, Conservatory, Community centre, Cafe, Shop, Bar/pub, Library, snooker room

Services..... Non-resident management staff (24 hours)

Accessibility.... Whole site accessible by wheelchair. Access to site easy, but less so for less mobile people. Distances: bus stop 10 yards; shop 10 yards; post office 10 yards; town centre 1.5 mile(s); GP 10 yards; social centre 4 mile(s).

Lifestyle..... Regular social activities include: Croquet, museum visits, coffee mornings, film shows, music evenings, organised by Residents Association. Meal(s) available. New residents accepted from 60 years of age. Both cats & dogs generally accepted.

Tenure(s)..... Tenure(s): Leasehold

Manager..... Retirement Villages Group Ltd, Tel: 01372 383 950

Manager's notes: Cedars Village is a busy community for the over 60s set in 22 acres of landscaped gardens and natural woodlands with easy access of London and national transport links.

The 153 properties offer independent living and include apartments with original fe

Highland

Highland

INVERGORDON

**HIGHLAND PARK PRIVATE
RETIREMENT VILLAGE**
Barbaraville, Invergordon, Ross-
Shire, IV18 0ND



50 flats, bungalows. Built in 2006. Sizes 1 bedroom, 2 bedroom.
Includes wheelchair standard properties.

Facilities..... Garden, Community centre

Services..... Careline alarm service

Accessibility....

Lifestyle..... New residents accepted from 55 years of age.

Tenure(s)..... Tenure(s): Ownership

Manager..... Highland Kin Ltd, Tel: 0845 223 8361

Manager's notes: Highland Park is being developed as a purpose
built private retirement village exclusively for the over 55

NAIRN

FIRHALL VILLAGE
Cawdor Road, Nairn, Nairnshire,
IV12 5QU



93 flats, bungalows, cottages. Built in 2003. Sizes 2 bedroom, 3
bedroom.

Facilities..... Lounge, Garden, Community centre

Services..... (part time)

Accessibility.... Access to site easy, but less so for less mobile
people. Distances: bus stop 100 yards; shop 2
mile(s); post office 2 mile(s); town centre 2
mile(s); GP 2 yards.

Lifestyle..... New residents accepted from 45 years of age.
Cats only generally accepted.

Tenure(s)..... Tenure(s): Ownership

Manager..... Firhall Village Trust, Tel:

Manager's notes: The village is on the banks of the River Nairn
and provides secure living in a unique concept village, laid out in
landscaped mature parkland. The fine public rooms on the
ground floor of the main house provide 'country clubhouse'
facilities to include a

Isle of Man

Isle of Man

DOUGLAS

SADDLE MEWS VILLAGE
The Lodge, New Castletown
Road, Douglas, Isle of Man, IM2
1JB



36 flats. Sizes 1 bedroom, 2 bedroom.

Facilities..... Garden

Services..... Non-resident management staff and Careline
alarm service

Accessibility....

Lifestyle..... New residents accepted from 50 years of age.

Tenure(s)..... Tenure(s): Leasehold

Manager..... Owner/manager not known, Tel: 01624 625 400

Manager's notes: For further information, please contact the
Warden on 01624 625 400, or local estate agents

Isle of Wight

Isle of Wight

RYDE VILLAGE

RYDE VILLAGE

Woodland View, off Ashley Road, Ryde, Isle of Wight, PO33 2DG



102 flats, bungalows. Built in 2020. Sizes 1 bedroom, 2 bedroom.

Facilities..... Lounge, Laundry, Garden, Shop, Hairdressing salon, Assisted bathing facility

Services..... Extra Care scheme with on-site care staff (24 hours / 7 days), Non-resident management staff

Accessibility....

Lifestyle..... New residents accepted from 55 years of age.

Tenure(s)..... Tenure(s): Rent (social landlord) and Shared Ownership (OPSO)

Manager..... Southern Housing Group, Tel: 0300 303 1684 option 3

Manager's notes: Ryde Village is the first of our one-of-a-kind extra care schemes on the Isle of Wight tailored to residents with support needs. Over 55s can live in a peaceful environment with the knowledge that there is a Wellbeing Team available 24 hours a day, should

Kent

Maidstone

MOTE PARK

AUDLEY MOTE HOUSE

Mote Park, Bearsted, Maidstone, Kent, ME15 8GA



101 flats, cottages. Built in 2008. Sizes 1 bedroom, 2 bedroom.

Facilities..... Lift, Lounge, Dining room, Restaurant open to the public, Guest facilities, Garden, Cafe, Hairdressing salon, Swimming pool, Library, Bar

Services..... Luxury Retirement Villag scheme with on-site care staff (24 hours / 7 days), Resident management staff, Visiting management staff (24 hours, 7 days) and Careline alarm service

Accessibility.... Whole site accessible by wheelchair. Access to site easy. Distances: bus stop 0.5 mile(s); shop 0.3 mile(s); post office 1 mile(s); town centre 2 mile(s); GP 1 mile(s).

Lifestyle..... Regular social activities include: Film club, quiz nights, supper clubs, craft club, and bridge club, organised by Village Manager and owners. New residents accepted from 55 years of age. Both cats & dogs generally accepted, but not to be replaced (Pet f

Tenure(s)..... Tenure(s): Leasehold

Manager..... Audley Villages, Tel: 01622 633215

Manager's notes: Situated in Mote Park, Mote House consists of a total of 101 cottages and apartments set within 450 acres of parkland. The main building is the original Mote House, a Grade 11-listed Georgian mansion, which contains our exclusive Audley Club.

This his

Kent

Sevenoaks

DARENTH

SOUTHDOWN'S RETIREMENT VILLAGE
South Darenth, Dartford, Kent,
DA4 9LG



198 flats, bungalows. Built in 2010. Sizes 1 bedroom, 2 bedroom.

Facilities..... Lounge, Laundry, Guest facilities, Garden, Shop, Bar/pub

Services..... Non-resident management staff (24 hours) and Careline alarm service

Accessibility....

Lifestyle..... Regular social activities, organised by There is a social committee which arranges social events, both on and off site..

Tenure(s)..... Tenure(s): Leasehold and

Manager..... Southdown's Retirement Homes, Tel: 01322 862 992

Manager's notes: Southdown's Retirement Village is set in 17.5 acres of greenbelt in beautiful, rural Kent and offers immediate access to the countryside whilst retaining the charms of village life in its own community. From the moment you set foot in Southdown's, you will

Kent

Tonbridge & Malling

AYLESFORD

QUEEN ELIZABETH COURT
Aylesford, Maidstone, Kent,
ME20 7NL



40 flats. Built in 2005. Sizes 1 bedroom, 2 bedroom. Includes mobility and wheelchair standard properties.

Facilities..... Lift, Lounge, Dining room, Restaurant open to the public, Laundry, Guest facilities, Garden

Services..... Assisted Living scheme with on-site care staff (part time, 7 days) and Careline alarm service

Accessibility.... Access to site easy. Distances: bus stop 50 yards; shop 0.25 mile(s); post office 1 mile(s); town centre 2.5 mile(s); GP 0.25 mile(s).

Lifestyle..... Scheme for, or of particular interest to: ex-service personnel and their dependents. Regular social activities. Meal(s) available (Lunch in the café (cost purchase)). New residents accepted from 55 years of age.

Tenure(s)..... Tenure(s): Rent (social landlord)

Manager..... Royal British Legion Industries, Tel: 01622 795 900

Manager's notes: The building has won an award from Tonbridge and Malling council for its design and innovation. In a lovely Parkland setting with mature trees and gardens, the scheme is designed to enable people 65 years and over who require personal care from a care pro

WEST MALLING

NEW RETIREMENT VILLAGE
237-259 London Road, West
Malling, Kent, ME19 5AD



79 flats. Built in 2022.

Facilities.....

Services..... Retirement Village scheme with on-site care staff, Non-resident management staff

Accessibility....

Lifestyle.....

Tenure(s)..... Tenure(s): Leasehold

Manager..... Retirement Villages Group Ltd, Tel: 01372 383 950

Kent

Tunbridge Wells

TUNBRIDGE WELLS

AUDLEY WILLICOMBE HOUSE
Willicombe Park, Pembury Road,
Tunbridge Wells, Kent, TN2 3UU



67 flats, bungalows, cottages. Built in 1999. Sizes 1 bedroom, 2 bedroom, 3 bedroom. Includes mobility and wheelchair standard properties.

Facilities..... Lift, Lounge, Dining room, Restaurant open to the public, Guest facilities, Garden, Hairdressing salon, Swimming pool, Bar/pub, Library, Assisted bathing facility, restaurant, bistro, spa, private dining available

Services..... Retirement Living scheme with on-site care staff (24 hours / 7 days), Visiting management staff, Non-resident management staff (24 hours, 7 days) and Careline alarm service

Accessibility.... Whole site accessible by wheelchair. Access to site easy, but less so for less mobile people. Distances: bus stop 50 yards; shop 0.5 mile(s); post office 1.5 mile(s); town centre 1.5 mile(s); GP 0.5 mile(s).

Lifestyle..... Regular social activities include: Social clubs/events and meals, exercise pool and gym facilities, organised by Village Manager. Meal(s) available (restaurant dining and bistro for light meals on site). New residents accepted from 60 years of age. Both

Tenure(s)..... Tenure(s): Leasehold

Manager..... Audley Villages, Tel: 01892 457996 (sales)

Manager's notes: This friendly community consists of 67 apartments, penthouses, bungalows, cottages and lodges set in four acres of landscaped gardens around a Victorian villa. The villa itself, Willicombe House, was originally built by William Willicombe in the 1870's. I

Lancashire

Blackburn with Darwen

BEARDWOOD

LARMENIER RETIREMENT VILLAGE
Preston New Road, Blackburn,
Lancashire, BB2 7AL



72 flats, bungalows. Built in 1985 and renovated in 2013. Sizes 1 bedroom, 2 bedroom, 3 bedroom.

Facilities..... Lift, Lounge, Dining room, Laundry, Guest facilities, Garden, Conservatory, Community centre, Hobby room, Activities room, Cafe, Hairdressing salon, Bar/pub, Library, Assisted bathing facility, cinema, chapel, visiting doctors surgery, allotment area, BBQ

Services..... Assisted Living scheme with on-site care staff (24 hours / 7 days), Non-resident management staff (24 hours, 7 days)

Accessibility.... Whole site accessible by wheelchair. Access to site easy, but less so for less mobile people. Distances: bus stop 50 yards; shop 2 mile(s); post office 2 mile(s); town centre 4 mile(s); GP 0.5 mile(s).

Lifestyle..... Regular social activities include: Minibus excursions, craft classes, Bridge & Scrabble, film nights, quizzes, and exercise classes, organised by residents committee and management staff. Meal(s) available (3 course lunch available daily). New residents

Tenure(s)..... Tenure(s): Leasehold and Rent (market)

Manager..... Nazareth Care Charitable Trust, Tel: 020 8444 4427

Manager's notes: Welcome to the first of the new style Nazareth villages taking retirement living to a new level. With its close association with the Sisters of Nazareth, Larmenier Retirement Village offers you independent living modelled on the Sisters' core values of di

Lancashire

Chorley

BUCKSHAW VILLAGE

THE GRANGE ASSISTED LIVING

Buckshaw Retirement Village,
Oakbridge Drive, Chorley,
Lancashire, PR7 7EJ



78 flats. Built in 2008. Sizes studio, 1 bedroom.

Facilities..... Lift, Lounge, Restaurant open to the public, Garden, Hobby room, Activities room, Shop, Hairdressing salon, Bar/pub, Library, Assisted bathing facility, wellness suite and computer lounge

Services..... Assisted Living scheme with on-site care staff (24 hours / 7 days), Non-resident management staff (part time, 24 hours, 7 days) and Careline alarm service

Accessibility.... Whole site accessible by wheelchair. Access to site easy. Distances: bus stop 0.25 mile(s); shop 0.25 mile(s); post office 0.25 mile(s); town centre 3 mile(s); GP 0.25 mile(s); social centre 0.25 mile(s).

Lifesytle..... Regular social activities include: There is a 7 day activity programme, organised by On-site staff. New residents accepted from 55 years of age.

Tenure(s)..... Tenure(s): Rent (market)

Manager..... HICA Group, Tel: 01482 581000

Manager's notes: The Grange is a truly modern alternative to more traditional retirement solutions where life is as relaxed or as active as you want it to be. An award winning environment, with our highly trained support team available 24 hours a day will give you and you

Linked care home

- **THE LODGE - DEMENTIA CARE WITH NURSING** Buckshaw Retirement Village, Oakbridge Drive, Chorley, Lancashire PR7 7EP

Home type . . . Care home with nursing

Care for Older people generally / People with dementia

Description . . This home accommodates 64 residents. It was purpose built in 2008.

Contact Oakbridge Retirement Villages. Tel. 01772 625 000

Lancashire

Chorley

EUXTON

THE COURT INDEPENDENT LIVING

Buckshaw Retirement Village,
Central Avenue, Euxton,
Chorley, Lancashire, PR7 7EH



78 flats. Built in 2008. Sizes 1 bedroom, 2 bedroom.

Facilities..... Lift, Lounge, Restaurant open to the public, Guest facilities, Garden, Activities room, Cafe, Shop, Hairdressing salon, Bar/pub, Library, Assisted bathing facility, IT suite, bowling green

Services..... Non-resident management staff (24 hours, 7 days) and Careline alarm service

Accessibility.... Whole site accessible by wheelchair. Access to site easy. Distances: bus stop 0.25 mile(s); shop 0.25 mile(s); post office 0.25 mile(s); town centre 3 mile(s); GP 20 yards; social centre 20 yards.

Lifesytle..... Regular social activities include: Regular social activities are organised by The Court Residents Association. In addition the following activities within the assisted living facility can be accessed at a small cost: chair based exercise, weight manegeme

Tenure(s)..... Tenure(s): Leasehold

Manager..... HICA Group, Tel: 01482 581000

Linked care home

- **THE LODGE - DEMENTIA CARE WITH NURSING** Buckshaw Retirement Village, Oakbridge Drive, Chorley, Lancashire PR7 7EP

Home type . . . Care home with nursing

Care for Older people generally / People with dementia

Description . . This home accommodates 64 residents. It was purpose built in 2008.

Contact Oakbridge Retirement Villages. Tel. 01772 625 000

Leicestershire

Hinckley & Bosworth

BOTCHESTON

KIRBY GRANGE RETIREMENT VILLAGE
Spinney Drive, Markfield Lane,
Botcheston, Leicester, LE9 9FG



88 bungalows. Built in 1990. Sizes 2 bedroom.

Facilities..... Lounge, Guest facilities

Services..... Careline alarm service

Accessibility....

Lifestyle.....

Tenure(s)..... Tenure(s): Leasehold

Manager..... Owner/manager not known, Tel:

Manager's notes: Please contact estate agents for any available properties to purchase.

MARKFIELD

MARKFIELD RETIREMENT VILLAGE
c/o The Social Centre, Ratby
Lane, Markfield, Leicestershire,
LE67 9RJ



123 flats, bungalows. Built in 1986. Sizes 1 bedroom, 2 bedroom.

Facilities..... Lounge, Guest facilities, Garden, Activities room,
Bar/pub, Library

Services..... Non-resident management staff and Careline
alarm service

Accessibility....

Lifestyle..... New residents accepted from 55 years of age.

Tenure(s)..... Tenure(s): Leasehold

Manager..... Ward Surveyors, Tel: 01530 244 930

Manager's notes: Markfield Retirement Village offers independent living and the company of others. The village is situated in 21 acres of beautifully well-maintained landscaped gardens in the heart of rural Leicestershire. Purpose designed and built in 1986 for the over 5

Leicestershire

Rutland

RUTLAND CARE VILLAGE

RUTLAND CARE VILLAGE
Huntsman Drive, Oakham,
Leicestershire, LE15 6QT



24 bungalows. Built in 2006. Sizes 1 bedroom, 2 bedroom.

Facilities.....

Services..... Close Care scheme with Non-resident
management staff

Accessibility....

Lifestyle.....

Tenure(s)..... Tenure(s): Rent (market) and Leasehold

Manager..... Prime Life Ltd, Tel: 0116 270 5678

Manager's notes: The site comprises 3 separate care homes with nursing and dementia care packages available, together with the Brambles Social Centre and 26 cottages in the grounds, the occupants of which can enjoy a high level of support delivered direct to their own home

Linked care home

● **RUTLAND CARE VILLAGE Huntsman Drive, Oakham LE15 6RP**

Home type . . . Care home with nursing

Care for Older people generally / People with physical difficulties /
People with a mental disability / People with dementia

Description . . This home accommodates 82 residents in 82 single rooms
(82 en suite). It was purpose built and has a garden.

Contact Prime Life Ltd. Tel. 01572 722 350

Lincolnshire

Boston

BOSTON

PARK PLACE
90 Sleaford Road, Boston,
Lincolnshire, PE21 8EY



28 flats. Built in 1989. Sizes 2 bedroom.

Facilities..... Lounge, Dining room, Laundry, Garden, Community centre, Hobby room, Activities room, Hairdressing salon

Services..... on-site care staff (24 hours / 7 days), Non-resident management staff (24 hours) and Careline alarm service

Accessibility.... Access to site easy, but less so for less mobile people. Distances: bus stop 500 yards; shop 300 yards; post office 1 mile(s); town centre 1 mile(s); GP 800 yards; social centre 1 mile(s).

Lifestyle..... social activities include: There is a full programme of activities and social occasions, organised by Activities Co-ordinator. Meal(s) available. New residents accepted from 55 years of age. Both cats & dogs generally accepted (Only after consultation)

Tenure(s)..... Tenure(s): Leasehold

Manager..... Retirement Villages Group Ltd, Tel: 01372 383 950

Manager's notes: Park Place has a range of living options to suit every requirement. There are 28 two bedroom apartments, privately owned by residents who can tap into village life as and when they choose. The Gardens is a 47 bed residential home offering a level of supp

Linked care home

- **THE GARDENS RESIDENTIAL HOME 88 Sleaford Road, Boston, Lincolnshire PE21 8EY**

Home type .. Care home

Care for Older people generally / People with dementia

Description .. This home accommodates 47 residents.

Contact HC-One. Tel. 01205 359797

Lincolnshire

North East Lincolnshire

GRIMSBY

**CARRINGTON GARDENS
RETIREMENT VILLAGE**
Humberston Avenue,
Humberston, Grimsby, South
Humberside, DN36 4SU



200 flats, bungalows. Built in 2017. Sizes 1 bedroom, 2 bedroom.

Facilities..... Lounge, Guest facilities, Garden, kitchen

Services..... Non-resident management staff

Accessibility....

Lifestyle..... New residents accepted from 55 years of age.

Tenure(s)..... Tenure(s): Leasehold

Manager..... Longhurst Group, Tel: 0300 123 1745

Manager's notes: The first 10 luxury bungalows of a new Keystone development have been reserved, following a recent marketing event that attracted over 100 visitors. Carrington Gardens is a 40-acre, 400-property development being built on Humberston Avenue in Humberston

West Lindsey

TORKSEY

THE ELMS
Torskey Lock, Lincoln,
Lincolnshire, LN1 2EH



50 cottages. Built in 1987. Sizes 2 bedroom, 3 bedroom.

Facilities.....

Services.....

Accessibility....

Lifestyle..... New residents accepted from 50 years of age.

Tenure(s)..... Tenure(s): Leasehold

Manager..... Kinvena Homes Limited, Tel: 01427 718 243

Manager's notes: Retire to a luxury home in our exclusive private family-run development of holiday-style timber homes, with 10 acres of protected Parkland, 3 lakes and adjoining canal. With a security barrier controlling access, The Elms offers you the opportunity to re

Merseyside

St Helens

HAYDOCK

HEYESWOOD RETIREMENT VILLAGE

Heyes Avenue, Haydock, St. Helens, Merseyside, WA11 0XQ



92 flats. Built in 2009. Sizes 1 bedroom, 2 bedroom.

Facilities..... Lift, Lounge, Dining room, Laundry, Guest facilities, Garden, Activities room, Cafe, Hairdressing salon, Assisted bathing facility, Computers in activities room

Services..... Extra Care scheme with on-site care staff (24 hours / 7 days), Non-resident management staff and Careline alarm service

Accessibility.... Whole site accessible by wheelchair.

Lifestyle..... Meal(s) available. New residents accepted from 55 years of age.

Tenure(s)..... Tenure(s): Rent (social landlord) and Shared Ownership and Leasehold

Manager..... Your Housing Limited, Tel: 01925 593 500

Manager's notes: For further information you can contact Peter Davies, Heyeswood Manager on 01925 298 300

All our Retirement living developments provide fabulous communal accommodation with bistro, hobby/craft room, residents lounge, and assisted bathroom. The modern

Merseyside

St Helens

NEWTON-LE-WILLOWS

HEALD FARM COURT

Sturgess Street, Earlestown, Newton-le-Willows, Merseyside, WA12 9HN



89 flats, bungalows. Built in 2009. Sizes 2 bedroom.

Facilities..... Lift, Lounge, Dining room, Restaurant open to the public, Laundry, Guest facilities, Garden, Activities room, Cafe, Hairdressing salon, Assisted bathing facility

Services..... Extra Care scheme with on-site care staff (24 hours / 7 days), Non-resident management staff and Careline alarm service

Accessibility.... Whole site accessible by wheelchair. Access to site easy, but less so for less mobile people. Distances: bus stop 40 yards; shop 0.2 mile(s); post office 0.2 mile(s); town centre 0.3 mile(s); GP 0.2 mile(s); social centre 3.1 mile(s).

Lifestyle..... Regular social activities include: weekly what's on list of activities, organised by Scheme Activity Co-ordinator. Meal(s) available. New residents accepted from 55 years of age. Dogs only generally accepted, but not to be replaced (Risk assessment is r

Tenure(s)..... Tenure(s): Rent (social landlord) and Leasehold and Shared Ownership

Manager..... Torus Group, Tel: 01744 637 383

Manager's notes: In a joint venture with Helena Extra, MHA provides a new opportunity for independent living, together with the availability of round-the clock care, in Newton-le-Willows, part of the borough of St Helens.

The 14 million pound Heald Court Farm scheme c

Merseyside

St Helens

RAINHILL

REEVE COURT RETIREMENT VILLAGE

Elton Head Road, Rainhill, St. Helens, Merseyside, WA9 5ST



206 flats, bungalows. Built in 2004. Sizes 1 bedroom, 2 bedroom.

Facilities..... Lift, Lounge, Restaurant open to the public, Laundry, Guest facilities, Garden, Activities room, Cafe, Shop, Hairdressing salon, Bar/pub, Library

Services..... Retirement Village scheme with on-site care staff (24 hours / 7 days), Non-resident management staff (24 hours, 7 days) and Careline alarm service

Accessibility.... Whole site accessible by wheelchair. Access to site easy. Distances: bus stop 0.5 mile(s); shop 2 mile(s); post office 2 mile(s); town centre 4 mile(s); GP 2 mile(s); social centre 4 mile(s).

Lifestyle..... Regular social activities. Meal(s) available. New residents accepted from 55 years of age. Both cats & dogs generally accepted (with permission).

Tenure(s)..... Tenure(s): Leasehold and Rent (social landlord) and Shared Ownership

Manager..... The ExtraCare Charitable Trust, Tel: 0151 430 4000

Manager's notes: We have 206 homes and over 250 residents. Approximately a third of residents within the Village receive help with their care. Dependent on individual circumstances we can support residents with significant assessed care needs, including dementia. Any pers

Monmouthshire

Monmouthshire

MONMOUTH

GIBRALTAR CARE VILLAGE

Almeida Mews & Catalan Court, Portal Road, Monmouth, Gwent, NP25 5FB



36 flats, cottages. Built in 2009. Sizes 2 bedroom.

Facilities..... Lounge, Dining room, Restaurant open to the public, Laundry, Garden, Activities room, Cafe, Hairdressing salon, Swimming pool, Library, cinema

Services..... Non-resident management staff and Careline alarm service

Accessibility.... Whole site accessible by wheelchair. Access to site easy. Distances: bus stop 400 yards; shop 1 mile(s); post office 1 mile(s); town centre 1 mile(s); GP 1 mile(s); social centre 1 mile(s).

Lifestyle..... social activities include: Our close care residents are encouraged/assisted to arrange social activities, organised by residents and Lodge Manager. New residents accepted from 55 years of age. Both cats & dogs generally accepted, but not to be replaced.

Tenure(s)..... Tenure(s): Rent (market)

Manager..... PSP Care Villages Ltd, Tel: 0117 982 2919

Norfolk

Norwich

BISHOPGATE

GREAT HOSPITAL

Bishopgate, Norwich, NR1 4EL



98 flats, bungalows. Built in 1249 and renovated in 2012. Sizes studio, 1 bedroom, 2 bedroom. Includes mobility and wheelchair standard properties.

Facilities..... Lift, Lounge, Dining room, Laundry, Guest facilities, Garden

Services..... Extra Care scheme with on-site care staff (24 hours / 7 days)

Accessibility.... Access to site easy, but less so for less mobile people. Distances: bus stop 50 yards; post office 500 yards; town centre 1.5 mile(s).

Lifestyle..... This almshouse charity caters for: people with strong connections with Norwich. Frequent social activities, organised by staff and residents. Meal(s) available. New residents accepted from 60 years of age.

Tenure(s)..... Tenure(s): Rent (social landlord)

Manager..... Great Hospital, Tel: 01603 622 022

Manager's notes: The Great Hospital offers 98 residential properties set in beautiful grounds in the heart of Norwich. All accommodation is maintained to the highest standards and equipped with emergency call alarms connected directly to the care team.

The Great Hospi

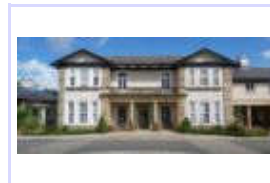
North Yorkshire

Harrogate

HAMPSTHWAITE

HOLLINS HALL

Lund Lane, Hampsthwaite, Harrogate, North Yorkshire, HG3 2BQ



71 flats, bungalows, cottages. Built in 2000. Sizes 1 bedroom, 2 bedroom. Includes mobility and wheelchair standard properties.

Facilities..... Lift, Lounge, Dining room, Restaurant open to the public, Guest facilities, Garden, Hairdressing salon, Swimming pool, Bar/pub, Library, restaurant, bistro, spa

Services..... Retirement Living scheme with on-site care staff (24 hours / 7 days), Non-resident management staff (24 hours, 7 days) and Careline alarm service

Accessibility.... Whole site accessible by wheelchair. Access to site easy, but less so for less mobile people. Distances: bus stop 0.5 mile(s); shop 3 mile(s); post office 3 mile(s); town centre 3 mile(s); GP 3 mile(s); social centre 3 mile(s).

Lifestyle..... Regular social activities include: Events, meetings, talks, and special events, organised by General Manager. Meal(s) available (dining room for meals & snacks, home delivery service). New residents accepted from 60 years of age. Both cats & dogs genera

Tenure(s)..... Tenure(s): Leasehold

Manager..... Hollins Hall, Tel: 01423 875 333

Manager's notes: Hollins Hall retirement village in Harrogate, set in 14 acres of landscaped gardens on the edge of the Yorkshire Dales, is an imposing example of a late Georgian manor house. Once the home of the famous Tetley family, Hollins Hall is now the hub of a thri

North Yorkshire

Harrogate

RIPON

THE RED HOUSE

41 Palace Road, Ripon, North
Yorkshire, HG4 1FA



59 flats, cottages. Built in 2018. Sizes 1 bedroom, 2 bedroom.

Facilities..... Lift, Lounge, Dining room, Guest facilities,
Garden, Hobby room, Activities room,
Hairdressing salon, Bar/pub, Library, Drawing
room

Services..... Extra Care Retirement scheme with Non-resident
management staff (24 hours, 7 days) and
Careline alarm service

Accessibility....

Lifestyle..... New residents accepted from 55 years of age.

Tenure(s)..... Tenure(s): Leasehold

Manager..... Enterprise Retirement Living, Tel: 01223 835 995

Manager's notes: Village life at The Red House can be as relaxed or as active as you choose, with an excellent range of facilities offering every opportunity for a full and varied retirement. Read the daily papers or settle in with a book in the library. Enjoy lunch in th

North Yorkshire

Ryedale

PICKERING

MICKLE HILL RETIREMENT VILLAGE

Malton Road, Pickering, North
Yorkshire, YO18 7NB



168 flats, bungalows. Built in 2016 and renovated in 2018. Sizes 1 bedroom, 2 bedroom. Includes mobility and wheelchair standard properties.

Facilities..... Lift, Lounge, Dining room, Guest facilities,
Garden, Activities room, Cafe, Shop,
Hairdressing salon, Jacuzzi, Bar/pub, Library,
Assisted bathing facility, cinema, greenhouse,
parking facilities

Services..... Retirement Village scheme with 24 hours / 7
days), Visiting management staff (visiting), Non-
resident management staff (24 hours) and
Careline alarm service

Accessibility.... Whole site accessible by wheelchair. Access to
site easy. Distances: bus stop 50 yards; shop
0.6 mile(s); post office 0.6 mile(s); town centre
0.6 mile(s); GP 0.8 mile(s); social centre 1.9
mile(s).

Lifestyle..... social activities, organised by our Activities Co-
ordinator and residents. Meal(s) available (In
dining room or home delivery). New residents
accepted from 60 years of age. Both cats & dogs
generally accepted (Pet passport required and
risk assessment)

Tenure(s)..... Tenure(s): Leasehold

Manager..... MHA, Tel: 01332 296 200

Manager's notes: Mickle Hill offers a fresh approach to retirement living - a selection of beautifully designed two bed bungalows and one and two bed apartment with thoughtful and practical touches set in landscaped grounds for people over 60 who want to live life to the

North Yorkshire

Scarborough

WOODLANDS VALE

PLAXTON COURT

Woodlands Drive, Woodlands
Vale, Scarborough, North
Yorkshire, YO12 6QT



69 flats, cottages. Built in 2008. Sizes 1 bedroom, 2 bedroom, 3 bedroom.

Facilities..... Lounge, Restaurant open to the public, Laundry, Garden, Cafe, Shop, Hairdressing salon, healthy activity centre

Services..... An Extra Care Community scheme with on-site care staff (24 hours / 7 days), Non-resident management staff and Careline alarm service

Accessibility....

Lifestyle..... Regular social activities. New residents accepted from 55 years of age.

Tenure(s)..... Tenure(s): Rent (social landlord) and Shared Ownership and Ownership

Manager..... The Joseph Rowntree Housing Trust, Tel: 0800 587 0211

Manager's notes: Plaxton Court is less than two miles from the centre of Scarborough. This makes it handy for accessing the town's many facilities and the promenade. Set in its own grounds, it enjoys an idyllic position. It has panoramic views over the local countryside a

North Yorkshire

York

NEW EARSWICK

HARRIGG OAKS

Lucombe Way, Haxby Road,
New Earswick, York, YO32 4DS



152 bungalows. Built in 1999. Sizes 1 bedroom, 2 bedroom. Includes mobility and wheelchair standard properties.

Facilities..... Lounge, Dining room, Garden, Hobby room, Activities room

Services..... Continuing Care scheme with on-site care staff (24 hours / 7 days), Resident management staff

Accessibility....

Lifestyle..... Meal(s) available (lunch and evening meals). New residents accepted from 60 years of age.

Tenure(s)..... Tenure(s): Leasehold

Manager..... The Joseph Rowntree Housing Trust, Tel: 0800 587 0211

Manager's notes: Hartrigg Oaks is a retirement village, which has been based on the Continuing Care Retirement Community model. It is aimed at supporting people aged 60 plus to maintain their independence throughout later life in a vibrant and stimulating environment. It

Linked care home

- **THE OAKS CARE CENTRE Hartrigg Oaks, Haxby Road, New Earswick, York YO32 4DY**

Home type . . . Care home with nursing

Care for Older people generally

Description . . This home accommodates 42 residents in 42 single rooms (42 en suite). It was purpose built and has a garden. Facilities are available for family or friends to stay overnight.

Contact The Joseph Rowntree Housing Trust. Tel. 01723 340290

Northamptonshire

Northampton

CHAPEL BRAMPTON

BRAMPTON VIEW CARE VILLAGE

Brampton Valley Lane, Chapel Brampton, Northampton, NN6 8GB



34 flats, bungalows. Built in 2008. Sizes 1 bedroom, 2 bedroom.

Facilities..... Lift, Lounge, Restaurant open to the public, Garden

Services..... Close Care scheme with Non-resident management staff (24 hours) and Careline alarm service

Accessibility....

Lifestyle.....

Tenure(s)..... Tenure(s): Leasehold

Manager..... Four Seasons Health Care Ltd, Tel: 01625 417 800

Manager's notes: Construction is shortly to commence on a care home and small care village on a site close to Chapel Brampton to the rear of the Windhover, a well known pub and restaurant. The home will provide care for older people with personal care and nursing needs an

Linked care home

- **BRAMPTON VIEW CARE HOME Brampton Lane, Chapel Brampton, Northampton NN6 8AA**

Home type .. Care home with nursing

Care for Older people generally / People with physical difficulties / People with dementia

Description . . This home accommodates 88 residents in 88 single rooms (88 en suite).

Contact Barchester Healthcare Ltd. Tel. 01604 850 700

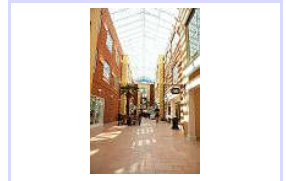
Northamptonshire

Northampton

DUSTON VILLAGE

ST CRISPIN VILLAGE

St Thomas Street, Off St Crispin Drive, Duston, Northampton, Northamptonshire, NN5 4RB



270 flats, bungalows. Built in 2006. Sizes 1 bedroom, 2 bedroom.

Facilities..... Lift, Lounge, Dining room, Laundry, Guest facilities, Garden, Hobby room, Activities room, Cafe, Shop, Hairdressing salon, Jacuzzi, Bar/pub, Library, Assisted bathing facility, village hall, billiards room, IT suite, well being room

Services..... Extra Care scheme with on-site care staff (24 hours / 7 days), Non-resident management staff (24 hours, 7 days) and Careline alarm service

Accessibility.... Whole site accessible by wheelchair. Access to site easy. Distances: bus stop 100 yards; post office 1 mile(s); town centre 3 mile(s); GP 1 mile(s).

Lifestyle..... Regular social activities include: 10 activities per day, organised by staff and residents. Meal(s) available (on site restaurant). New residents accepted from 60 years of age. Both cats & dogs generally accepted.

Tenure(s)..... Tenure(s): Rent (social landlord) and Shared Ownership and Leasehold

Manager..... Midland Heart, Tel: 0345 60 20 540

Manager's notes: This village development is a partnership between Touchstone Housing Association, Northampton Borough Council, Northamptonshire County Council and The ExtraCare Charitable Trust. It is home to more than 300 local older people and will also be used by hund

Northamptonshire

Northampton

GRANGE PARK

RICHMOND NORTHAMPTON
Bridge Meadow Way, Grange
Park, Northampton,
Northamptonshire, NN4 5EB



92 flats. Built in 2007. Sizes 1 bedroom, 2 bedroom.

Facilities..... Lift, Stair lift(s), Lounge, Dining room, Restaurant open to the public, Laundry, Guest facilities, Garden, Community centre, Hobby room, Activities room, Cafe, Shop, Hairdressing salon, Bar/pub, Library, Assisted bathing facility, IT suite, private dinin

Services..... Retirement Community scheme with on-site care staff (24 hours / 7 days), Non-resident management staff (24 hours, 7 days) and Careline alarm service

Accessibility.... Whole site accessible by wheelchair. Access to site easy. Distances: bus stop 20 yards; shop 1 mile(s); post office 2 mile(s); town centre 2 mile(s); GP 1 mile(s).

Lifesytyle..... Regular social activities include: full and varied activities schedule designed around our residents requests, organised by Activities team. Meal(s) available (full restaurant facilities). New residents accepted from 55 years of age. Both cats & dogs ge

Tenure(s)..... Tenure(s): Leasehold

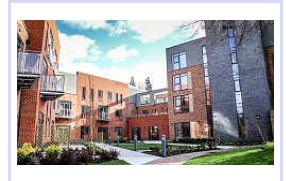
Manager..... Richmond Villages, Tel: 01926 675 825

Northamptonshire

Northampton

UPTON

**THE HAWTHORNS
NORTHAMPTON**
Weedon Road, Upton,
Northampton,
Northamptonshire, NN5 4RR



61 flats. Built in 2018. Sizes studio, 1 bedroom, 2 bedroom.

Facilities..... Lift, Lounge, Dining room, Guest facilities, Garden, Hobby room, Cafe, Hairdressing salon, Bar/pub, Library, Cinema, computer and internet, free WiFi, bowls

Services..... Retirement Home scheme with Non-resident management staff (24 hours) and Careline alarm service

Accessibility.... Whole site accessible by wheelchair. Access to site easy. Distances: bus stop 50 yards; shop 200 yards; town centre 2 mile(s); GP 0.5 mile(s).

Lifesytyle..... social activities include: Activities and games, cinema room, organised by Activity Co-ordinators. Meal(s) available (3 meals a day). New residents accepted from 55 years of age. Both cats & dogs generally accepted (Pets permitted only in ground floor

Tenure(s)..... Tenure(s): Rent (market)

Manager..... Hawthorns Retirement Group UK Ltd, Tel: 01604 684 920

Manager's notes: The Hawthorns Northampton is a retirement home where apartments are rented on an all-inclusive basis. The home was launched in March 2018 and has a bowling alley, bar, spa, therapy suite. Restaurant dining and a range of apartments. The Hawthorns is situa

Northumberland

Wansbeck

STOCKTON-ON-TEES

THE CHEVIOTS RETIREMENT VILLAGE

Darlington Road, Stockton-on-Tees, Cleveland, TS18 5ET



97 flats, bungalows. Built in 2018. Sizes 2 bedroom.

Facilities..... Lift, Lounge, Garden

Services..... Extra Care scheme with on-site care staff, Non-resident management staff and Careline alarm service

Accessibility....

Lifestyle..... New residents accepted from 55 years of age.

Tenure(s)..... Tenure(s): Rent (social landlord) and Leasehold and Shared Ownership

Manager..... Bernicia Homes, Tel: 0344 800 3800

Nottinghamshire

Nottingham

CLIFTON

LARK HILL VILLAGE

New Rise, Clifton, Nottingham, Nottinghamshire, NG11 8BF



327 flats, bungalows. Built in 2009. Sizes 1 bedroom, 2 bedroom.

Facilities..... Lift, Lounge, Dining room, Restaurant open to the public, Laundry, Guest facilities, Garden, Hobby room, Activities room

Services..... Extra Care scheme with on-site care staff (24 hours / 7 days), Non-resident management staff (24 hours, 7 days) and Careline alarm service

Accessibility....

Lifestyle..... Meal(s) available.

Tenure(s)..... Tenure(s): Rent (social landlord) and Shared Ownership and Leasehold

Manager..... The ExtraCare Charitable Trust, Tel: 0115 969 5000

Oxfordshire

South Oxfordshire

HENLEY-ON-THAMES

THAMESFIELD

Wargrave Road, Henley-on-Thames, Oxfordshire, RG9 2LX



35 flats, bungalows. Built in 1993 and renovated in 2006. Sizes studio, 1 bedroom, 2 bedroom.

- Facilities*..... Lift, Lounge, Dining room, Guest facilities, Garden, Conservatory, Hobby room, Activities room, Hairdressing salon, Bar/pub, Assisted bathing facility, mobile library
- Services*..... Close Care scheme with on-site care staff (24 hours / 7 days), Non-resident management staff (24 hours)
- Accessibility*.... Whole site accessible by wheelchair. Access to site easy, but less so for less mobile people. Distances: bus stop 30 yards; shop 400 yards; post office 475 yards; town centre 400 yards; GP 450 yards; social centre 420 yards.
- Lifestyle*..... Regular social activities include: music, theatre, cinema outings, river trips, shopping trips, pub lunches, crosswords, knitting, art classes, poetry reading, outside speakers etc.. Meal(s) available. New residents accepted from 65 years of age. Both c
- Tenure(s)*..... Tenure(s): Leasehold
- Manager*..... Retirement Villages Group Ltd, Tel: 01372 383 950

Manager's notes: Luxury and comfort sit at the heart of life at Thamesfield, which enjoys a beautiful setting on the banks of the river, opposite Henley. There are 35 apartments offering close care living - meals are provided, domestic chores taken care of and activities

Linked care home

- **THAMESFIELD NURSING HOME Wargrave Road, Henley-on-Thames, Oxfordshire RG9 2LX**

Home type . . Care home with nursing

Care for Older people generally / People with dementia

Description . . This home accommodates 12 residents in 12 single rooms (12 en suite).

Contact HC-One. Tel. 0333 999 8748

Oxfordshire

Vale of White Horse

LETCOMBE REGIS

RICHMOND LETCOMBE REGIS

South Street, Letcombe Regis, Wantage, Oxfordshire, OX12 9RG



62 flats. Built in 2010. Sizes 1 bedroom, 2 bedroom.

- Facilities*..... Lift, Stair lift(s), Lounge, Dining room, Restaurant open to the public, Laundry, Guest facilities, Garden, Community centre, Hobby room, Activities room, Cafe, Shop, Hairdressing salon, Jacuzzi, Swimming pool, Bar/pub, Library, Assisted bathing facility,
- Services*..... Extra Care scheme with on-site care staff (24 hours / 7 days), Non-resident management staff (24 hours, 7 days) and Careline alarm service
- Accessibility*.... Whole site accessible by wheelchair. Access to site easy. Distances: bus stop 10 yards; shop 10 yards; post office 1 mile(s); town centre 1 mile(s); GP 1 mile(s); social centre 1 mile(s).
- Lifestyle*..... social activities include: Varied activities programme - schedule changes weekly, organised by Activities team. New residents accepted from 55 years of age. Both cats & dogs generally accepted.
- Tenure(s)*..... Tenure(s): Leasehold and Rent (market)
- Manager*..... Richmond Villages, Tel: 01926 675 825

Oxfordshire

West Oxfordshire

WITNEY

RICHMOND WITNEY
Curbridge Road, Witney,
Oxfordshire, OX29 7NR



126 flats. Built in 2016. Sizes 1 bedroom, 2 bedroom.

Facilities..... Lounge, Restaurant open to the public, Garden, Community centre

Services..... Assisted Living scheme with on-site care staff (24 hours / 7 days), Non-resident management staff

Accessibility....

Lifestyle..... Meal(s) available.

Tenure(s)..... Tenure(s): Leasehold

Manager..... Richmond Villages, Tel: 01926 675 825

Manager's notes: With development now started and the first residents due to move in Winter 2015, Richmond Witney, like all Richmond Villages, will provide the very best retirement living.

A modern concept in retirement living, our communities are for people who want t

Linked care home

- **RICHMOND WITNEY CARE HOME** Coral Springs Way, Richmond Village, Witney, Oxfordshire OX28 5DG

Home type . . . Care home, Care home with nursing

Care for Older people generally / People with dementia / People with a terminal illness

Description . . . This home accommodates 60 residents in 60 single rooms (60 en suite). It was purpose built in 2017 and has a garden.

Contact Richmond Villages. Tel. 01993 627 394

Scottish Borders

Scottish Borders

GALASHIELS

KINGSKNOWES VILLAGE
Tweed Road, Galashiels,
Selkirkshire, TD1 3EU



30 flats, bungalows.

Facilities.....

Services..... Non-resident management staff

Accessibility....

Lifestyle.....

Tenure(s)..... Tenure(s): Ownership

Manager..... Four Seasons Health Care Ltd, Tel: 01625 417 800

Manager's notes: For further information, please contact the Warden on 01896 754 946

Shropshire

Oswestry

GOBOWEN

**MEADOWBROOK COURT
BUNGALOWS**
Twmpath Lane, Gobowen,
Oswestry, Shropshire, SY10 7HD



60 bungalows. Built in 1996. Sizes 1 bedroom, 2 bedroom.
Includes mobility and wheelchair standard properties.

Facilities..... Lounge, Dining room, Restaurant open to the public, Laundry, Guest facilities, Garden, Conservatory, Community centre, parking facilities

Services..... Close Care scheme with on-site care staff (24 hours / 7 days), Non-resident management staff

Accessibility.... Access to site easy. Distances: bus stop 1 mile(s); shop 1 mile(s); post office 1 mile(s); town centre 0.5 mile(s); GP 3 mile(s).

Lifestyle..... Regular social activities include: various visiting bodies and performers. Meal(s) available. Cats only generally accepted.

Tenure(s)..... Tenure(s): Leasehold

Manager..... Leabrook Lodge Ltd, Tel: 01691 671 555

Manager's notes: Please contact local estate agents for any available properties. This purpose built development offers additional care facilities if required.

Linked care home

- **MEADOWBROOK CARE HOME** Twmpath Lane, Gobowen, nr Oswestry, Shropshire SY10 7AH

Home type . . . Care home with nursing

Care for Older people generally / People with a terminal illness

Description . . . This home accommodates 79 residents in 42 single and 18 shared rooms (60 en suite). It was purpose built and has a garden.

Contact Four Seasons Health Care Ltd. Tel. 01691 574499

Shropshire

South Shropshire

SOUTH SHROPSHIRE

ROMAN DOWNS
The Old Shippon, Craven Arms,
Shropshire, SY7 9LX



54 flats, bungalows. Built in 2007. Sizes 1 bedroom, 2 bedroom, 3 bedroom.

Facilities..... Lift, Lounge, Laundry, Garden

Services.....

Accessibility.... Access to site easy, but less so for less mobile people. Distances: bus stop 0.25 mile(s); shop 0.5 mile(s); post office 0.5 mile(s); town centre 0.5 mile(s); GP 0.5 mile(s); social centre 0.5 mile(s).

Lifestyle..... Regular social activities include: Variety of activities. New residents accepted from 50 years of age. Both cats & dogs generally accepted (Pets with permission).

Tenure(s)..... Tenure(s): Leasehold and Rent (market) and Freehold

Manager..... Connexus, Tel: 0333 231 3233

Somerset

Bath & North East Somerset

KEYNSHAM

THE CHOCOLATE QUARTER
Somerdale, Keynsham, Bristol,
Avon, BS31 2AU



136 flats. Built in 2017. Sizes 1 bedroom, 2 bedroom.

Facilities..... Lift, Lounge, Restaurant open to the public, Guest facilities, Garden, Community centre, Hobby room, Activities room, Cafe, Hairdressing salon, Jacuzzi, Swimming pool, Bar/pub, Assisted bathing facility, cinema, woodwork studio, dance studio

Services..... Assisted Living scheme with on-site care staff (24 hours / 7 days), Non-resident management staff and Careline alarm service

Accessibility.... Whole site accessible by wheelchair. Access to site easy. Distances: bus stop 20 yards; shop 500 yards; post office 0.75 mile(s); town centre 0.75 mile(s); GP 10 yards; social centre 10 yards.

Lifesytle..... social activities. Meal(s) available. Both cats & dogs generally accepted.

Tenure(s)..... Tenure(s): Leasehold

Manager..... St Monica Trust, Tel: 0117 949 4000

Manager's notes: The Chocolate Quarter is a stylish development of spacious, well-appointed retirement apartments together with a care home within the complex. Once home to the nation's favourite chocolate treats, these grand 1920s buildings have been lovingly refurbished

Linked care home

- **CHARTERHOUSE CARE HOME The Chocolate Quarter, Trajectus Way, Keynsham, Bristol BS31 2AU**

Home type . . . Care home with nursing

Care for Older people generally / People with dementia

Description . . . This home accommodates 93 residents in 93 single rooms (93 en suite). It was purpose built in 2017 and has a garden. Overnight visitors can usually be accommodated.

Contact St Monica Trust. Tel. 0800 952 0300

Somerset

Bristol

BRISTOL

AUDLEY REDWOOD
Beggars Bush Lane, Failand,
Bristol, Avon, BS8 3TG



127 flats, bungalows. Built in 2018. Sizes 1 bedroom, 2 bedroom, 3 bedroom.

Facilities..... Lift, Lounge, Restaurant open to the public, Guest facilities, Garden, Hobby room, Activities room, Hairdressing salon, Swimming pool, Bar/pub, Library, luxury spa, parking facilities

Services..... Extra Care scheme with on-site care staff (24 hours / 7 days), Resident management staff, Visiting management staff (24 hours, 7 days) and Careline alarm service

Accessibility....

Lifesytle..... New residents accepted from 60 years of age.

Tenure(s)..... Tenure(s): Leasehold

Manager..... Audley Villages, Tel: 0800 093 8181

Manager's notes: Audley Redwood luxury retirement village is set within acres of landscaped parkland and is a short drive from the bustling city of Bristol. Just minutes from historic Clifton and the spectacular North Somerset coast, there are breathtaking scenes, right o

Somerset

Bristol

WESTBURY-ON-TRYM

OATLEY HOUSE

Cote Lane, Westbury-on-Trym,
Bristol, Avon, BS9 3UN



71 flats, bungalows. Built in 1925 and renovated in 2003. Sizes 1 bedroom, 2 bedroom. Includes mobility and wheelchair standard properties.

Facilities..... Lift, Lounge, Dining room, Restaurant open to the public, Laundry, Guest facilities, Garden, Conservatory, Hobby room

Services..... on-site care staff (24 hours / 7 days), Non-resident management staff (24 hours, 7 days)

Accessibility.... Access to site easy. Distances: bus stop 100 yards; shop 100 yards; shop 1 mile(s); post office 1 mile(s); town centre 2 mile(s); GP 1 mile(s); social centre 5 yards.

Lifestyle..... Scheme for, or of particular interest to: members of C of E or other Protestant faith. Regular social activities include: swimming pool & gym, painting, calligraphy, croquet, woodwork, art & craft. Meal(s) available (There is a licensed restaurant for res)

Tenure(s)..... Tenure(s): Shared Ownership

Manager..... St Monica Trust, Tel: 0117 949 4000

Manager's notes: Oatley House is a stunning re-development of a fine listed building which offers a variety of apartments on a lease purchase basis. Its unique setting, with spectacular architecture in spacious grounds makes it an attractive and stimulating place to live

Linked care home

- **JOHN WILLS HOUSE Westbury Fields Retirement Village, Jessop Crescent, Bristol BS10 6TU**

Home type . . . Care home with nursing

Care for Older people generally / People with physical difficulties / People with dementia / People with a terminal illness

Description . . This home accommodates 80 residents in 80 single rooms (80 en suite). It was purpose built and has a garden. Facilities are available for family or friends to stay overnight.

Contact St Monica Trust. Tel. 0117 949 4735

Somerset

Bristol

WESTBURY-ON-TRYM

WESTBURY FIELDS

Falcondale Road, Westbury-on-Trym, Bristol, Avon, BS10 6TU



98 flats, bungalows. Built in 2003. Sizes 1 bedroom, 2 bedroom, 3 bedroom. Includes mobility and wheelchair standard properties.

Facilities..... Lift, Lounge, Dining room, Restaurant open to the public, Laundry, Guest facilities, Garden, Conservatory, Community centre, Hobby room, Activities room, Cafe, Hairdressing salon, Jacuzzi, Bar/pub, Library, Assisted bathing facility, croquet lawn, cricket

Services..... on-site care staff (24 hours / 7 days), Non-resident management staff (24 hours, 7 days) and Careline alarm service

Accessibility.... Whole site accessible by wheelchair. Access to site easy. Distances: bus stop 100 yards; shop 1 mile(s); post office 1 mile(s); town centre 1 mile(s); GP 1 mile(s); social centre 5 yards.

Lifestyle..... Regular social activities include: an activities organiser puts together a regular programme of events including outings, social events and activities. Meal(s) available (There are two licensed restaurants on site for residents and their families). New

Tenure(s)..... Tenure(s): Shared Ownership and Rent (social landlord)

Manager..... St Monica Trust, Tel: 0117 949 4000

Manager's notes: Westbury Fields is a new Retirement village, which has been developed by the St. Monica Trust to provide a range of accommodation, care and support in a stimulating, vibrant and safe community.

The village is home to more than 200 older people who occu

Linked care home

- **JOHN WILLS HOUSE Westbury Fields Retirement Village, Jessop Crescent, Bristol BS10 6TU**

Home type . . . Care home with nursing

Care for Older people generally / People with physical difficulties / People with dementia / People with a terminal illness

Description . . This home accommodates 80 residents in 80 single rooms (80 en suite). It was purpose built and has a garden. Facilities are available for family or friends to stay overnight.

Contact St Monica Trust. Tel. 0117 949 4735

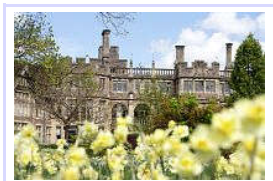
Somerset

Bristol

WESTBURY-ON-TRYM

COTE LANE RETIREMENT VILLAGE

Cote Lane, Westbury-on-Trym, Bristol, Avon, BS9 3TN



179 flats. Built in 1925. Sizes 1 bedroom, 2 bedroom. Includes mobility and wheelchair standard properties.

Facilities..... Lift, Lounge, Dining room, Laundry, Garden, Conservatory, Hobby room

Services..... Extra Care scheme with on-site care staff (24 hours / 7 days), Non-resident management staff (24 hours, 7 days)

Accessibility.... Access to site easy. Distances: bus stop 100 yards; shop 1 mile(s); post office 1 mile(s); town centre 2 mile(s); GP 1 mile(s); social centre 5 yards.

Lifestyle..... Scheme for, or of particular interest to: baptised member of the Church of England or other protestant faith. Regular social activities. Meal(s) available (There is a licensed restaurant on the site for residents and their families). New residents accep

Tenure(s)..... Tenure(s): Leasehold and Shared Ownership

Manager..... St Monica Trust, Tel: 0117 949 4000

Manager's notes: First established in 1925 and set in beautiful parkland adjacent to Bristol's Durdham Downs in Westbury-on-Trym, our Cote Lane Retirement Village is St Monica Trust's founding site. With its own chapel and stunning gardens, our Cote Lane Retirement Villa

Linked care home

- **JOHN WILLIS HOUSE Westbury Fields Retirement Village, Jessop Crescent, Bristol BS10 6TU**

Home type . . . Care home with nursing

Care for Older people generally / People with physical difficulties / People with dementia / People with a terminal illness

Description . . This home accommodates 80 residents in 80 single rooms (80 en suite). It was purpose built and has a garden. Facilities are available for family or friends to stay overnight.

Contact St Monica Trust. Tel. 0117 949 4735

Somerset

Bristol

WESTBURY-ON-TRYM

WESTFIELD HOUSE

Cote Lane, Westbury-on-Trym, Bristol, Avon, BS9 3TJ



60 flats. Built in 1985 and renovated in 2002. Sizes 1 bedroom, 2 bedroom. Includes mobility and wheelchair standard properties.

Facilities..... Lift, Lounge, Dining room, Restaurant open to the public, Laundry, Guest facilities, Garden, Conservatory, Hobby room

Services..... on-site care staff, Non-resident management staff (24 hours, 7 days)

Accessibility.... Access to site easy. Distances: bus stop 100 yards; shop 1 mile(s); post office 1 mile(s); town centre 2 mile(s); GP 1 mile(s); social centre 5 yards.

Lifestyle..... Scheme for, or of particular interest to: baptised members of the Church of England or other protestant faith. Regular social activities include: Swimming pool, Gym, Arts, Crafts, Pottery, Croquet, Woodwork, Painting & Calligraphy. Meal(s) available (There

Tenure(s)..... Tenure(s): Rent (market)

Manager..... St Monica Trust, Tel: 0117 949 4000

Manager's notes: Westfield House apartments offer a range of spacious retirement/sheltered apartments for rent. Its unique setting in the magnificent gardens and parkland of the larger community at Cote Lane has made the scheme an extremely popular option for people look

Linked care home

- **JOHN WILLIS HOUSE Westbury Fields Retirement Village, Jessop Crescent, Bristol BS10 6TU**

Home type . . . Care home with nursing

Care for Older people generally / People with physical difficulties / People with dementia / People with a terminal illness

Description . . This home accommodates 80 residents in 80 single rooms (80 en suite). It was purpose built and has a garden. Facilities are available for family or friends to stay overnight.

Contact St Monica Trust. Tel. 0117 949 4735

Somerset

Bristol

WESTBURY-ON-TRYM

SOMMERVILLE

Westbury Fields, Cricket Lane,
Westbury-on-Trym, Bristol,
Avon, BS10 6TW



51 flats. Built in 2004. Sizes 1 bedroom, 2 bedroom. Includes mobility and wheelchair standard properties.

- Facilities*..... Lift, Lounge, Dining room, Restaurant open to the public, Laundry, Guest facilities, Garden, Conservatory, Community centre, Hobby room, Cafe, Hairdressing salon, Jacuzzi, Bar/pub, Library, Assisted bathing facility, bowls, boules, half-size snooker table
- Services*..... Assisted Living scheme with on-site care staff (24 hours / 7 days), Non-resident management staff (24 hours, 7 days)
- Accessibility*.... Whole site accessible by wheelchair. Access to site easy. Distances: bus stop 100 yards; shop 1 mile(s); post office 1 mile(s); town centre 1 mile(s); GP 1 mile(s); social centre 5 yards.
- Lifestyle*..... Regular social activities include: an activities organiser puts together a regular programme of events, outings and activity. Meal(s) available (There are two licensed restaurants for residents and their families, also home delivery). New residents accept
- Tenure(s)*..... Tenure(s): Rent (social landlord)
- Manager*..... St Monica Trust, Tel: 0117 949 4000

Manager's notes: Somerville, which is part of the larger retirement village of Westbury Fields, offers residents a range of housing and support that can be accessed through Bristol City Council. These apartments offer 51 one and two bedroom residences for rent in addition

Linked care home

- **JOHN WILLS HOUSE Westbury Fields Retirement Village, Jessop Crescent, Bristol BS10 6TU**

Home type . . . Care home with nursing

Care for Older people generally / People with physical difficulties / People with dementia / People with a terminal illness

Description . . This home accommodates 80 residents in 80 single rooms (80 en suite). It was purpose built and has a garden. Facilities are available for family or friends to stay overnight.

Contact St Monica Trust. Tel. 0117 949 4735

Somerset

North Somerset

CLEVEDON

THE HAWTHORNS CLEVEDON

18-19 Elton Road, Clevedon,
Somerset, BS21 7EH



92 flats. Built in 1994 and renovated in 2017. Sizes studio, 1 bedroom, 2 bedroom.

- Facilities*..... Lift, Lounge, Dining room, Laundry, Guest facilities, Garden, Activities room, Hairdressing salon, Library, chapel, snooker room, and general activities room
- Services*..... Non-resident management staff (24 hours, 7 days) and Careline alarm service
- Accessibility*.... Whole site accessible by wheelchair. Access to site easy. Distances: bus stop 25 yards; shop 600 yards; post office 1 mile(s); town centre 1 mile(s); GP 1 mile(s); social centre 1 mile(s).
- Lifestyle*..... Regular social activities include: Daily activities are arranged to exercise the body & the mind - yoga, music & movement etc, entertainment & excursions, bridge, art club and regular local trips in private minicoach etc, organised by The Activities Co-ordi
- Tenure(s)*..... Tenure(s): Rent (market)
- Manager*..... Hawthorns Retirement Group UK Ltd, Tel: 01275 790 060

Manager's notes: At the Hawthorns we offer an excellent choice of apartments, menu and activities together with like minded neighbours and companionship. Ideal for couples or single residents, the private apartments are bright and spacious and there is a wide choice of si

Somerset

North Somerset

SANDFORD

SANDFORD STATION
2 Hapil Close, Darlisette,
Sandford, Winscombe, North
Somerset, BS25 5RF



108 flats, cottages. Built in 2009. Sizes 1 bedroom, 2 bedroom.

Facilities..... Lounge, Dining room, Laundry, Guest facilities, Garden, Activities room, Cafe, Shop, Hairdressing salon, Swimming pool, Bar/pub, Library, Assisted bathing facility

Services..... Extra Care scheme with on-site care staff (24 hours / 7 days), Visiting management staff, Non-resident management staff and Careline alarm service

Accessibility....

Lifestyle..... Regular social activities, organised by Activities Co-Ordinator. New residents accepted from 60 years of age. Both cats & dogs generally accepted, but not to be replaced.

Tenure(s)..... Tenure(s): Leasehold and Shared Ownership and Rent (social landlord)

Manager..... St Monica Trust, Tel: 0117 949 4000

Manager's notes: Located in the heart of the beautiful North Somerset countryside, Sandford Station retirement village stands alongside the famous Strawberry Line cycle path. The original station building forms part of the site, and the Station Master's cottage is now a r

Linked care home

- **THE RUSSETS & SHERWOOD 1 & 2 Pegasus Place, Sandford Station, Sandford, Winscombe, North Somerset BS25 5RF**

Home type . . . Care home with nursing

Care for Older people generally / People with physical difficulties / People with a mental disability / People with dementia / People with a terminal illness

Description . . . This home accommodates 103 residents in 103 single rooms (103 en suite). It was purpose built in 2009 and has a garden. Facilities are available for family or friends to stay overnight.

Contact St Monica Trust. Tel. 01934 825 900

Somerset

North Somerset

WESTON-SUPER-MARE

DIAMOND COURT
Diamond Batch, Worle, Weston-
super-Mare, North Somerset,
BS24 7FY



53 flats. Built in 2007. Sizes 1 bedroom, 2 bedroom.

Facilities..... Lift, Lounge, Restaurant open to the public, Laundry, Guest facilities, Garden, Hairdressing salon, Library, Assisted bathing facility, roof terrace

Services..... Extra Care scheme with on-site care staff (24 hours / 7 days), Non-resident management staff and Careline alarm service

Accessibility.... Whole site accessible by wheelchair. Access to site easy. Distances: bus stop 40 yards; shop 100 yards; post office 1 mile(s); town centre 4 mile(s); GP 100 yards; social centre 0.5 mile(s).

Lifestyle..... Regular social activities include: Film night, bingo, events, fetes, keep fit, and beetle drive., organised by Tenants and staff. New residents accepted from 55 years of age. Both cats & dogs generally accepted, but not to be replaced.

Tenure(s)..... Tenure(s): Rent (social landlord)

Manager..... Housing 21, Tel: 0370 192 4038 (Lettings & Sales)

Manager's notes: Diamond Court is situated in the popular sea-side town of Weston-super-Mare, hosting 10 one bed and 43 two bed apartments. Onsite facilities include 2 lifts, large lounge, guest facilities, garden, hobby room, activities room, café, shop, hairdressing sal

Somerset

Taunton Deane

MIDDLEWAY

BLAGDON VILLAGE

Middleway, Taunton, Somerset,
TA1 3RR



85 flats, bungalows, cottages. Built in 2006. Sizes 2 bedroom, 3 bedroom. Includes mobility and wheelchair standard properties.

Facilities..... Lift, Lounge, Dining room, Laundry, Guest facilities, Garden, Conservatory, Community centre, Activities room, Cafe, Shop, Hairdressing salon, Bar/pub, Library, snooker room, 9 hole putting green

Services..... Visiting management staff (maintenance on call 24 hours), Non-resident management staff and Careline alarm service

Accessibility.... Whole site accessible by wheelchair. Access to site easy. Distances: bus stop 200 yards; shop 1 mile(s); post office 1 mile(s); town centre 0.75 mile(s); GP 1 mile(s).

Lifestyle..... Regular social activities include: various - line dancing, poetry etc, organised by Residents Association. Meal(s) available (village restaurant available on set days). New residents accepted from 60 years of age. Both cats & dogs generally accepted.

Tenure(s)..... Tenure(s): Leasehold

Manager..... Retirement Villages Group Ltd, Tel: 01372 383 950

Manager's notes: Blagdon Village is a tight-knit community for the over 60's. Set in the sought after area of Haines Hill, around a mile from the centre of Taunton, a distinct sense of peace and tranquility surrounds the village, which offers views of both the Quantock a

South Lanarkshire

South Lanarkshire

AUCHLOCHAN

AUCHLOCHAN GARDEN VILLAGE

New Trows Road, Lesmahagow,
Lanark, Lanarkshire, ML11 0GS



235 flats, bungalows, cottages. Built in 2010. Sizes studio, 1 bedroom, 2 bedroom, 3 bedroom. Includes mobility and wheelchair standard properties.

Facilities..... Lift, Stair lift(s), Lounge, Restaurant open to the public, Laundry, Guest facilities, Garden, Community centre, Hobby room, Activities room, Cafe, Shop, Hairdressing salon, Assisted bathing facility, extensive gardens, lakes & woodland

Services..... Housing With Care scheme with on-site care staff (24 hours / 7 days), Non-resident management staff (24 hours, 7 days) and Careline alarm service

Accessibility.... Whole site accessible by wheelchair. Access to site fairly easy, but less so for less mobile people.

Lifestyle..... social activities include: Outwith Covid, there are various activities, organised by wellbeing staff. Meal(s) available (in our bistro and to flats). New residents accepted from 55 years of age. Both cats & dogs generally accepted, but not to be replac

Tenure(s)..... Tenure(s): Rent (social landlord) and Leasehold and Shared Ownership

Manager..... MHA, Tel: 01332 296 200

Manager's notes: Contact Auchlochan Retirement Village direct on 01555 896 800 for further information.

The Courtyard care suites and apartments were specifically designed to combine the best of both worlds – independent living with all the benefits of 24-hour care, su

South Yorkshire

Sheffield

BROOMHILL

LIFESTYLE HOUSE

2 Melbourne Avenue, Broomhill,
Sheffield, S10 2QH



36 flats, bungalows. Built in 1983. Sizes 1 bedroom, 2 bedroom.

Facilities..... Lounge, Laundry, Guest facilities, Garden, Conservatory, Community centre, Activities room

Services..... Resident management staff (part time) and Careline alarm service

Accessibility....

Lifestyle.....

Tenure(s)..... Tenure(s): Leasehold and Rent (market)

Manager..... Lifestyle Gold Limited, Tel: 01246 456 702

Manager's notes: Lifestyle House is situated on the pleasant west side of Sheffield. With fully landscaped gardens, well-kept, lawns and patios, it is attractively set out in mature wooded grounds. It not only has direct pedestrian access to Glossop Road, it is also close

WOODHOUSE

BRUNSWICK GARDENS VILLAGE

Junction Road, Woodhouse,
Sheffield, South Yorkshire, S13 7RB



217 flats, bungalows. Built in 2008. Sizes 1 bedroom, 2 bedroom.

Facilities..... Lift, Lounge, Dining room, Laundry, Guest facilities, Garden, Hobby room, Activities room, Cafe, Shop, Hairdressing salon, Bar/pub, Library, computer/IT room

Services..... Extra Care scheme with on-site care staff (24 hours / 7 days), Non-resident management staff (24 hours, 7 days) and Careline alarm service

Accessibility.... Whole site accessible by wheelchair. Access to site easy, but less so for less mobile people. Distances: bus stop 300 yards; shop 100 yards; post office 1 mile(s); town centre 1 mile(s); GP 100 yards.

Lifestyle..... Regular social activities include: various. Meal(s) available. New residents accepted from 55 years of age. Both cats & dogs generally accepted (with written permission).

Tenure(s)..... Tenure(s): Rent (social landlord) and Leasehold and Shared Ownership

Manager..... The ExtraCare Charitable Trust, Tel: 0114 294 0000

Staffordshire

Lichfield

LICHFIELD

BEACON PARK VILLAGE

Lower Sandford Street, Lichfield,
Staffordshire, WS13 6JN



135 flats. Built in 2005. Sizes 1 bedroom, 2 bedroom, 3 bedroom. Includes mobility and wheelchair standard properties.

Facilities..... Lift, Lounge, Dining room, Laundry, Guest facilities, Garden, Community centre, Hobby room, Activities room, Cafe, Shop, Hairdressing salon, Jacuzzi, Bar/pub, Library, Assisted bathing facility, woodwork room, greenhouse, restaurant, wellbeing room, main

Services..... Extra Care scheme with on-site care staff (24 hours / 7 days), Non-resident management staff (24 hours, 7 days) and Careline alarm service

Accessibility.... Whole site accessible by wheelchair. Distances: bus stop 300 yards; shop 500 yards; post office 0.5 mile(s); town centre 500 yards; GP 0.5 mile(s).

Lifestyle..... Regular social activities include: Whether our residents want to learn new skills, challenge themselves to the limits, or simply relax in the company of friends, the ExtraCare lifestyle provides a wide range of sociable opportunities and activities. On-si

Tenure(s)..... Tenure(s): Leasehold and Rent (social landlord) and Shared Ownership

Manager..... Bromford, Tel: 0330 1234 034

Manager's notes: To apply for a tenancy, please go to www.homeseeckerplus.co.uk

Any person over the age of 60 is eligible to apply for a home at Beacon Park Village (over 55 in exceptional circumstances). Priority is given to local people or those who have a local conne

Staffordshire

Newcastle-under-Lyme

CROSS HEATH

MILL RISE

Lymebrook Way, Cross Heath,
Newcastle-under-Lyme,
Staffordshire, ST5 9GA



60 flats. Built in 2009. Sizes 1 bedroom, 2 bedroom.

Facilities..... Lift, Lounge, Laundry, Guest facilities, Garden, Conservatory, Hobby room, Assisted bathing facility

Services..... Extra Care scheme with on-site care staff (24 hours / 7 days), Non-resident management staff

Accessibility.... Whole site accessible by wheelchair. Access to site fairly easy. Distances: bus stop 100 yards; shop 200 yards; post office 1 mile(s); town centre 1.5 mile(s); GP 10 yards.

Lifestyle..... New residents accepted from 55 years of age.

Tenure(s)..... Tenure(s): Rent (social landlord) and Shared Ownership

Manager..... Aspire Housing Ltd, Tel: 01782 635 200

Manager's notes: Mill Rise is an extra-care village with 60 comfortable individual apartments for adults aged 55 or over who are able to live on their own but may have some personal support or care needs.

In addition to the privacy of their own homes, residents can enjoy

Staffordshire Moorlands

BAGNALL

BAGNALL HEIGHTS

Bagnall Road, Bagnall, Stoke-on-Trent, Staffordshire, ST9 9JL



51 flats, bungalows. Built in 2007. Sizes 1 bedroom, 2 bedroom.

Facilities..... Lounge, Garden

Services..... Extra Care scheme with Non-resident management staff

Accessibility....

Lifestyle..... Regular social activities.

Tenure(s)..... Tenure(s): Leasehold

Manager..... Bagnall Heights Ltd, Tel: 01782 541222

Staffordshire

Stoke-on-Trent

BERRYHILL VILLAGE

BERRYHILL VILLAGE

Arbourfield Drive, Stoke-on-Trent, Staffordshire, ST2 9RJ



148 flats. Built in 1998. Sizes 1 bedroom, 2 bedroom.

Facilities..... Lift, Lounge, Dining room, Laundry, Guest facilities, Garden, Community centre, Hobby room, Activities room, Cafe, Shop, Hairdressing salon, Bar/pub, Library, Assisted bathing facility

Services..... Extra Care scheme with on-site care staff (24 hours / 7 days), Non-resident management staff (24 hours, 7 days) and Careline alarm service

Accessibility.... Whole site accessible by wheelchair. Access to site easy, but less so for less mobile people. Distances: bus stop 2 yards; shop 100 yards; post office 100 yards; town centre 2.5 mile(s); GP 1 mile(s).

Lifestyle..... Regular social activities include: various - there is a full programme of activities available on request, organised by Village Activity Facilitator and Activity support workers. Meal(s) available. New residents accepted from 55 years of age. Both cats

Tenure(s)..... Tenure(s): Rent (social landlord)

Manager..... Midland Heart, Tel: 0345 60 20 540

Manager's notes: Berryhill incorporates a shop, gym, hair salon, computer room, library, craft room, licensed bar, café bar, village hall, and restaurant - all set in its own grounds. Visitors to Berryhill comment on the busy, friendly atmosphere where there is lots going on

Staffordshire

Stoke-on-Trent

BRADELEY

BRADELEY VILLAGE

Brammer Street, Bradeley, Stoke-on-Trent, Staffordshire, ST6 7QS



238 flats. Built in 1994. Sizes 1 bedroom, 2 bedroom, 3 bedroom.

Facilities..... Lift, Lounge, Laundry, Guest facilities, Garden, Cafe, Shop, Hairdressing salon, Bar/pub, Library

Services..... Non-resident management staff and Careline alarm service

Accessibility.... Access to site easy. Distances: shop 10 yards; post office 500 yards; town centre 1 mile(s); GP 440 yards; social centre 10 yards.

Lifestyle..... Regular social activities include: quizzes, bingo, trips, shows, keep fit, education classes. New residents accepted from 55 years of age.

Tenure(s)..... Tenure(s): Rent (social landlord) and Shared Ownership

Manager..... Staffs Housing, Tel: 01782 744 533

Manager's notes: Bradeley Village is a sheltered housing village with 238 apartments and a variety of communal facilities.

Apartments are situated in the main village centre, and in several annexes close by. While most apartments are for rent, one of the annexes, Celebrat

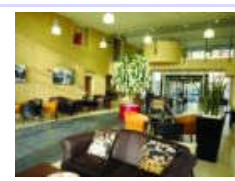
Staffordshire

Stoke-on-Trent

STOKE ON TRENT

WEST END VILLAGE

London Road, Boothon, Stoke-on-Trent, Staffordshire, ST4 5AB



112 flats. Built in 2011. Sizes 2 bedroom.

Facilities..... Lift, Lounge, Restaurant open to the public, Laundry, Guest facilities, Garden, Conservatory, Community centre, Activities room, Cafe, Shop, Hairdressing salon, Jacuzzi, Bar/pub, Library, Assisted bathing facility

Services..... Extra Care scheme with on-site care staff (24 hours / 7 days), Non-resident management staff and Careline alarm service

Accessibility.... Whole site accessible by wheelchair. Access to site easy. Distances: bus stop 100 yards; shop 20 yards.

Lifestyle..... social activities include: varied activity programme, including bingo, quizzes, concerts, exercise, hobbies etc, organised by Activities Co-ordinator. New residents accepted from 55 years of age. Both cats & dogs generally accepted (permitted at manager)

Tenure(s)..... Tenure(s): Rent (social landlord) and Leasehold and Shared Ownership

Manager..... Staffs Housing, Tel: 01782 744 533

Manager's notes: West End Village is an 'extra care' housing village in Stoke on Trent. It offers independent living for people aged 55+, along with communal facilities and lots of social activities and places to meet. Lots of the communal facilities are open to residents

Staffordshire

Stoke-on-Trent

STOKE-ON-TRENT

ROWAN VILLAGE

George Avenue, Meir, Stoke-on-Trent, Staffordshire, ST3 6FB



75 flats. Built in 2008. Sizes 1 bedroom, 2 bedroom.

Facilities..... Lift, Lounge, Dining room, Restaurant open to the public, Laundry, Guest facilities, Garden, Conservatory, Community centre, Hobby room, Activities room, Cafe, Shop, Hairdressing salon, Bar/pub, Assisted bathing facility

Services..... Extra Care scheme with on-site care staff (24 hours / 7 days), Non-resident management staff and Careline alarm service

Accessibility.... Whole site accessible by wheelchair. Access to site easy. Distances: bus stop 10 yards; shop 800 yards; post office 1 mile(s); town centre 800 yards; GP 800 yards.

Lifestyle..... Regular social activities include: Entertainers, outings, games and clubs etc, organised by Residents and Activity Co-Ordinator. Meal(s) available. New residents accepted from 55 years of age. Both cats & dogs generally accepted, but not to be replaced

Tenure(s)..... Tenure(s): Rent (social landlord) and Shared Ownership and Leasehold

Manager..... Staffs Housing, Tel: 01782 744 533

Manager's notes: Rowan Village provides 75 comfortable, smart individual apartments for older adults who are able to live on their own but may have some personal support or care needs. Extensive communal facilities such as a coffee shop, restaurant, garden and shop allow

Surrey

Elmbridge

COBHAM

AUDLEY COBHAM

131 Fairmile Lane, Cobham, Surrey, KT11 2BU



76 flats. Built in 2022. Sizes 1 bedroom, 2 bedroom, 3 bedroom.

Facilities..... Lift, Restaurant open to the public, Cafe, Bar/pub

Services..... Retirement Village scheme with on-site care staff (24 hours / 7 days), Non-resident management staff

Accessibility....

Lifestyle.....

Tenure(s)..... Tenure(s): Leasehold

Manager..... Audley Villages, Tel: 0800 093 8181

Surrey

Elmbridge

WHITELEY VILLAGE

WHITELEY VILLAGE COTTAGES AND FLATS

Octagon Road, Whiteley Village,
Walton-on-Thames, Surrey,
KT12 4EH



255 bungalows. Built in 1918 and renovated in 2006. Sizes 1 bedroom, 2 bedroom. Includes mobility and wheelchair standard properties.

Facilities..... Lounge, Restaurant open to the public, Laundry, Guest facilities, Garden, Conservatory, Hobby room, Cafe, Shop, Hairdressing salon, Swimming pool, Bar/pub, Library, Assisted bathing facility

Services..... on-site care staff, Resident management staff, Non-resident management staff (7 days) and Careline alarm service

Accessibility.... Whole site accessible by wheelchair. Access to site easy, but less so for less mobile people. Distances: bus stop 20 yards; shop 70 yards; post office 70 yards; town centre 2 mile(s); GP 70 yards; social centre 70 yards.

Lifestyle..... This almshouse charity caters for: elderly poor people, with preference to those from the retail and agricultural trades.. Frequent social activities include: bowls, golf putting, art, allotments, whist, bridge, line dancing, sequence, old time, yoga, kee

Tenure(s)..... Tenure(s): Rent (social landlord)

Manager..... Whiteley Homes Trust, Tel: 01932 842 360

Manager's notes: The Village for single and married couples has its own shop, sub-post office, library, hall, leisure centre, church and chapels, swimming pool, workshop and garages, staff houses, and a guest house. Each cottage has a small garden. The village consists o

Linked care home

- **INGRAM HOUSE CARE HOME Octagon Road, Whiteley Village, Walton-on-Thames, Surrey KT12 4EH**

Home type . . . Care home

Care for Older people generally

Description . . . This home accommodates 27 residents in 27 single rooms. It was purpose built and has a garden. Facilities are available for family or friends to stay overnight.

Contact Whiteley Homes Trust. Tel. 01932 857 821

Surrey

Reigate & Banstead

KINGSWOOD

KINGSWOOD - FORTHCOMING DEVELOPMENT

St. Monicas Road, Kingswood,
Tadworth, Surrey, KT20 6EU



270 flats, cottages. Built in 2022. Sizes 1 bedroom, 2 bedroom, 3 bedroom.

Facilities..... Lounge, Dining room, Guest facilities, Garden, Activities room, Swimming pool

Services..... Non-resident management staff and Careline alarm service

Accessibility....

Lifestyle.....

Tenure(s)..... Tenure(s): Leasehold and Rent (market)

Manager..... Inspired Villages, Tel: 0800 138 0235

Runnymede

EGHAM

AUDLEY COOPER'S HILL

Cooper's Hill Lane, Englefield
Green, Egham, Surrey, TW20 0YU



128 flats. Built in 2019. Sizes 1 bedroom, 2 bedroom.

Facilities..... Lift, Lounge, Dining room, Restaurant open to the public, Guest facilities, Garden, Hobby room, Hairdressing salon, Swimming pool, Bar/pub, Library, Health club

Services..... Luxury Retirement Village scheme with on-site care staff (24 hours / 7 days), Non-resident management staff (24 hours, 7 days) and Careline alarm service

Accessibility....

Lifestyle..... Meal(s) available. New residents accepted from 55 years of age.

Tenure(s)..... Tenure(s): Leasehold

Manager..... Audley Villages, Tel: 0800 093 8181

Manager's notes: Formerly part of Brunel University, the site is located within the 66 acres of the Magna Carta Park in the village of Englefield Green, near Runnymede in Surrey. The retirement village will include 128 properties and is planned to open in 2019.

Experie

Surrey

Waverley

CRANLEIGH

ELMBRIDGE VILLAGE

Elmbridge Road, Cranleigh,
Surrey, GU6 8TR



236 flats, bungalows. Built in 1981. Sizes 1 bedroom, 2 bedroom. Includes mobility and wheelchair standard properties.

Facilities..... Stair lift(s), Lounge, Restaurant open to the public, Laundry, Guest facilities, Garden, Community centre, Hobby room, Activities room, Cafe, Shop, Bar/pub, Library, concert hall, snooker hall

Services..... Non-resident management staff (24 hours) and Careline alarm service

Accessibility.... Whole site accessible by wheelchair. Access to site easy, but less so for less mobile people. Distances: post office 1.75 mile(s); town centre 1.5 mile(s); GP 1.75 mile(s); social centre 1.75 mile(s).

Lifesytle..... Regular social activities include: numerous clubs:- indoor bowls, croquet, painting, line dancing, exercise, cards, knitting, poetry, table tennis etc., organised by residents. Meal(s) available (Restaurant open 5 days a week). New residents accepted fr

Tenure(s)..... Tenure(s): Leasehold

Manager..... Retirement Villages Group Ltd, Tel: 01372 383 950

Manager's notes: Elmbridge was the first privately owned retirement village in the UK. It remains as current now as it was when it opened three decades ago, offering well-thought out homes, in a desirable setting on the edge of the pretty voillage of Cranleigh in Surrey.

Swansea

Swansea

SKETTY PARK

HAZEL COURT

Sketty Park, Swansea, West
Glamorgan, SA2 8BP



120 flats. Built in 2008. Sizes 1 bedroom, 2 bedroom.

Facilities..... Lift, Lounge, Dining room, Laundry, Guest facilities, Garden, Hobby room, Shop, Hairdressing salon, Library, IT suite, exercise room

Services..... Extra Care scheme with on-site care staff (24 hours / 7 days), Non-resident management staff and Careline alarm service

Accessibility.... Whole site accessible by wheelchair.

Lifesytle..... Regular social activities, organised by a Community Activity Co-ordinator on site to help tenants and people in the community arrange events etc. New residents accepted from 55 years of age.

Tenure(s)..... Tenure(s): Rent (social landlord)

Manager..... Family Housing Association (Wales), Tel: 01792 460 192

Manager's notes: Innovation, trust, openness and fairness are at the heart of our values at Hazel Court and Family Housing Association. We promote social interaction, good relationships, activities, excellent care, and most of all we listen to, and respect our tenants and

Warwickshire

Nuneaton & Bedworth

BEDWORTH

RICHMOND BEDE VILLAGE

Hospital Lane, Goodyer's End,
Bedworth, Nuneaton,
Warwickshire, CV12 0PB



98 flats, bungalows, cottages. Built in 1991 and renovated in 2006. Sizes 1 bedroom, 2 bedroom. Includes mobility and wheelchair standard properties.

Facilities..... Lift, Stair lift(s), Lounge, Dining room, Restaurant open to the public, Laundry, Guest facilities, Garden, Community centre, Hobby room, Activities room, Cafe, Shop, Hairdressing salon, Bar/pub, Assisted bathing facility, bowling green, IT facility

Services..... Close Care scheme with on-site care staff (24 hours / 7 days), Non-resident management staff (24 hours, 7 days) and Careline alarm service

Accessibility.... Whole site accessible by wheelchair. Access to site easy. Distances: bus stop 500 yards; shop 0.5 mile(s); post office 0.5 mile(s); town centre 2 mile(s); GP 0.5 mile(s).

Lifestyle..... Regular social activities include: There is a varied range of activities driven by resident's requests., organised by Our Activities Co-Ordinator. Meal(s) available. New residents accepted from 55 years of age. Both cats & dogs generally accepted.

Tenure(s)..... Tenure(s): Leasehold

Manager..... Richmond Villages, Tel: 01926 675 825

Manager's notes: Richmond Bede Village is a lovely retirement community situated close between Coventry and Bedworth in the heart of England. Whether you choose to live in one of our 2 bedroom independent living apartments or require that little extra personal help with

Linked care home

- **RICHMOND BEDE VILLAGE Hospital Lane, Goodyers End, Bedworth, Warwickshire CV12 0PB**

Home type . . . Care home with nursing

Care for Older people generally / People with learning difficulties / People with physical difficulties / People with a terminal illness

Description . . This home accommodates 47 residents in 43 single and 4 shared rooms (45 en suite). It was purpose built and has a garden. Facilities are available for family or friends to stay overnight.

Contact Richmond Villages. Tel. 02476 645 544

Warwickshire

Rugby

DUNCHURCH

LIME TREE VILLAGE

Cawston Lane, Dunchurch,
Rugby, Warwickshire, CV22 7SA



153 flats, bungalows, cottages. Built in 2003. Sizes 2 bedroom, 3 bedroom. Includes mobility and wheelchair standard properties.

Facilities..... Lift, Lounge, Dining room, Laundry, Guest facilities, Garden, Conservatory, Hobby room, Activities room, Shop, Bar/pub, Library, Assisted bathing facility

Services..... on-site care staff, Non-resident management staff (part time) and Careline alarm service

Accessibility.... Whole site accessible by wheelchair. Access to site fairly easy. Distances: bus stop 20 yards; shop 20 yards; post office 1 mile(s); town centre 3 mile(s); GP 0.75 mile(s); social centre 3 mile(s).

Lifestyle..... Regular social activities include: Tai Chi, croquet, whist, boules, bridge, bowling, putting, & line dancing, organised by Residents Association. Meal(s) available (restaurant open 3 days a week). New residents accepted from 55 years of age. Both cats &

Tenure(s)..... Tenure(s): Leasehold

Manager..... Retirement Villages Group Ltd, Tel: 01372 383 950

Manager's notes: The centrepiece of Lime Tree Village is the stunning Edwardian mansion Cawston House. Completely refurbished during the village's development the house is where the abundance of facilities can be found. These include a multi function room, conservatory, r

Warwickshire

Warwick

LEAMINGTON SPA

AUDLEY BINSWOOD

Binswood Avenue, Leamington Spa, Warwickshire, CV32 5SE



114 flats. Built in 2015. Sizes 1 bedroom, 2 bedroom, 3 bedroom.

Facilities..... Lift, Lounge, Dining room, Restaurant open to the public, Guest facilities, Garden, Cafe, Hairdressing salon, Swimming pool, Bar/pub, Library

Services..... Retirement Living scheme with on-site care staff (24 hours / 7 days), Resident management staff, Visiting management staff (24 hours, 7 days) and Careline alarm service

Accessibility.... Whole site accessible by wheelchair. Access to site easy. Distances: bus stop 200 yards; shop 200 yards; post office 0.5 mile(s); town centre 0.5 mile(s); GP 1 mile(s).

Lifestyle..... social activities include: Monthly calendar of events, organised by Village Manager. Meal(s) available. New residents accepted from 55 years of age. Both cats & dogs generally accepted.

Tenure(s)..... Tenure(s): Leasehold

Manager..... Audley Villages, Tel: 0800 093 8181

Manager's notes: Binswood Hall was formerly North Leamington College and is located in the heart of the Royal Leamington Spa conservation area. It's a short walk from the fine shopping and leisure facilities of Leamington Spa, including the famous Pump Rooms. The restored

Warwickshire

Warwick

WARWICK

AUSTIN HEATH

Gallagher Way, Heathcote, Warwick, CV34 6AF



167 flats. Built in 2016. Sizes 1 bedroom, 2 bedroom.

Facilities..... Lift, Lounge, Dining room, Laundry, Guest facilities, Garden, Community centre, Hobby room, Activities room, Cafe, Shop, Hairdressing salon, Jacuzzi, Swimming pool, Bar/pub, Library, Assisted bathing facility, Restaurant, Deli, Café

Services..... Retirement Village scheme with on-site care staff (24 hours / 7 days), Resident management staff (24 hours, 7 days) and Careline alarm service

Accessibility.... Whole site accessible by wheelchair. Access to site easy. Distances: bus stop 100 yards; shop 10 yards; post office 10 yards; town centre 1 mile(s); GP 1 mile(s).

Lifestyle..... social activities include: as per residents' requirements or wishes, organised by Our event organiser. Meal(s) available (Restaurant, Bar, Café, room service). New residents accepted from 65 years of age. Both cats & dogs generally accepted.

Tenure(s)..... Tenure(s): Leasehold and Rent (market)

Manager..... Inspired Villages, Tel: 0800 138 0235

Manager's notes: Welcome to Inspired Villages. You deserve a little luxury in later life. And it shouldn't cost the earth either. With a choice of beautiful homes, your very own wellness spa, bistro-cafe, landscaped gardens, village concierge and maintenance team, this is

West Midlands

Birmingham

BIRMINGHAM

**BOURNVILLE GARDENS
RETIREMENT VILLAGE**
49 Bristol Road South,
Northfield, Birmingham, West
Midlands, B31 2FR



228 flats, cottages. Built in 2015. Sizes 1 bedroom, 2 bedroom, 3 bedroom.

Facilities..... Lift, Lounge, Restaurant open to the public, Laundry, Guest facilities, Garden, Hobby room, Activities room, Shop, Hairdressing salon, Library, IT suite, well-being suite, greenhouse, cash machine

Services..... Extra Care scheme with on-site care staff (24 hours / 7 days), Visiting management staff, Non-resident management staff (24 hours, 7 days) and Careline alarm service

Accessibility.... Whole site accessible by wheelchair.

Lifestyle..... social activities. Meal(s) available. New residents accepted from 55 years of age.

Tenure(s)..... Tenure(s): Shared Ownership and Leasehold and Rent (social landlord)

Manager..... The ExtraCare Charitable Trust, Tel: 02476 506 011

Manager's notes: A close partnership between The ExtraCare Charitable Trust, Bournville Village Trust and Birmingham City Council, Bournville Gardens opened in November 2015, off Bristol Road South on the site of the former Bournville College.

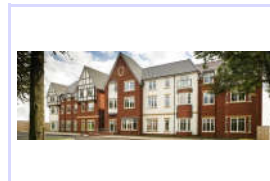
ExtraCare's unrivalled m

West Midlands

Birmingham

EDGBASTON

HAGLEY ROAD VILLAGE
322-336 Hagley Road,
Edgbaston, Birmingham, West
Midlands, B17 8BH



240 flats. Built in 2013. Sizes 1 bedroom, 2 bedroom.

Facilities..... Lift, Lounge, Restaurant open to the public, Laundry, Guest facilities, Garden, Hobby room, Activities room, Cafe, Shop, Hairdressing salon, Library

Services..... Extra Care scheme with on-site care staff (24 hours / 7 days), Visiting management staff (On-site housing related support), Non-resident management staff (24 hours, 7 days) and Careline alarm service

Accessibility....

Lifestyle..... Meal(s) available. New residents accepted from 55 years of age.

Tenure(s)..... Tenure(s): Rent (social landlord) and Shared Ownership and Leasehold

Manager..... The ExtraCare Charitable Trust, Tel: 0121 420 6000

Manager's notes: To find out more about living at the Village, please phone: 0121 420 6000.

Birmingham's Hagley Road Village, in Edgbaston, is one of five inspirational Village communities across the City, providing independence, social opportunity and an enriching li

West Midlands

Birmingham

EDGBASTON

AUDLEY ST GEORGE'S PLACE
Church Road, Edgbaston,
Birmingham, West Midlands,
B15 3SH



95 flats, cottages. Built in 2016. Sizes 1 bedroom, 2 bedroom, 3 bedroom.

Facilities..... Lift, Lounge, Dining room, Guest facilities, Cafe, Hairdressing salon, Swimming pool, Library, semi-underground car park, bar

Services..... Luxury Retirement Village scheme with on-site care staff (24 hours / 7 days), Non-resident management staff (24 hours, 7 days) and Careline alarm service

Accessibility.... Whole site accessible by wheelchair. Access to site easy. Distances: bus stop 20 yards; shop 0.25 mile(s); post office 0.25 mile(s); town centre 0.5 mile(s); GP 0.25 mile(s).

Lifesytle..... social activities include: Monthly calendar of events, organised by Village Manager. New residents accepted from 55 years of age. Both cats & dogs generally accepted.

Tenure(s)..... Tenure(s): Leasehold

Manager..... Audley Villages, Tel: 0800 093 8181

Manager's notes: All phases are now open at Audley St George's Place, the luxury retirement village located in the heart of Edgbaston. Just a short distance from Birmingham city centre, the village enjoys easy access to several major transport routes. St George's Place ha

West Midlands

Birmingham

ERDINGTON/NEW OSCOTT

NEW OSCOTT VILLAGE
25 Fosseway Drive, off Chester
Road, New Oscott, Birmingham,
West Midlands, B23 5LD



260 flats. Built in 2010. Sizes 1 bedroom, 2 bedroom.

Facilities..... Lift, Lounge, Dining room, Restaurant open to the public, Laundry, Guest facilities, Garden, Hobby room, Activities room, Cafe, Shop, Hairdressing salon, Bar/pub, Library, Computer room, greenhouse, woodwork room, village hall

Services..... Extra Care scheme with on-site care staff (24 hours / 7 days), Non-resident management staff (24 hours, 7 days) and Careline alarm service

Accessibility.... Whole site accessible by wheelchair. Access to site easy, but less so for less mobile people. Distances: bus stop 200 yards; shop 40 yards; post office 1 mile(s); town centre 8 mile(s); GP 1 mile(s); social centre 40 yards.

Lifesytle..... Regular social activities, organised by staff and volunteers. Meal(s) available. New residents accepted from 55 years of age. Both cats & dogs generally accepted (with permission).

Tenure(s)..... Tenure(s): Rent (social landlord) and Leasehold and Shared Ownership

Manager..... The ExtraCare Charitable Trust, Tel: 0121 377 5000

Manager's notes: The Village is owned by The ExtraCare Charitable Trust and is a partnership with Midland Heart. New Oscott Village has 260 apartments and more than 300 residents. Approximately a third of residents receive some help with their care. Dependent on your circ

West Midlands

Birmingham

LONGBRIDGE

LONGBRIDGE RETIREMENT VILLAGE

Austin Way, Longbridge, Rednal, Birmingham, B45 8TD



260 flats. Built in 2017. Sizes 1 bedroom, 2 bedroom.

Facilities..... Lift, Lounge, Restaurant open to the public, Laundry, Garden, Hobby room, Activities room, Shop, Hairdressing salon, Library, winter garden, lobby, coffee bar/bistro, village hall, greenhouse, IT suite

Services..... Extra Care scheme with on-site care staff (24 hours / 7 days), Non-resident management staff and Careline alarm service

Accessibility....

Lifesytle..... social activities include: Village Hall social activities. New residents accepted from 55 years of age.

Tenure(s)..... Tenure(s): Rent (social landlord) and Shared Ownership and Leasehold

Manager..... The ExtraCare Charitable Trust, Tel: 0121 272 4000

Manager's notes: Set on five acres fronting Lickey Road on the edge of Longbridge Town Centre, the Village provides 260 one and two bed apartments, carefully designed to encourage and support an independent and enriching lifestyle. The Village opened in July 2017. Take a

West Midlands

Birmingham

NEWTOWN

PANNEL CROFT VILLAGE

Hospital Street, Newtown, Birmingham, West Midlands, B19 2XU



180 flats. Built in 2012. Sizes 1 bedroom, 2 bedroom.

Facilities..... Lift, Lounge, Restaurant open to the public, Laundry, Guest facilities, Garden, Hobby room, Activities room, Cafe, Shop, Hairdressing salon, Bar/pub, Library, Indoor Bowling Green (within an enclosed Winter Garden), Enriched Opportunities Suite (to support

Services..... Extra Care scheme with on-site care staff (24 hours / 7 days), Non-resident management staff (24 hours, 7 days) and Careline alarm service

Accessibility....

Lifesytle..... Meal(s) available. New residents accepted from 55 years of age.

Tenure(s)..... Tenure(s): Rent (social landlord) and Shared Ownership and Leasehold

Manager..... The ExtraCare Charitable Trust, Tel: 02476 506 011

Manager's notes: Pannel Croft Village opened in 2012 and is situated in Newtown, Birmingham. The Village provides spacious homes for affordable rent and shared ownership, and a host of community-based health and leisure facilities. If you are over the age of 55, living in

West Midlands

Coventry

COVENTRY

EARLSDON PARK VILLAGE
Albany Road, Coventry, West
Midlands, CV5 6JQ



262 flats. Built in 2016. Sizes 1 bedroom, 2 bedroom.

Facilities..... Lift, Lounge, Laundry, Garden, Hobby room, Cafe, Shop, Hairdressing salon, Bar/pub, Library, Village Centre, reception, well-being suite & bathroom, IT suite, fitness suite, cash machine, greenhouse, Enriched Opportunities Suite (to support people with dem

Services..... Extra Care scheme with on-site care staff (24 hours / 7 days), Non-resident management staff and Careline alarm service

Accessibility....

Lifestyle..... New residents accepted from 55 years of age.

Tenure(s)..... Tenure(s): Shared Ownership and Leasehold and Rent (social landlord)

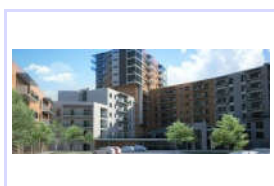
Manager..... The ExtraCare Charitable Trust, Tel: 02477 718000

Manager's notes: The Village is home to over 350 local older residents, with 262 apartments for affordable rent and purchase and a host of social and leisure facilities to enjoy. The Village is located at Earlsdon Park, on the site of the former Butts Technical College, o

Solihull

SHIRLEY

**SOLIHULL RETIREMENT
VILLAGE**
59 Haslucks Green Road,
Shirley, Solihull, West Midlands,
B90 2EL



260 flats. Built in 2020. Sizes 1 bedroom, 2 bedroom.

Facilities..... Lift, Lounge, Restaurant open to the public, Laundry, Guest facilities, Garden, Hobby room, Activities room, Cafe, Hairdressing salon, Bar/pub, Library, rooftop garden

Services..... Extra Care scheme with on-site care staff (24 hours / 7 days), Non-resident management staff (24 hours, 7 days) and Careline alarm service

Accessibility....

Lifestyle..... Meal(s) available (café bar / bistro).

Tenure(s)..... Tenure(s): Rent (social landlord) and Shared Ownership and Leasehold

Manager..... The ExtraCare Charitable Trust, Tel: 02476 506 011

West Sussex

Horsham

FAYGATE

DURRANTS VILLAGE
Faygate, Horsham, West Sussex,
RH12 4SJ



154 flats, cottages. Built in 2013. Sizes 2 bedroom, 3 bedroom.

Facilities..... Lounge, Dining room, Garden, Activities room, Swimming pool, Bar/pub, Library, medical centre

Services..... Non-resident management staff

Accessibility....

Lifestyle..... New residents accepted from 55 years of age.

Tenure(s)..... Tenure(s): Leasehold and Rent (market)

Manager..... Inspired Villages, Tel: 0800 138 0235

Manager's notes: Welcome to Durrants Village a development of high quality 2 & 3 Bedroom Cottages and 2 Bedroom Apartments set in 30 acres of landscaped grounds exclusively for the over 55s. All the properties at Durrants Village are designed with you in mind. They will b

West Sussex

Mid Sussex

EAST GRINSTEAD

CHARTERS VILLAGE

Felcourt Road, East Grinstead,
West Sussex, RH19 2JG



88 flats, bungalows. Built in 2012.

Facilities..... Lounge, Dining room, Guest facilities, Garden, Conservatory, Activities room, Bar/pub

Services..... on-site care staff (24 hours / 7 days), Non-resident management staff and Careline alarm service

Accessibility....

Lifestyle..... social activities include: a calendar of activities.

Tenure(s)..... Tenure(s): Leasehold and Rent (market)

Manager..... Retirement Villages Group Ltd, Tel: 01372 383 950

Manager's notes: Construction of Phase two of this award-winning village got under way in January 2015 to provide another 49 retirement living apartments, spread across four buildings.

Upon completion, the 16 acre site will be transformed into a state of the art retire

Linked care home

- **CHARTERS COURT NURSING & RESIDENTIAL HOME Charters Towers, Felcourt Road, East Grinstead, West Sussex RH19 2JG**

Home type . . Care home, Care home with nursing

Care for Older people generally / People with dementia

Description . . This home accommodates 60 residents in 60 single rooms (60 en suite). It was purpose built and has a garden.

Contact HC-One. Tel. 0333 999 8743

West Sussex

Mid Sussex

HAYWARDS HEATH

HURST PLACE

Kleinwort Close, Butlers Green
Road, Haywards Heath, West
Sussex, RH16 4XH



68 flats, cottages. Built in 2016. Sizes 1 bedroom, 2 bedroom.

Facilities..... Lift, Lounge, Garden, Cafe, Hairdressing salon, assisted spa

Services..... Non-resident management staff and Careline alarm service

Accessibility....

Lifestyle..... New residents accepted from 60 years of age.

Tenure(s)..... Tenure(s): Leasehold

Manager..... Anchor Hanover, Tel: 0370 218 6622

Manager's notes: Opening in Summer 2016, Hurst Place in Haywards Heath is a beautiful development of 10 courtyard houses offering everything you need to truly revel in your retirement. This is a place where you can make the most of life, surrounded by luxury and safe in

West Yorkshire

Bradford

ILLKLEY

AUDLEY CLEVEDON
Ben Rhydding Drive, Ben
Rhydding, Ilkley, West
Yorkshire, LS29 8AQ



90 flats, cottages. Built in 2009. Sizes 1 bedroom, 2 bedroom, 3 bedroom.

Facilities..... Lift, Lounge, Dining room, Restaurant open to the public, Guest facilities, Garden, Hobby room, Activities room, Cafe, Hairdressing salon, Swimming pool, Bar/pub, Library

Services..... Retirement Living scheme with on-site care staff (24 hours / 7 days), Resident management staff, Visiting management staff (24 hours, 7 days) and Careline alarm service

Accessibility.... Whole site accessible by wheelchair. Access to site fairly easy. Distances: bus stop 1 mile(s); shop 1 mile(s); post office 1.5 mile(s); town centre 2 mile(s); GP 1.5 mile(s).

Lifestyle..... Regular social activities include: Monthly calendar of events that changes every month, organised by Village Manager. Meal(s) available. New residents accepted from 60 years of age. Both cats & dogs generally accepted (Pets must be well-behaved).

Tenure(s)..... Tenure(s): Leasehold

Manager..... Audley Villages, Tel: 01943 811600

Manager's notes: On the edge of the Yorkshire Dales, just two miles from the town of Ilkley, sits the village of Ben Rhydding. It's the home of Clevedon House, a Victorian building that's been rebuilt stone by stone to become the feature building of our retirement village

West Yorkshire

Leeds

SCARCROFT

AUDLEY SCARCROFT
Hellwood Lane, Wetherby Road,
Scarcroft, Leeds, West
Yorkshire, LS14 3HS



172 flats, cottages. Built in 2021. Sizes 1 bedroom, 2 bedroom, 3 bedroom.

Facilities..... Lift, Lounge, Dining room, Restaurant open to the public, Guest facilities, Garden, Library

Services..... Retirement Village scheme with on-site care staff (24 hours / 7 days), Visiting management staff, Non-resident management staff (24 hours, 7 days) and Careline alarm service

Accessibility....

Lifestyle..... Meal(s) available (restaurant dining and bistro for light meals).

Tenure(s)..... Tenure(s): Leasehold

Manager..... Audley Villages, Tel: 0800 093 8181

Manager's notes: Situated within 110 acres of beautiful land in the village of Scarcroft, close to Leeds, this luxury village will be home to 1, 2 and 3 bedroom apartments and cottages, in and around the restored Grade II listed Scarcroft Lodge.

Experience an independe

Wiltshire

North Wiltshire

CHIPPENHAM

THE FAIRWAYS RETIREMENT VILLAGE

Malmesbury Road, Chippenham, Wiltshire, SN15 5LJ



75 flats. Built in 2014. Sizes 1 bedroom, 2 bedroom, 3 bedroom.

Facilities..... Lift, Lounge, Restaurant open to the public, Laundry, Guest facilities, Garden, Hobby room, Activities room, Shop, Jacuzzi, Swimming pool, Assisted bathing facility, Atrium, car parking, cinema, snooker room

Services..... Housing With Care scheme with on-site care staff, Visiting management staff, Non-resident management staff and Careline alarm service

Accessibility.... Access to site fairly easy.

Lifestyle..... social activities. Meal(s) available (Restaurant on site). New residents accepted from 55 years of age. Both cats & dogs generally accepted (Subject to a pet risk assessment).

Tenure(s)..... Tenure(s): Leasehold

Manager..... MHA, Tel: 01332 296 200

Manager's notes: Situated close to the attractive town of Chippenham, The Fairways is a development of a 60 place care home and 75 purpose-built one, two and three bedroom apartments and duplexes, overlooking the attractive adjoining golf course. Surrounded by attractive

Linked care home

- **THE FAIRWAYS Malmesbury Road, Chippenham, Wiltshire SN15 5LJ**

Home type . . . Care home, Care home with nursing

Care for Older people generally / People with dementia

Description . . This home accommodates 60 residents in 60 single rooms (60 en suite). It was purpose built in 2013 and has a garden.

Contact Methodist Homes. Tel. 01249 705060.

Wiltshire

North Wiltshire

CORSHAM

WADSWICK GREEN RETIREMENT VILLAGE

Rowan Lane, Corsham, Wiltshire, SN13 9RD



242 flats. Built in 2015. Sizes 1 bedroom, 2 bedroom, 3 bedroom.

Facilities..... Lift, Lounge, Restaurant open to the public, Garden, Shop, Swimming pool, Bar/pub, Library, Terrace, Spa, craft room, allotments

Services..... Extra Care scheme with on-site care staff (24 hours / 7 days), Non-resident management staff and Careline alarm service

Accessibility....

Lifestyle..... Meal(s) available. New residents accepted from 60 years of age.

Tenure(s)..... Tenure(s): Leasehold

Manager..... Rangeford Villages Ltd, Tel: 0800 135 7420

Manager's notes: Wadswick Green is a beautiful contemporary village with 1, 2 and 3 bed apartments, created in the heart of the Wiltshire countryside, just eight miles from Bath, with spacious luxury homes built especially for you.

Set among 25 acres of landscaped, spa

Wiltshire

West Wiltshire

LIMPLEY STOKE

AVONPARK VILLAGE
Winsley Hill, Limpley Stoke,
Bath, Avon, BA2 7FF



91 flats. Built in 1994 and renovated in 2011. Sizes studio, 1 bedroom, 2 bedroom, 3 bedroom. Includes mobility and wheelchair standard properties.

Facilities..... Lift, Lounge, Dining room, Restaurant open to the public, Laundry, Guest facilities, Garden, Conservatory, Activities room

Services..... Non-resident management staff

Accessibility.... Access to site fairly easy. Distances: bus stop 200 yards; shop 0.5 mile(s); post office 0.5 mile(s); town centre 2 mile(s); social centre 2 mile(s).

Lifestyle..... Frequent social activities include: bridge, concerts, visiting speakers, drink parties, excursions to theatres and places of interest, shopping trips, organised by management. New residents accepted from 55 years of age. Both cats & dogs generally accept

Tenure(s)..... Tenure(s): Leasehold and Rent (market)

Manager..... Retirement Villages Group Ltd, Tel: 01372 383 950

Manager's notes: Just 6 miles from Bath and offering stunning views across the Avon Valley, Avonpark Village is an established community for the over 55's, comprising of 91 studio flats, apartments and houses.

Since its acquisition by Retirement Villages Ltd in 2010,

Worcestershire

Malvern Hills

MALVERN

CLARENCE PARK VILLAGE
415 Worcester Road, Malvern,
Worcestershire, WR14 1DG



101 flats. Built in 2014. Sizes 1 bedroom, 2 bedroom.

Facilities..... Lift, Lounge, Restaurant open to the public, Garden, Conservatory, Hobby room, Activities room, Hairdressing salon, Bar/pub, Library, IT suite, greenhouse, and care parking around the scheme

Services..... Extra Care scheme with on-site care staff (24 hours / 7 days), Non-resident management staff (24 hours, 7 days) and Careline alarm service

Accessibility.... Whole site accessible by wheelchair.

Lifestyle..... Meal(s) available. New residents accepted from 55 years of age.

Tenure(s)..... Tenure(s): Rent (social landlord) and Shared Ownership and Leasehold

Manager..... Fortis Living, Tel: 0330 123 0700

Manager's notes: Clarence Park Village located in the delightful Victorian spa town of Malvern at the foot of the beautiful Malvern Hills is designed to give people over 55 the chance to live independent lives free from many of the worries associated with getting older in

MALVERN

AUDLEY ELLERSLIE
Abbey Road, Malvern,
Worcestershire, WR14 3HL



101 flats. Built in 2018. Sizes 1 bedroom, 2 bedroom, 3 bedroom.

Facilities..... Lift, Lounge, Restaurant open to the public, Guest facilities, Garden, Hobby room, Activities room, Cafe, Hairdressing salon, Swimming pool, Bar/pub, Library

Services..... Luxury Retirement Village scheme with on-site care staff (24 hours / 7 days), Resident management staff, Visiting management staff (24 hours, 7 days) and Careline alarm service

Accessibility....

Lifestyle..... New residents accepted from 60 years of age.

Tenure(s)..... Tenure(s): Leasehold

Manager..... Audley Villages, Tel: 0800 093 8181

Manager's notes: Audley Ellerslie retirement village is a luxury development of 101 one, two and three bedroom properties. The village is located in Great Malvern and set against the spectacular backdrop of the glorious Worcestershire countryside. Three grand Victorian mansion

Worcestershire

Wychavon

EVESHAM

RICHMOND WOOD NORTON
Evesham Road, Wood Norton,
Evesham, Worcestershire, WR11
4TY



107 flats. Built in 2019. Sizes 2 bedroom.

Facilities..... Lift, Lounge, Restaurant open to the public,
Laundry, Garden, Activities room, Cafe,
Hairdressing salon, Swimming pool, Bar/pub,
Library, Wellness spa, parking facilities

Services..... Extra Care scheme with on-site care staff (24
hours / 7 days), Non-resident management staff
and Careline alarm service

Accessibility....

Lifestyle..... social activities. Meal(s) available. New
residents accepted from 55 years of age. Both
cats & dogs generally accepted, but not to be
replaced.

Tenure(s)..... Tenure(s): Leasehold

Manager..... Richmond Villages, Tel: 01386 862222

Manager's notes: Redefining retirement living, Richmond Wood
Norton is a new luxury retirement village located in the
picturesque Vale of Evesham, between the towns of Evesham
and Pershore. Richmond Wood Norton opened in 2019 and
offers a choice of exemplary accommodatio

Linked care home

- **RICHMOND WOOD NORTON Evesham Road, Wood Norton,
Evesham, Worcestershire WR11 4TY**

Home type . . . Care home

Care for Older people generally / People with dementia

Description . . . This home accommodates 60 residents in 60 single rooms
(60 en suite). It was purpose built in 2019 and has a garden.

Contact Richmond Villages. Tel. 0113 495 0742