



New Larchwood

Waldron Avenue, Coldean, Brighton, East Sussex BN1 9EZ.

[View on a map](#)

Manager: Hanover, Nelson House, Alington Road, Eynesbury, St Neots, Cambridgeshire PE19 6RE

Telephone: 0800 280 2575

Email: lettings&enquiries@hanover.org.uk

Web: <http://www.hanover.org.uk/>.

Developer: Hanover, <http://www.hanover.org.uk/>.



Manager:



Developer:



Memberships



More info

- [Map](#)
- [Aims](#)
- [Buildings](#)
- [Services](#)
- [Residents](#)
- [Mgt/costs](#)

Update

- [Update info](#)
- [Add vacancies](#)

Type(s): Extra care housing.

Properties: 38 flats. Sizes 1bed, 2bed. Built in 2006.

Services: Extra Care scheme with on-site care staff (24 hours / 7 days), non-resident management staff and community alarm service.

Facilities: Lift, lounge, dining room, laundry, guest facilities, garden, hobby room, activities room, cafe, shop, hairdressing salon, library.

Accessibility: Access to site fairly easy. Distances: bus stop 200 yards; shop 100 yards; post office 100 yards; town centre 3 mile(s); GP 10 yards; social centre 3 mile(s).

Lifestyle: Regular social activities include gentle exercise, supper club, beetle drive, bingo, games, coffee morning, art class, computer class, cinema club and boccea., organised by Residents, volunteers, community participation worker and support worker.. Some meals available (main meal at lunch time, served at 12.30). New residents accepted from 60 years of age. Both cats & dogs accepted, Hanover has a pet policy.

Tenure: Rent (social landlord).

Cost: From £441.08 per month excl. service charge at Mar 2011.

Care provider: Independence at Home team.

Info updated: 14/03/2011.

Properties available

Check with Manager above - none notified to EAC.

Additional resources

Facility brochures:

<http://www.housingcare.org/downloads/facilities/brochures/87816.pdf>

Floor plans:



Archadia Chartered Architects
 Architects - Surveying - Interior - Space Planning - Design
 ASHLEY HOUSE, 59-61 ASHLEY RD, HAMPTON,
 MIDDLESEX, TW20 2NF. Tel: 020 89 43001 Fax: 020 89 43002

Client: Harrow Housing Association
 Project: Larchwood, Colson, Brighton

Title: Lower Ground Floor Plan - Feasibility Study B

Scale: 1:200
 Drawing No: HH330/02
 Date: 5 Nov 02
 Rev: B



Archadia Chartered Architects
 Architects - Surveying - Interior - Space Planning - Design
 ASHLEY HOUSE, 59-61 ASHLEY RD, HAMPTON,
 MIDDLESEX, TW20 2NF. Tel: 020 89 43001 Fax: 020 89 43002

Client: Harrow Housing Association
 Project: Larchwood, Colson, Brighton

Title: Upper Ground Floor Plan - Feasibility Study B

Scale: 1:200
 Drawing No: HH330/03
 Date: 5 Nov 02
 Rev: B

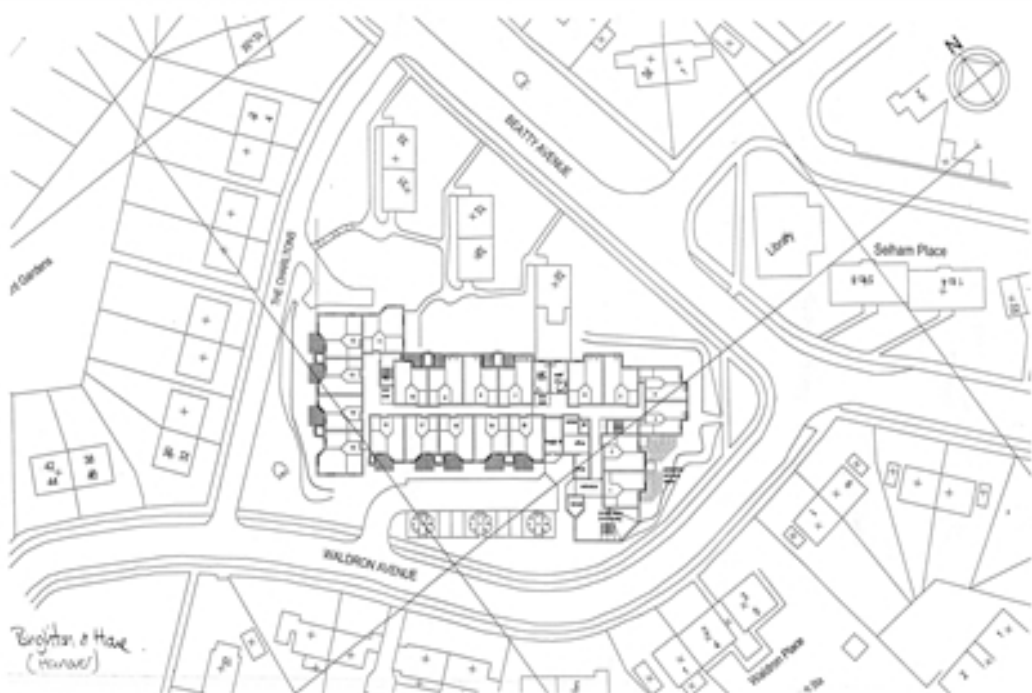


Archadia Chartered Architects
 Architects - Surveyors - Interior - Space Planning - Design
 ASHLEY HOUSE, 39-41 ASHLEY RD, HAMPTON,
 MIDDLESEX, TW20 2NF. Tel: 020 89 43301 Fax: 020 89 43302

Client: Harrow Housing Association
 Project: Larchwood, Colindale, Brighton

Title: First Floor Plan - Feasibility Study B

Scale: 1:200
 Draw No: HR-330/04
 Date: 1 Nov 11
 Rev: B



Brighton & Hove (Houses)

Archadia Chartered Architects
 Architects - Surveyors - Interior - Space Planning - Design
 ASHLEY HOUSE, 39-41 ASHLEY RD, HAMPTON,
 MIDDLESEX, TW20 2NF. Tel: 020 89 43301 Fax: 020 89 43302

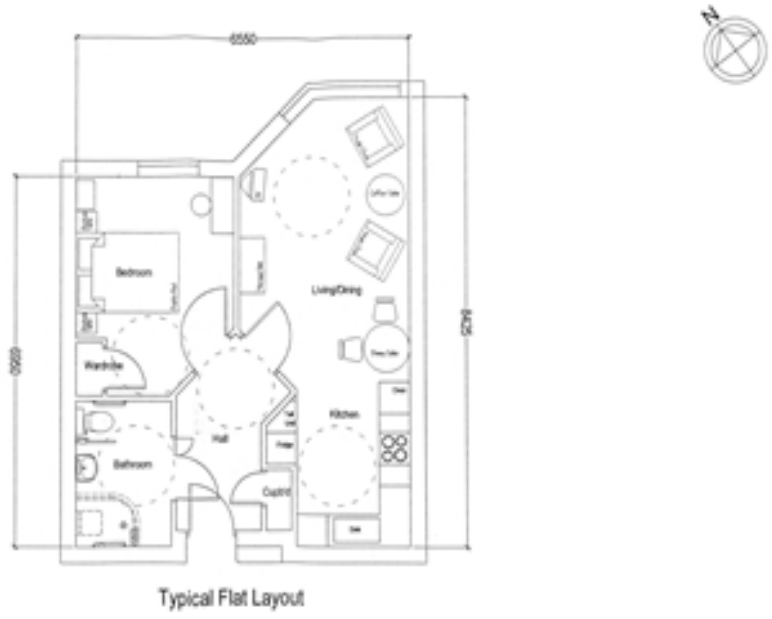
Client: Harrow Housing Association
 Project: Larchwood, Colindale, Brighton

Title: Proposed Site Plan - Feasibility Study B

Scale: 1:500
 Draw No: HR-330/01
 Date: 5 Nov 11
 Rev: B



A leader in information and advice to older people



Archadia Chartered Architects
 Architects - Surveyors - Interior - Space Planning - Design
 ASHLEY HOUSE, 20-40 ASHLEY RD, HAMPTON,
 MIDDLESEX, TW20 2JG. Tel: 020 89 41000 Fax: 020 89 41009

Client: Harrow Housing Association
 Project: Larchwood, Colindale, Brighton

Title: Flat layout - Feasibility Study B

Scale: 1:50
 Draw No: HH33006
 Date: 5 Nov 09
 Rev: B

<http://www.housingcare.org/downloads/facilities/floor-plans/87816.pdf>

Reviews:

<http://www.housingcare.org/downloads/facilities/reviews/87816.pdf>

Photos:











Web link: <http://www.housingcare.org/hc/link-info-87816.aspx>
Map link: <http://www.housingcare.org/hc/link-map-87816.aspx>