



## St Crispin Village

St Thomas Street, Off St Crispin Drive, Duston,  
Northampton NN5 6JF. [View on a map](#)

**Manager:** ExtraCare Charitable Trust, Abbey Park, Humber  
Road, Coventry CV3 4AQ

**Telephone:** 02476 506 011

**Email:** [betterlives@extracare.org.uk](mailto:betterlives@extracare.org.uk)

**Web:** <http://www.extracare.org.uk>.



### Manager:



### More info

- [Map](#)
- [Aims](#)
- [Buildings](#)
- [Services](#)
- [Residents](#)
- [Mgt/costs](#)

### Update

- [Update info](#)
- [Add vacancies](#)

**Type(s):** Extra care housing.

**Properties:** 270 flats, bungalows. Sizes 1bed, 2bed. Built in 2006.

**Services:** Extra Care scheme with on-site care staff (24 hours / 7 days), non-resident management staff (24 hours, 7 days) and community alarm service.

**Facilities:** Lift, lounge, dining room, laundry, guest facilities, garden, hobby room, cafe, shop, hairdressing salon, jacuzzi, bar/pub, library, assisted bathing facility.

**Accessibility:** Whole site accessible by wheelchair. Access to site easy. Distances: bus stop 100 yards; post office 1 mile(s); town centre 3 mile(s); GP 1 mile(s).

**Lifestyle:** Regular social activities include 10 activities per day, organised by ExtraCare Charitable Trust staff and residents. Some meals available (on site restaurant). New residents accepted from 55 years of age. Both cats & dogs generally accepted.

**Tenure:** Rent (social landlord) and Shared Ownership and Leasehold.

**Manager's notes:** This village development is a partnership between Touchstone Housing Association, Northampton Borough Council, Northamptonshire County Council and The ExtraCare Charitable Trust. It is home to more than 300 local older people and will also be used by hundreds more people from the wider community who will be able to visit on a daily basis. The facilities in the Village will include a restaurant, bar, village hall, gym and Jacuzzi.

**Care provider:** ExtraCare Charitable Trust.

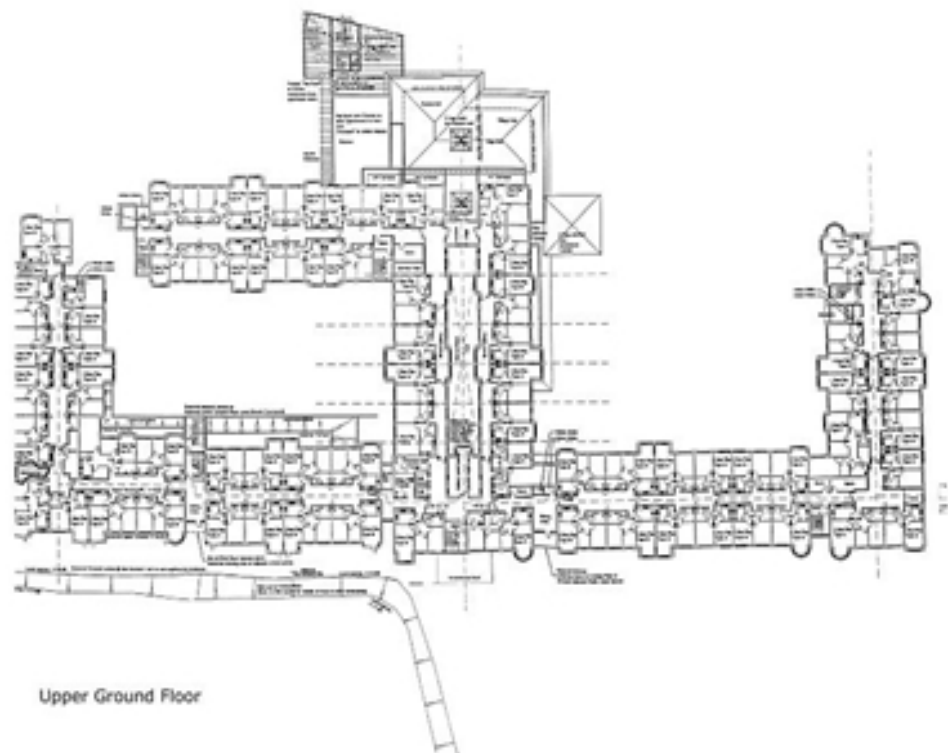
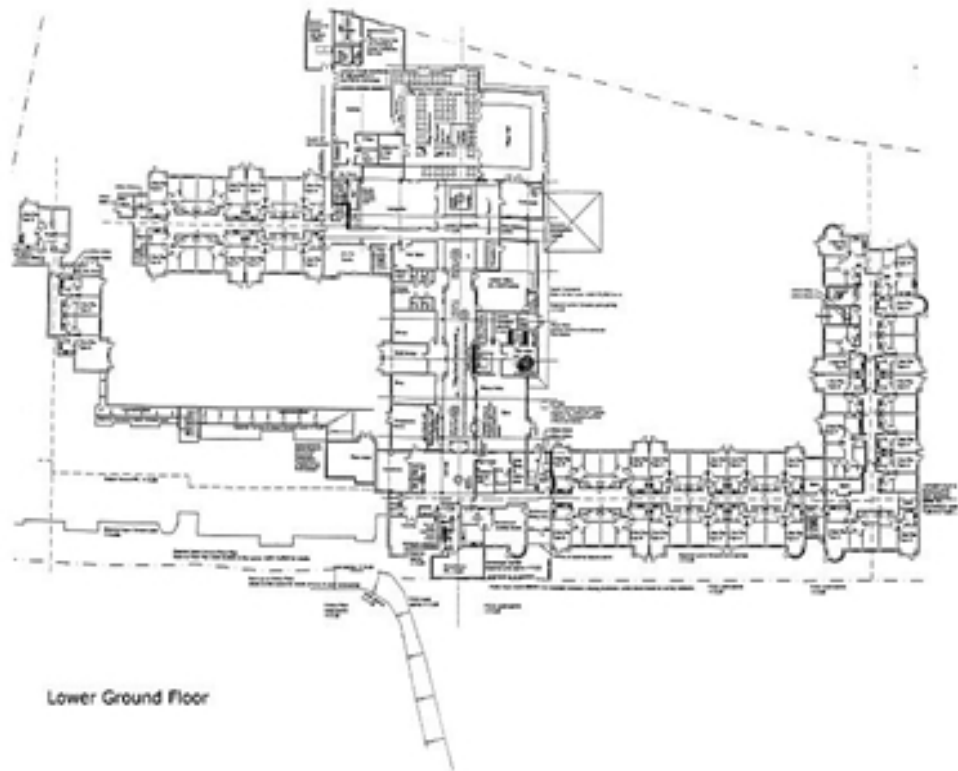
**Info updated:** 24/08/2011.

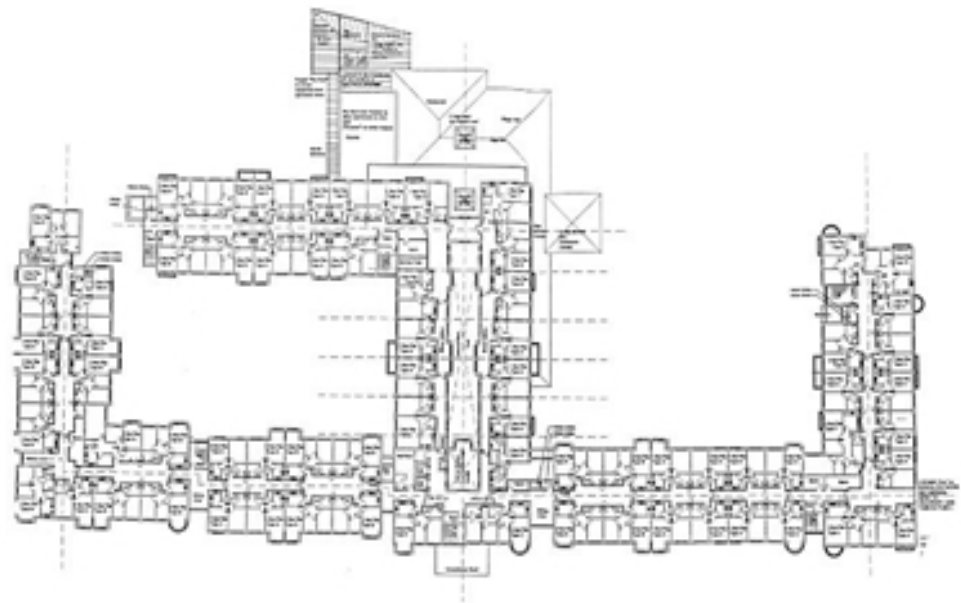
### Properties available

Check with Manager above - none notified to EAC.

## Additional resources

### Floor plans:

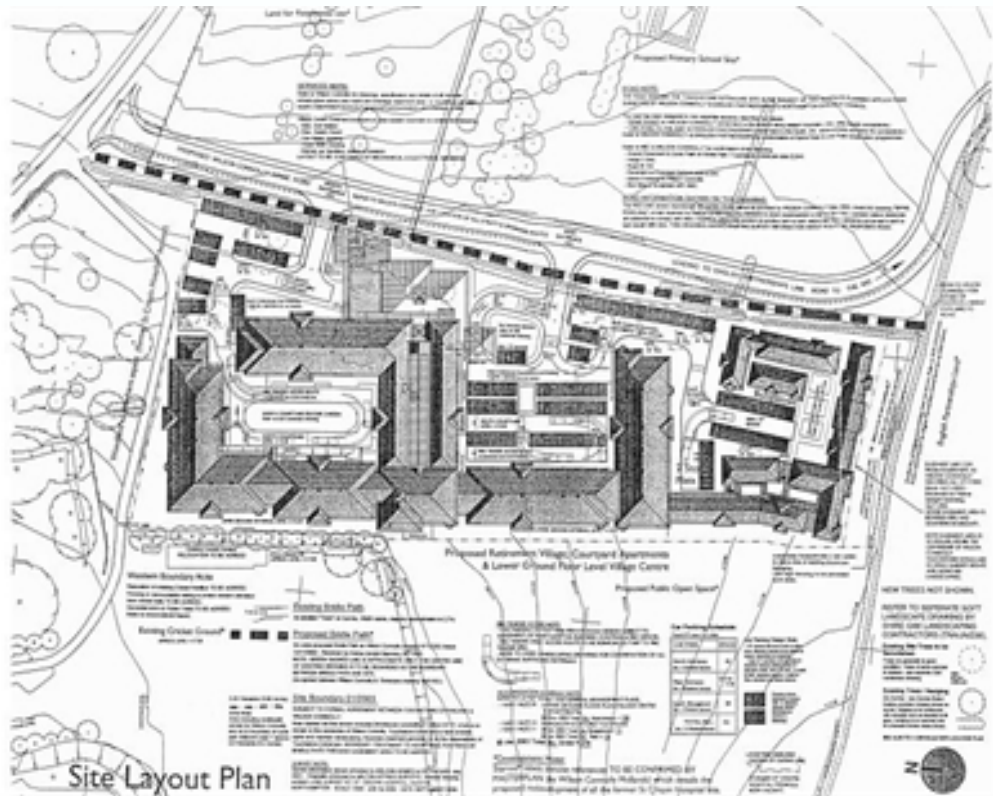




First Floor



Ground Level Layout



Site Layout Plan

Photos:











Web link: <http://www.housingcare.org/hc/link-info-87541.aspx>  
Map link: <http://www.housingcare.org/hc/link-map-87541.aspx>