



Bushmead Court

Hancock Drive, Bushmead, Luton, Beds LU2 7GY. [View on a map](#)

Manager: Retirement Security Ltd, 18 Wood Street, Stratford-upon-Avon, Warwickshire CV37 6JF

Telephone: 0800 389 9384

Email: mail@retirementsecurity.co.uk

Web: <http://www.retirementsecurity.co.uk/>.

Manager:



Memberships



Update

- [Update info](#)
- [Add vacancies](#)

Type(s):	Housing with care.
Properties:	41 flats. Built in 2002. Sizes 1 bedroom, 2 bedroom. Includes mobility and wheelchair standard properties.
Services:	Very Sheltered scheme with on-site care staff (24 hours / 7 days), non-resident management staff (24 hours, 7 days) and community alarm service.
Facilities:	Lift, lounge, dining room, laundry, guest facilities, garden, hobby room.
Accessibility:	Whole site accessible by wheelchair. Access to site easy. Distances: bus stop 60 yards; shop 30 yards; post office 1 mile(s); town centre 70 yards; GP 100 yards; social centre 40 yards.
Lifestyle:	Regular social activities include games, bingo, quiz nights, fellowship club, keep fit. Some meals available (3 course lunch, every day). New residents accepted from 60 years of age. Both cats & dogs generally accepted.
Tenure:	Leasehold.
Manager's notes:	Set in landscaped grounds.
Care provider:	Retirement Security Ltd.
Info updated:	14/02/2011.

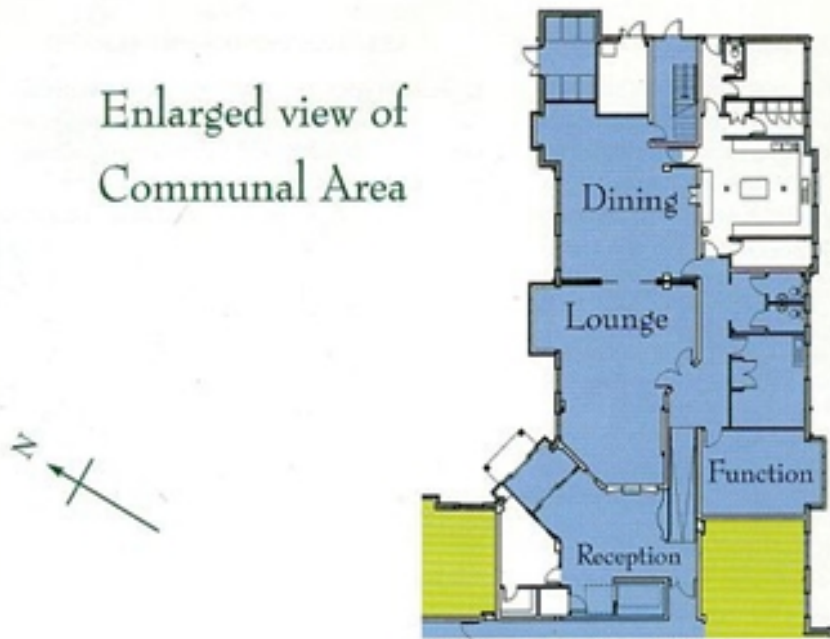
Properties available

Resales: None currently available. Contact Retirement Security Sales Office on Freephone 0800 389 9384. (Notified 08/02/2012).

Additional resources

Floor plans:

Enlarged view of Communal Area



Ground Floor Plan



The numbering of the Apartments has been determined by the Post Office.

Page 8



Apartments

THE FOLLOWING PLANS give a general indication of the layout of different types of apartment, but almost every apartment has its own individual features. A detailed layout of each apartment is available from the Sales Office at Bushmead Court.

Apartment 14 (Show Apartment)

Two bedroom apartment
with bath, walk-in shower
and separate wc

MAXIMUM DIMENSIONS		
Lounge	14' x 13'5"	4260mm x 4075mm
Bedroom 1	12' x 10'2"	3605mm x 3100mm
Bedroom 2	12'10" x 9'1"	3900mm x 2775mm
Kitchen	10'4" x 8'	3160mm x 2450mm
Bathroom	8' x 12'	2450mm x 3650mm
WC	4'1" x 5'7"	1250mm x 1700mm



Apartment 15

Two bedroom apartment



MAXIMUM DIMENSIONS	
Lounge	11'7" x 15'3" 3525mm x 4655mm
Bedroom 1	9'9" x 12'10" 2975mm x 3900mm
Bedroom 2	9'1" x 14'3" 2775mm x 4350mm
Kitchen	8' x 10'2" 2425mm x 3105mm
Bathroom	10'2" x 8' 3100mm x 2450mm



Apartment 45

One bedroom apartment
with bath and walk-in shower

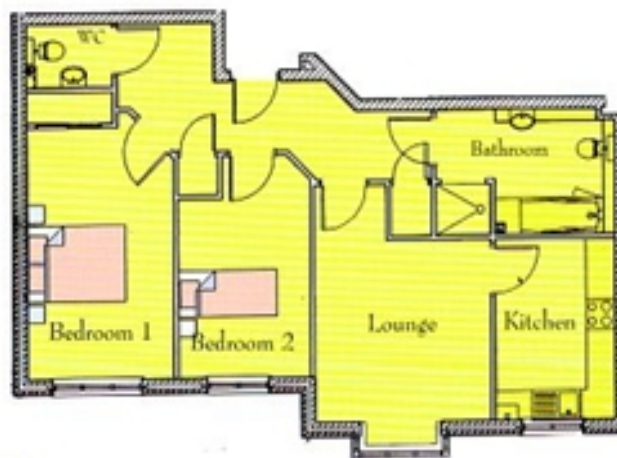
MAXIMUM DIMENSIONS		
Lounge	14' x 12'3"	4255mm x 3738mm
Bedroom 1	12'10" x 9'11"	3900mm x 3013mm
Kitchen	10'4" x 8'	3154mm x 2450mm
Bathroom	8' x 11'1"	2450mm x 3375mm




Apartment 61

Two bedroom apartment

Second Floor larger apartment
with bath, walk-in shower and separate wc



MAXIMUM DIMENSIONS	
Lounge	11'9" x 11'8" 3580mm x 3545mm
Bedroom 1	9'9" x 16'2" 2980mm x 4925mm
Bedroom 2	8'9" x 11'6" 2670mm x 3505mm
Kitchen	8' x 11'8" 2450mm x 3545mm
Bathroom	8' x 12' 2450mm x 3650mm
WC	5'9" x 4'1" 1750mm x 1250mm

 THE PURCHASE PRICE of each apartment includes carpets and curtains, the range of which is available for inspection in the Sales Office at Bushmead Court.

The kitchen of each apartment includes a cooker, fridge/freezer and washing machine.

All of the communal areas are fully furnished and equipped to the highest standard.

Page 11



Apartment 45

One bedroom apartment
with bath and walk-in shower



MAXIMUM DIMENSIONS

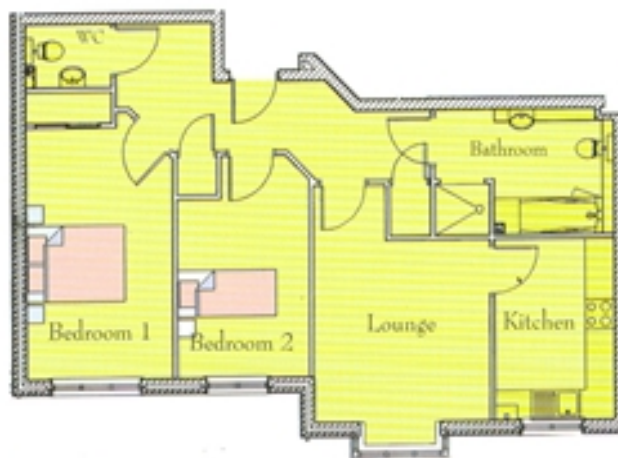
Lounge	14' x 12'3"	4255mm x 3738mm
Bedroom 1	12'10" x 9'11"	3900mm x 3013mm
Kitchen	10'4" x 8'	3154mm x 2450mm
Bathroom	8' x 11'1"	2450mm x 3375mm



Apartment 61

Two bedroom apartment

Second Floor larger apartment
with bath, walk-in shower and separate wc



MAXIMUM DIMENSIONS

Lounge	11'9" x 11'8"	3580mm x 3545mm
Bedroom 1	9'9" x 16'2"	2980mm x 4925mm
Bedroom 2	8'9" x 11'6"	2670mm x 3505mm
Kitchen	8' x 11'8"	2450mm x 3545mm
Bathroom	8' x 12'	2450mm x 3650mm
WC	5'9" x 4'1"	1750mm x 1250mm

 THE PURCHASE PRICE of each apartment includes carpets and curtains, the range of which is available for inspection in the Sales Office at Bushmead Court.

The kitchen of each apartment includes a cooker, fridge/freezer and washing machine.

All of the communal areas are fully furnished and equipped to the highest standard.

Page 11

Photos:







Web link: <http://www.housingcare.org/hc/link-info-85762.aspx>
Map link: <http://www.housingcare.org/hc/link-map-85762.aspx>