



Patching Lodge

Freshfield Road, Kemp Town, Brighton BN2 0DD. [View on a map](#)

Manager: Hanover, The Wave, 1 View Croft Road, Shipley, West Yorkshire BD17 7DU

Telephone: 0800 280 2575

Email: lettings&enquiries@hanover.org.uk

Web: <http://www.hanover.org.uk/>.

Developer: Hanover, <http://www.hanover.org.uk/>.



Manager:



Developer:



Memberships



More info

- [Map](#)
- [Aims](#)
- [Buildings](#)
- [Services](#)
- [Residents](#)
- [Mgt/costs](#)

Update

- [Update info](#)
- [Add vacancies](#)

Type(s): Extra care housing.

Properties: 76 flats. Sizes 1bed, 2bed. Built in 2009.

Services: Extra Care scheme with on-site care staff (24 hours / 7 days), non-resident management staff and community alarm service.

Facilities: Lift, lounge, dining room, laundry, guest facilities, garden, hobby room, activities room, cafe, shop, hairdressing salon, library.

Accessibility: Access to site fairly easy. Distances: bus stop 50 yards; shop 500 yards; post office 500 yards; town centre 1 mile(s); social centre 1 mile(s).

Lifestyle: Regular social activities include cinema, coffee mornings, organised by residents and local groups. Some meals available (main meal at lunchtime). New residents accepted from 60 years of age. Both cats & dogs accepted (not to be replaced).

Tenure: Rent (social landlord) and Shared Ownership and Leasehold.

Manager's notes: Patching Lodge is a new facility for Extra Care. Occupation is expected to begin as early as May 2009. As the scheme is not yet open, the rents and charges have yet to be determined.

Care provider: Brighton & Hove City Council.

Info updated: 14/03/2011.

Properties available

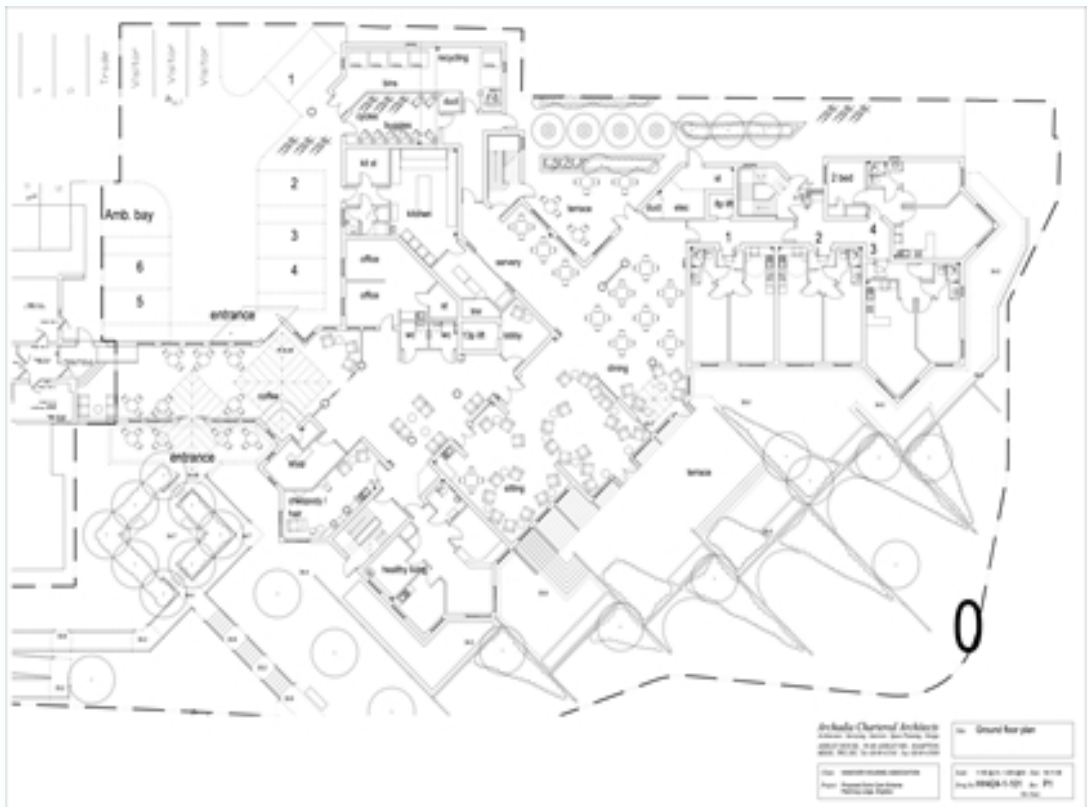
Check with Manager above - none notified to EAC.

Additional resources

Facility brochures:

<http://www.housingcare.org/downloads/facilities/brochures/116281.pdf>

Floor plans:













Web link: <http://www.housingcare.org/hc/link-info-116281.aspx>
Map link: <http://www.housingcare.org/hc/link-map-116281.aspx>