



Inglewood

Templeton Road, Kintbury, Hungerford, Berkshire RG17 9SW. [View on a map](#)

Manager: Audley, Swan Court, Waterman's Business Park, Kingsbury Crescent, Staines, Middlesex TW18 3BA

Telephone: 01784 457 615

Email: info@audleyretirement.co.uk



Manager:

AUDLEY LIFE

More info

- Map
- Aims
- Buildings
- Services
- Residents
- Mgt/costs

Update

- Update info
- Add vacancies

Type(s):	Housing with care, Extra care housing.
Properties:	96 flats, houses. Sizes 1bed, 2bed. Built in 2011.
Services:	Extra Care scheme with 24 hours / 7 days), non-resident management staff (24 hours, 7 days) and community alarm service.
Facilities:	Lift, lounge, dining room, restaurant, guest facilities, garden, hobby room, activities room, hairdressing salon, swimming pool, bar/pub, library.
Accessibility:	Access to site easy, but less so for less mobile people. Distances: bus stop 1 mile(s); shop 1 mile(s); post office 1 mile(s); town centre 4 mile(s); GP 1 mile(s); social centre 4 mile(s).
Lifestyle:	Some meals available. New residents accepted from 55 years of age. Both cats & dogs accepted, Pets must be well-behaved.
Tenure:	Leasehold.
Manager's notes:	Inglewood is surrounded by its own 39-acre estate in the friendly village of Kintbury. This former luxury health spa with landscaped gardens will be home to 9 cottages and 87 apartments, offering a rural idyll that also has convenient motorway and mainline rail links.
Care provider:	Audley Care.
Info updated:	12/05/2010.

Properties available

Check with Manager above - none notified to EAC.

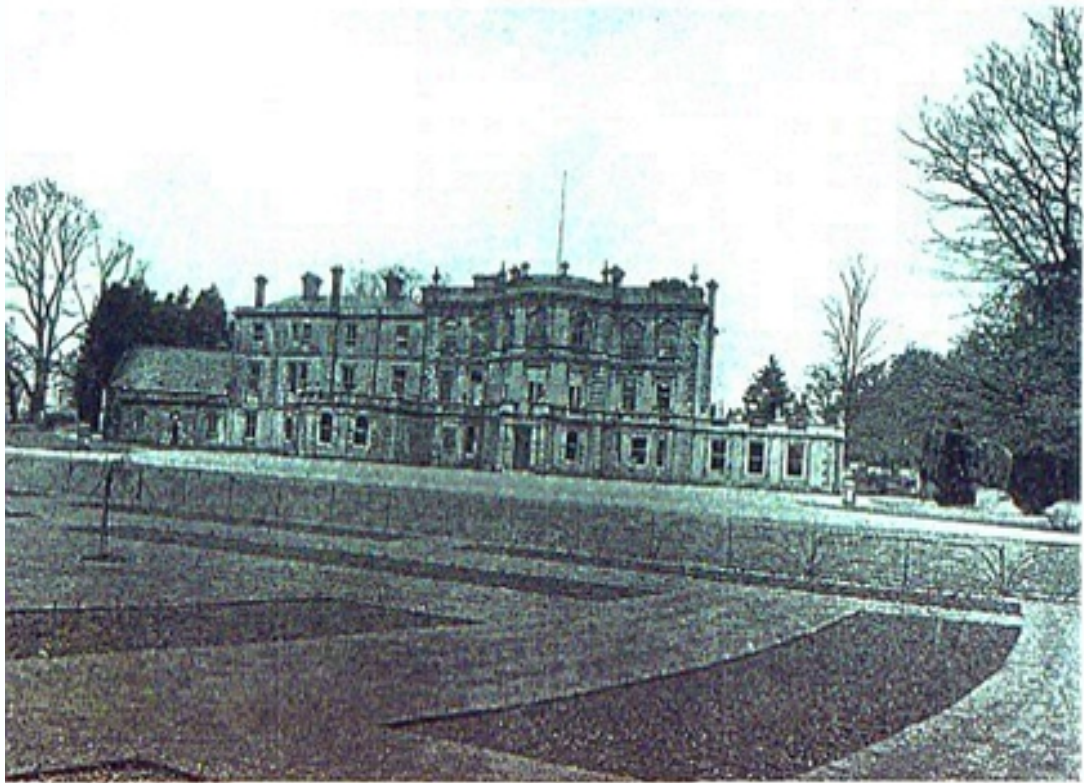
Additional resources

Facility brochures: <http://www.housingcare.org/downloads/facilities/brochures/116069.pdf>

Floor plans: <http://www.housingcare.org/downloads/facilities/floor-plans/116069.pdf>

Photos:





Web link: <http://www.housingcare.org/hc/link-info-116069.aspx>
Map link: <http://www.housingcare.org/hc/link-map-116069.aspx>