



BALMORAL  
PLACE

**MEARS**®

*Welcome to*

# BALMORAL

==== **PLACE** ====

A community of Homes with  
Care in the heart of Northampton.

## **What is Housing with Care?**

**'Housing with Care' offers an alternative to residential care homes for people who have been assessed to have a care or support need.**

Sensitively built as small, secure communities, Housing with Care developments combine self-contained homes to rent with communal facilities and on-site care provision, all purposely designed to enable you to continue living independently in a home of your own for as long as you want to.



HOME  
SWEET  
HOME



*Balmoral Place is located in a vibrant community at the heart of Northampton, easily accessible and close to local amenities.*



## Balmoral Place offers:



80 individual, one-bedroomed apartments



Communal gardens and meeting spaces



Care packages tailored around your needs



Social events and activities programme



Secure entry phone system and CCTV



Fully wheelchair accessible



Mobility scooter storage and charging



Laundry facilities



Hairdressing Salon



On-site cafe



Adaptable kitchens

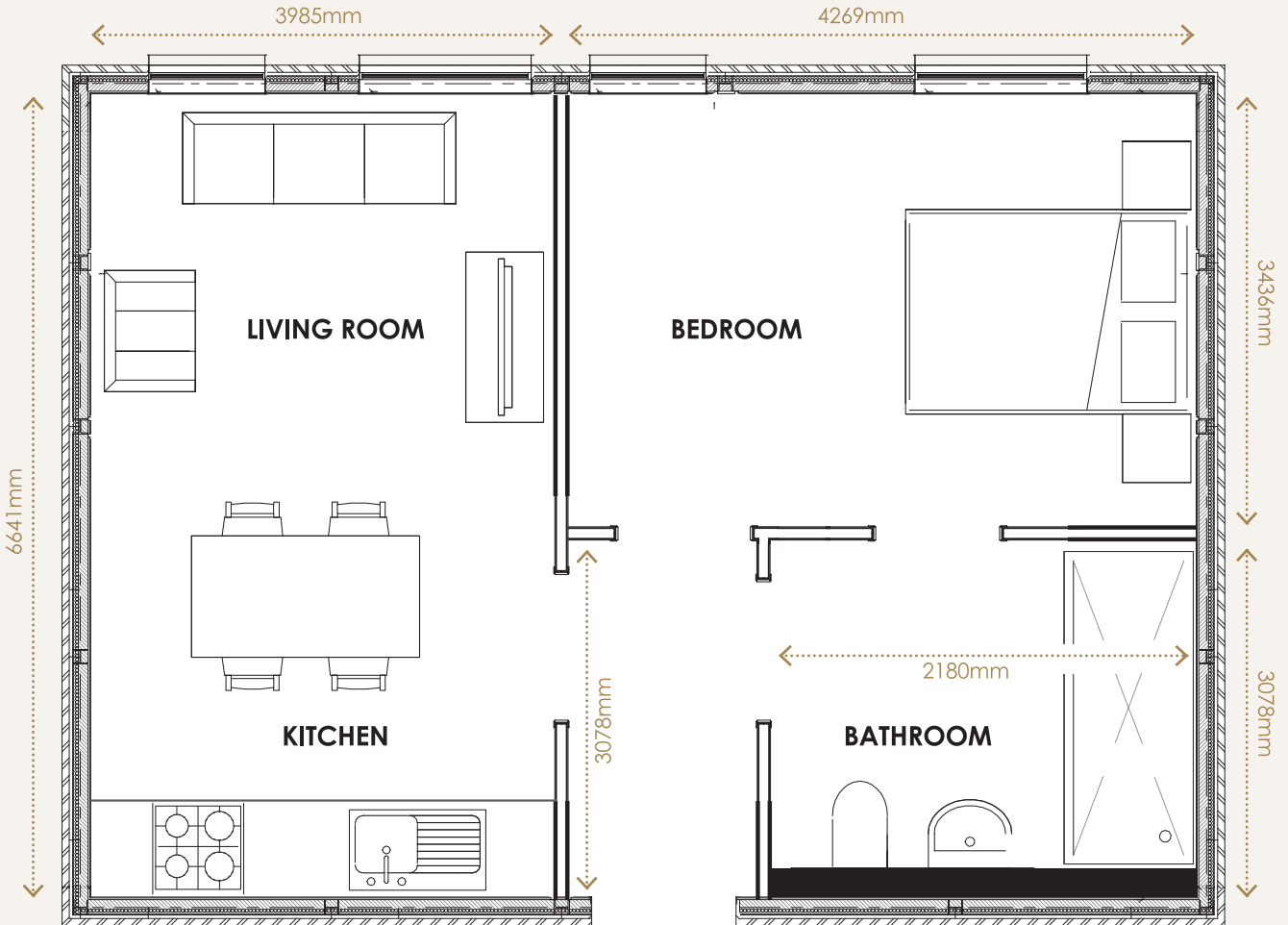


Guest accommodation



On-site care and housing support team

# ONE BEDROOM APARTMENT

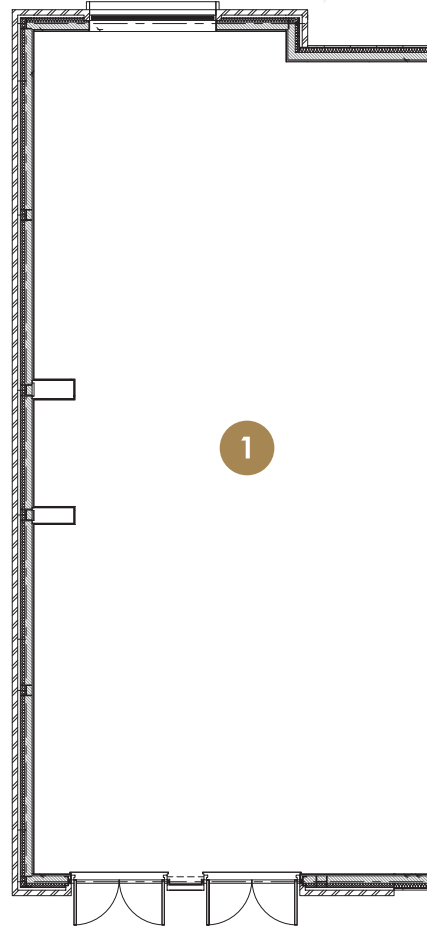
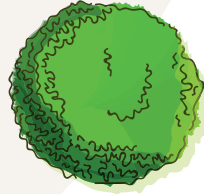


\* This is a typical layout. Actual floorplan may differ.

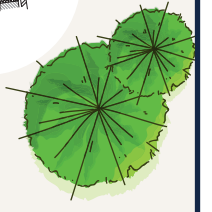
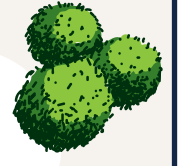
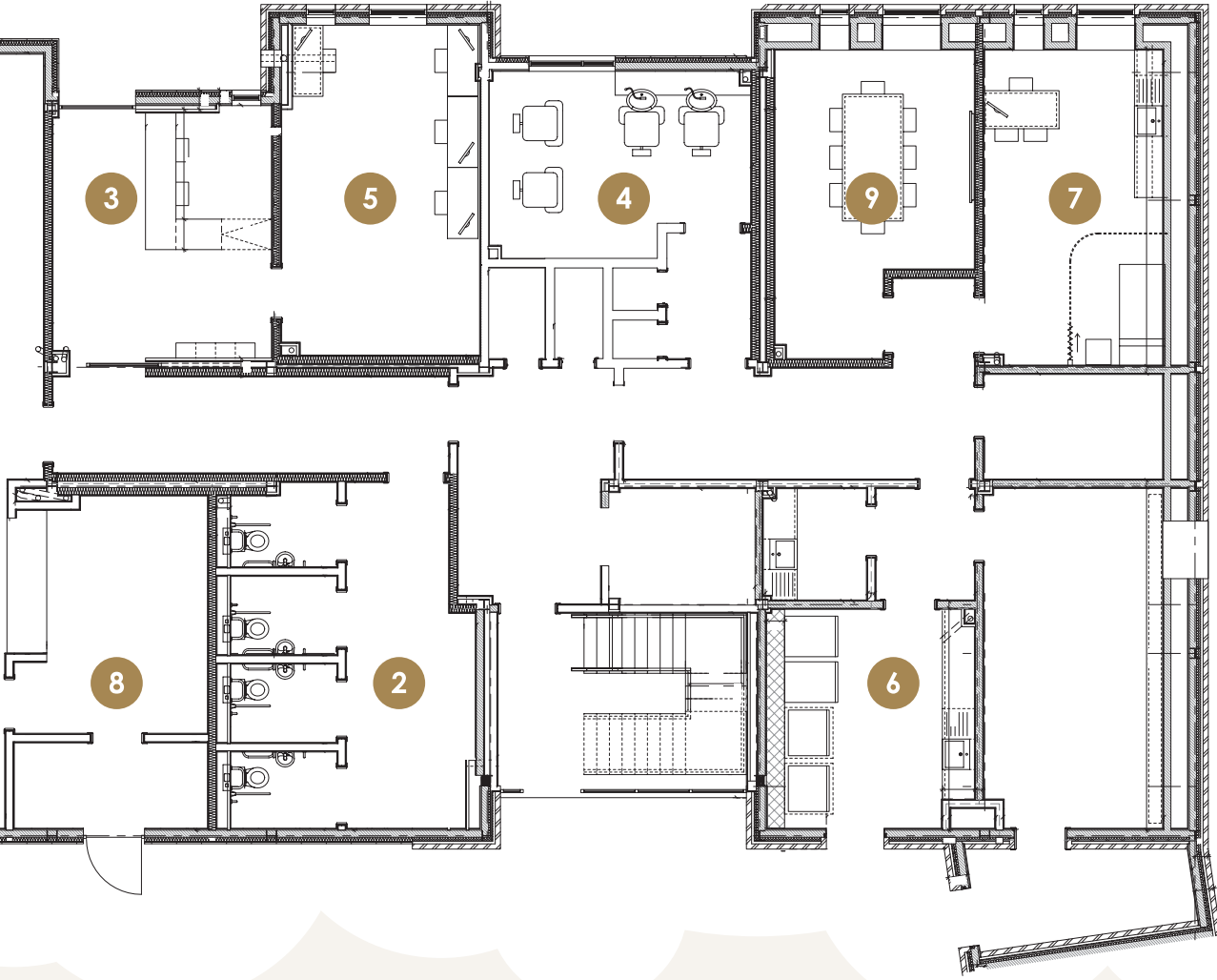
# COMMUNAL AREAS



- |   |                                 |   |                 |
|---|---------------------------------|---|-----------------|
| 1 | COMMUNAL LOUNGE AND DINING AREA | 6 | LAUNDRY ROOM    |
| 2 | COMMUNAL TOILETS                | 7 | ASSESSMENT ROOM |
| 3 | MAIN ENTRANCE                   | 8 | KITCHEN         |
| 4 | SALON                           | 9 | TRAINING ROOM   |
| 5 | OFFICE                          |   |                 |







# YOUR LIFE AT BALMORAL PLACE



As a resident at Balmoral Place, you will have a safe, comfortable place to call home. You will be part of a vibrant community, and have 24-hour access to on-site care and support services that can be tailored to your needs.





## THE COMMITMENT WE MAKE TO YOU IS:



To promote independence, choice and control for you.



To reduce the need for residential care placements and hospital admissions.



To offer a home for life that responds to your needs.



To create a vibrant community for you to be a part of when you choose so you never have to feel alone.



# QUALITY HOMES AND CARE



With over 20 years' experience of providing services, we are one of the leading care providers in the UK, committed to not only providing the best-quality service and outcomes for individuals, but also making a positive difference in the communities we serve.

**At Balmoral Place, our team can help you with the following:**



**Getting in and out of bed**



**Using the toilet and continence care**



**Washing and bathing**



**Medication management**



**Dressing and undressing**



**Housework**



**Eating and drinking**



**Laundry**



**Nutrition and fluid intake**



**Accessing the wider community and social activities**



**Running errands and correspondence**








**Making and getting to appointments**

## AM I ELIGIBLE?



Extra care is an affordable lifestyle choice, open to both self-funders and local authority nominees, who...

-  Are 55 and over
-  Are looking for affordable rents
-  May have a personal care need, now or in the future
-  Want to live in a home of their own but with care and support when they need it
-  Want to plan for a future with peace of mind

**BALMORAL**  
PLACE









*A safe, comfortable place to call home.*

*Find out more*

**If you are interested in living at Balmoral Place,  
we'd love to hear from you.**

To arrange a viewing or to find out more,  
please contact us.

**0370 191 0000**

**[enquiries.balmoral@mearsgroup.co.uk](mailto:enquiries.balmoral@mearsgroup.co.uk)**

KINGSTHORPE  
PARK

A508

A5095

CLARENCE AVE

CECIL RD

EDINBURGH RD

STUDLAND RD

BEMBRIDGE DR

MOTSPUR DR

THORNTON RD

BALMORAL RD

CRANBROOK RD

STANHOPE RD

BALFOUR RD

BALMORAL  
PLACE

BUNTING RD

ARTHUR ST

LYNCROFT WAY

A5095

A508



BALMORAL

PLACE

**MEARS**