



HASLEMERE

Weycombe House

A portrait of fine living

Exclusively for the over 60s: luxury 1 and 2 bedroom apartments
& country club, set in 17 acres of beautiful countryside.

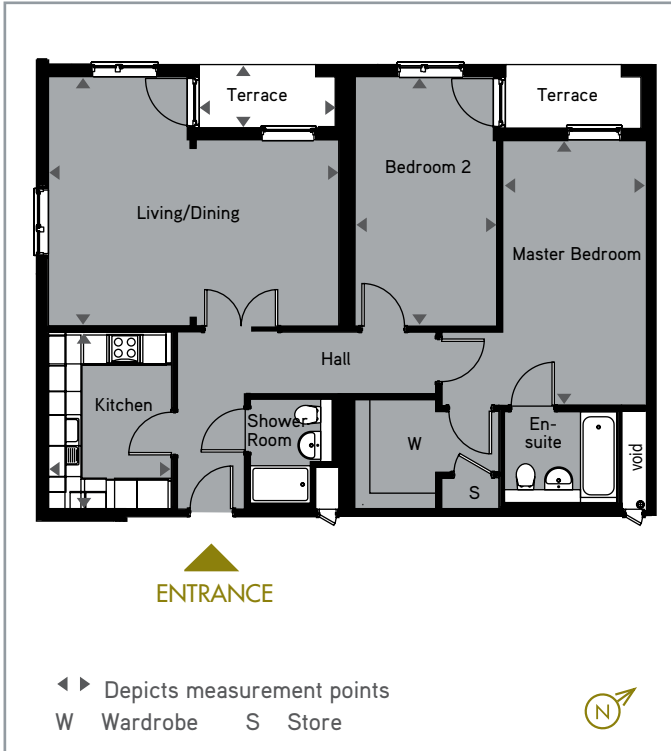

Linden
HOMES

Weycombe House

2 Bedroom Apartment

Apartment Number 2

| | | |
|----------------|--------------------|----------------------|
| Total Area | 89.3m ² | 961.2ft ² |
| Living/Dining | 5500mm x 4800mm | 18' x 15'9" |
| Kitchen | 3400mm x 2350mm | 11'2" x 7'9" |
| Master Bedroom | 5150mm x 2750mm | 16'11" x 9' |
| Bedroom 2 | 4800mm x 2750mm | 15'9" x 9' |
| Terrace | 2600mm x 1220mm | 8'6" x 4' |



General

- Sealed low energy double glazed windows with a powder white finish
- Walnut doors with brushed chrome door furnishings
- Neutral internal decoration
- All living areas and bedrooms are fully carpeted with a choice of finish
- Built-in wardrobes to the master bedroom with a choice of finish
- Centralised district heating system with individual heating interface unit for each property
- Lift access to the upper floor
- Low energy down-lighters throughout
- Each ground floor property has an exclusive outdoor area; patio or garden

Kitchens

- Custom designed and fully fitted modern Symphony kitchen with a high gloss door finish
- Granite worktop and up-stands with stainless steel splash-back, recessed basin with mixer taps
- Stainless steel single integrated AEG electric oven
- Zanussi ceramic electric hob with brushed stainless steel and glass extractor hood
- Built-in stainless steel microwave oven
- Integrated Zanussi fridge, freezer and dishwasher
- Non slip complementing ceramic tiled flooring

Bathrooms and en-suites

- Master en-suite shower cubicle with sliding doors, mixer taps, wash basin and WC
- Neutral Ideal Standard bath with bath and basin Grohe mixers
- Neutral Ideal Standard WC with an integrated push button flushing system
- Non slip complementing ceramic tiled flooring
- Ceramic tiles half height around sanitary ware, full height around shower or bath
- Roman chrome shower screen over the bath
- Heated chrome towel rails and electric shaving socket
- Mirrors fitted to recess

Electrics, communications and security

- TV/FM points in living room, bedrooms (Sky+ HD capability)
- Telephone points in living room and master bedroom
- Smoke and heat detectors

Dwelling efficiency

- Minimum of 75% dedicated energy efficient lighting
- All fitted appliances will achieve a minimum performance A rating
- Designed to meet the Code for Sustainable Homes Level 3
- NHBC warranty

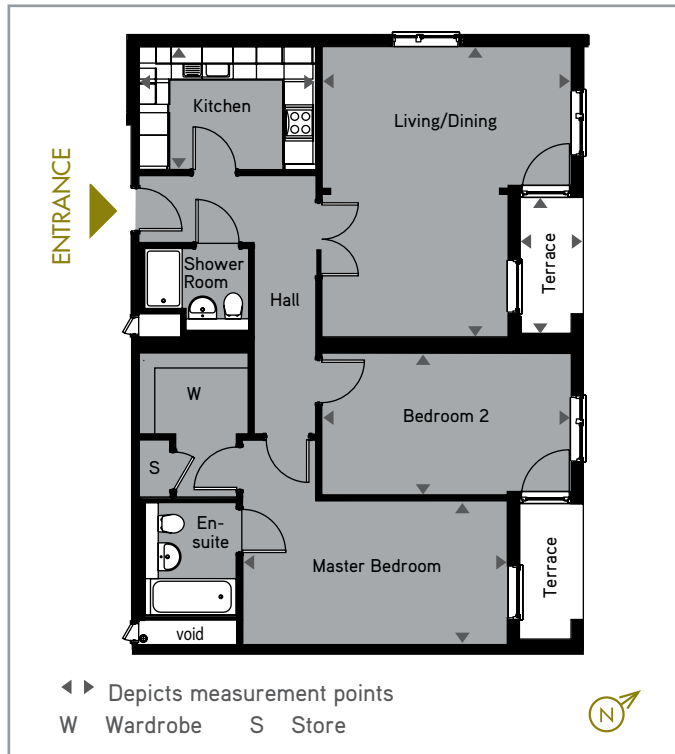


Weycombe House

2 Bedroom Apartment

Apartment Number 6

| | | |
|----------------|--------------------|----------------------|
| Total Area | 89.3m ² | 961.2ft ² |
| Living/Dining | 5500mm x 4800mm | 18' x 15'9" |
| Kitchen | 3400mm x 2350mm | 11'2" x 7'9" |
| Master Bedroom | 5150mm x 2750mm | 16'11" x 9' |
| Bedroom 2 | 4800mm x 2750mm | 15'9" x 9' |
| Terrace | 2600mm x 1220mm | 8'6" x 4' |



General

- Sealed low energy double glazed windows with a powder white finish
- Walnut doors with brushed chrome door furnishings
- Neutral internal decoration
- All living areas and bedrooms are fully carpeted with a choice of finish
- Built-in wardrobes to the master bedroom with a choice of finish
- Centralised district heating system with individual heating interface unit for each property
- Lift access to the upper floor
- Low energy down-lighters throughout
- Each ground floor property has an exclusive outdoor area; patio or garden

Kitchens

- Custom designed and fully fitted modern Symphony kitchen with a high gloss door finish
- Granite worktop and up-stands with stainless steel splash-back, recessed basin with mixer taps
- Stainless steel single integrated AEG electric oven
- Zanussi ceramic electric hob with brushed stainless steel and glass extractor hood
- Built-in stainless steel microwave oven
- Integrated Zanussi fridge, freezer and dishwasher
- Non slip complementing ceramic tiled flooring

Bathrooms and en-suites

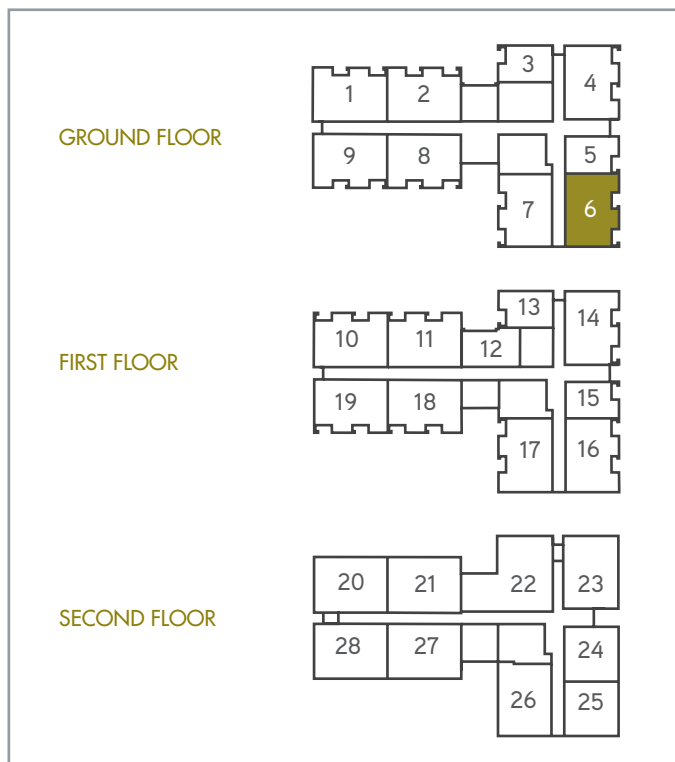
- Master en-suite shower cubicle with sliding doors, mixer taps, wash basin and WC
- Neutral Ideal Standard bath with bath and basin Grohe mixers
- Neutral Ideal Standard WC with an integrated push button flushing system
- Non slip complementing ceramic tiled flooring
- Ceramic tiles half height around sanitary ware, full height around shower or bath
- Roman chrome shower screen over the bath
- Heated chrome towel rails and electric shaving socket
- Mirrors fitted to recess

Electrics, communications and security

- TV/FM points in living room, bedrooms (Sky+ HD capability)
- Telephone points in living room and master bedroom
- Smoke and heat detectors

Dwelling efficiency

- Minimum of 75% dedicated energy efficient lighting
- All fitted appliances will achieve a minimum performance A rating
- Designed to meet the Code for Sustainable Homes Level 3
- NHBC warranty

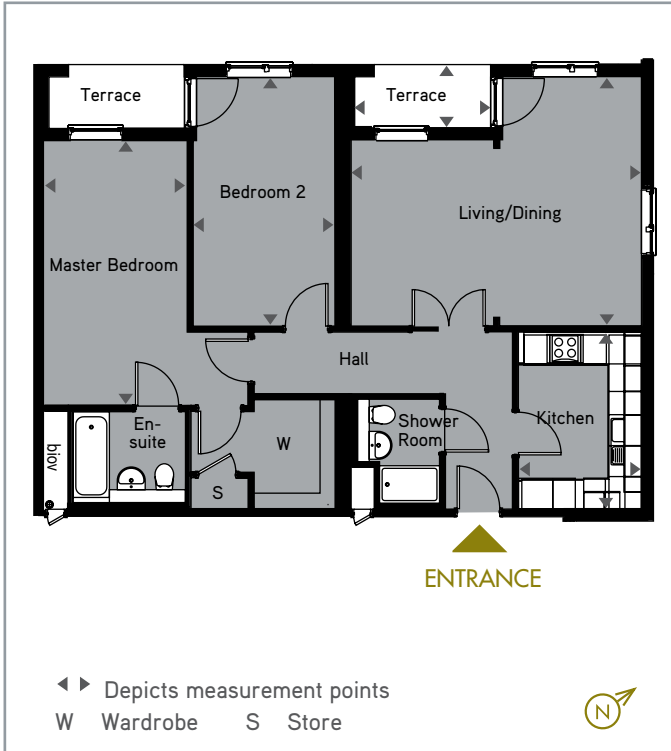


Weycombe House

2 Bedroom Apartment

Apartment Number 11

| | | |
|----------------|--------------------|----------------------|
| Total Area | 89.3m ² | 961.2ft ² |
| Living/Dining | 5500mm x 4800mm | 18' x 15'9" |
| Kitchen | 3400mm x 2350mm | 11'2" x 7'9" |
| Master Bedroom | 5150mm x 2750mm | 16'11" x 9' |
| Bedroom 2 | 4800mm x 2750mm | 15'9" x 9' |
| Terrace | 2600mm x 1220mm | 8'6" x 4' |



General

- Sealed low energy double glazed windows with a powder white finish
- Walnut doors with brushed chrome door furnishings
- Neutral internal decoration
- All living areas and bedrooms are fully carpeted with a choice of finish
- Built-in wardrobes to the master bedroom with a choice of finish
- Centralised district heating system with individual heating interface unit for each property
- Lift access to the upper floor
- Low energy down-lighters throughout
- Each ground floor property has an exclusive outdoor area; patio or garden

Kitchens

- Custom designed and fully fitted modern Symphony kitchen with a high gloss door finish
- Granite worktop and up-stands with stainless steel splash-back, recessed basin with mixer taps
- Stainless steel single integrated AEG electric oven
- Zanussi ceramic electric hob with brushed stainless steel and glass extractor hood
- Built-in stainless steel microwave oven
- Integrated Zanussi fridge, freezer and dishwasher
- Non slip complementing ceramic tiled flooring

Bathrooms and en-suites

- Master en-suite shower cubicle with sliding doors, mixer taps, wash basin and WC
- Neutral Ideal Standard bath with bath and basin Grohe mixers
- Neutral Ideal Standard WC with an integrated push button flushing system
- Non slip complementing ceramic tiled flooring
- Ceramic tiles half height around sanitary ware, full height around shower or bath
- Roman chrome shower screen over the bath
- Heated chrome towel rails and electric shaving socket
- Mirrors fitted to recess

Electrics, communications and security

- TV/FM points in living room, bedrooms (Sky+ HD capability)
- Telephone points in living room and master bedroom
- Smoke and heat detectors

Dwelling efficiency

- Minimum of 75% dedicated energy efficient lighting
- All fitted appliances will achieve a minimum performance A rating
- Designed to meet the Code for Sustainable Homes Level 3
- NHBC warranty

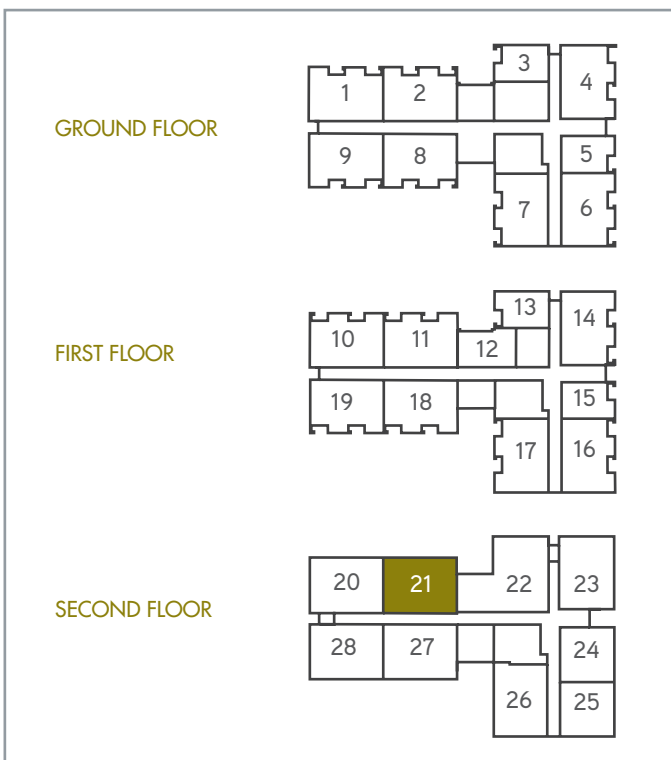
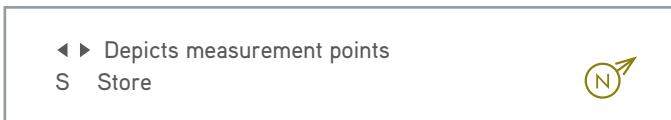
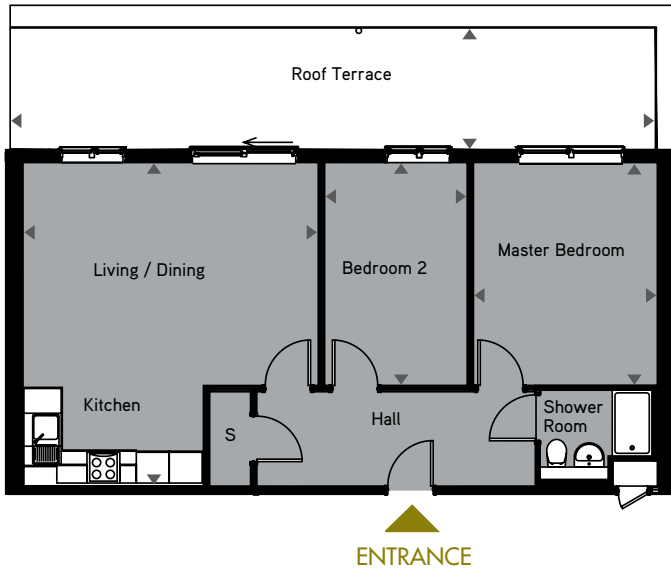


Weycombe House

2 Bedroom Apartment

Apartment Number 21

| | | |
|---------------------------|------------------|----------------------|
| Total Area | 68m ² | 731.9ft ² |
| Living/Dining/ Kitchen | 5850mm x 5350mm | 19'2" x 17'7" |
| Master Bedroom | 4050mm x 3350mm | 13'3" x 11' |
| Bedroom 2 | 4050mm x 2600mm | 13'3" x 8'6" |
| Roof Terrace | 11700mm x 2200mm | 38'5" x 7'3" |



General

- Sealed low energy double glazed windows with a powder white finish
- Walnut doors with brushed chrome door furnishings
- Neutral internal decoration
- All living areas and bedrooms are fully carpeted with a choice of finish
- Built-in wardrobes to the master bedroom with a choice of finish
- Centralised district heating system with individual heating interface unit for each property
- Lift access to the upper floor
- Low energy down-lighters throughout
- Each ground floor property has an exclusive outdoor area; patio or garden

Kitchens

- Custom designed and fully fitted modern Symphony kitchen with a high gloss door finish
- Granite worktop and up-stands with stainless steel splash-back, recessed basin with mixer taps
- Stainless steel single integrated AEG electric oven
- Zanussi ceramic electric hob with brushed stainless steel and glass extractor hood
- Built-in stainless steel microwave oven
- Integrated Zanussi fridge, freezer and dishwasher
- Non slip complementing ceramic tiled flooring

Bathrooms and en-suites

- Master en-suite shower cubicle with sliding doors, mixer taps, wash basin and WC
- Neutral Ideal Standard bath with bath and basin Grohe mixers
- Neutral Ideal Standard WC with an integrated push button flushing system
- Non slip complementing ceramic tiled flooring
- Ceramic tiles half height around sanitary ware, full height around shower or bath
- Roman chrome shower screen over the bath
- Heated chrome towel rails and electric shaving socket
- Mirrors fitted to recess

Electrics, communications and security

- TV/FM points in living room, bedrooms (Sky+ HD capability)
- Telephone points in living room and master bedroom
- Smoke and heat detectors

Dwelling efficiency

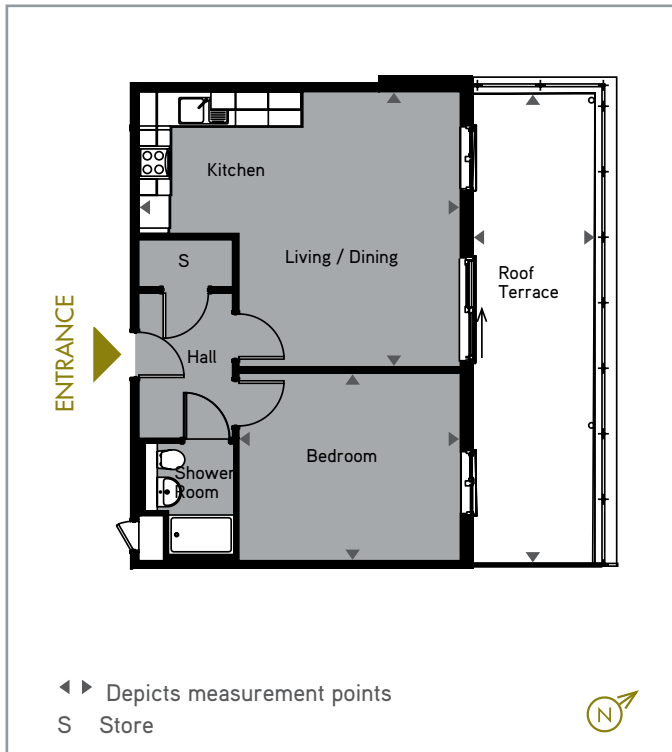
- Minimum of 75% dedicated energy efficient lighting
- All fitted appliances will achieve a minimum performance A rating
- Designed to meet the Code for Sustainable Homes Level 3
- NHBC warranty

Weycombe House

1 Bedroom Apartment

Apartment Number 24

| | | |
|---------------------------|--------------------|----------------------|
| Total Area | 50.5m ² | 543.6ft ² |
| Living/Dining/ Kitchen | 5850mm x 5000mm | 19'2" x 16'5" |
| Bedroom | 4050mm x 3400mm | 13'3" x 11'2" |
| Roof Terrace | 8700mm x 2200mm | 28'7" x 7'3" |



General

- Sealed low energy double glazed windows with a powder white finish
- Walnut doors with brushed chrome door furnishings
- Neutral internal decoration
- All living areas and bedrooms are fully carpeted with a choice of finish
- Built-in wardrobes to the master bedroom with a choice of finish
- Centralised district heating system with individual heating interface unit for each property
- Lift access to the upper floor
- Low energy down-lighters throughout
- Each ground floor property has an exclusive outdoor area; patio or garden

Kitchens

- Custom designed and fully fitted modern Symphony kitchen with a high gloss door finish
- Granite worktop and up-stands with stainless steel splash-back, recessed basin with mixer taps
- Stainless steel single integrated AEG electric oven
- Zanussi ceramic electric hob with brushed stainless steel and glass extractor hood
- Built-in stainless steel microwave oven
- Integrated Zanussi fridge, freezer and dishwasher
- Non slip complementing ceramic tiled flooring

Bathrooms and en-suites

- Master en-suite shower cubicle with sliding doors, mixer taps, wash basin and WC
- Neutral Ideal Standard bath with bath and basin Grohe mixers
- Neutral Ideal Standard WC with an integrated push button flushing system
- Non slip complementing ceramic tiled flooring
- Ceramic tiles half height around sanitary ware, full height around shower or bath
- Roman chrome shower screen over the bath
- Heated chrome towel rails and electric shaving socket
- Mirrors fitted to recess

Electrics, communications and security

- TV/FM points in living room, bedrooms (Sky+ HD capability)
- Telephone points in living room and master bedroom
- Smoke and heat detectors

Dwelling efficiency

- Minimum of 75% dedicated energy efficient lighting
- All fitted appliances will achieve a minimum performance A rating
- Designed to meet the Code for Sustainable Homes Level 3
- NHBC warranty

